

PIATT CASTLES CO., INC.  
 Vol. No. 364 P. 598 (6-8-1976)  
 30-145-00-00-029.000

39.500 Acres  
 - 6.358 Acres  
 -----  
 33.142 Acres

Commercial Area  
 Total: 333,532.60<sup>sq</sup>  
 or  
 7.657 Acres

56,569.585<sup>sq</sup>  
 or  
 1.299 Acres

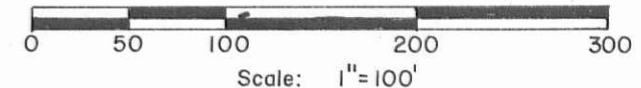
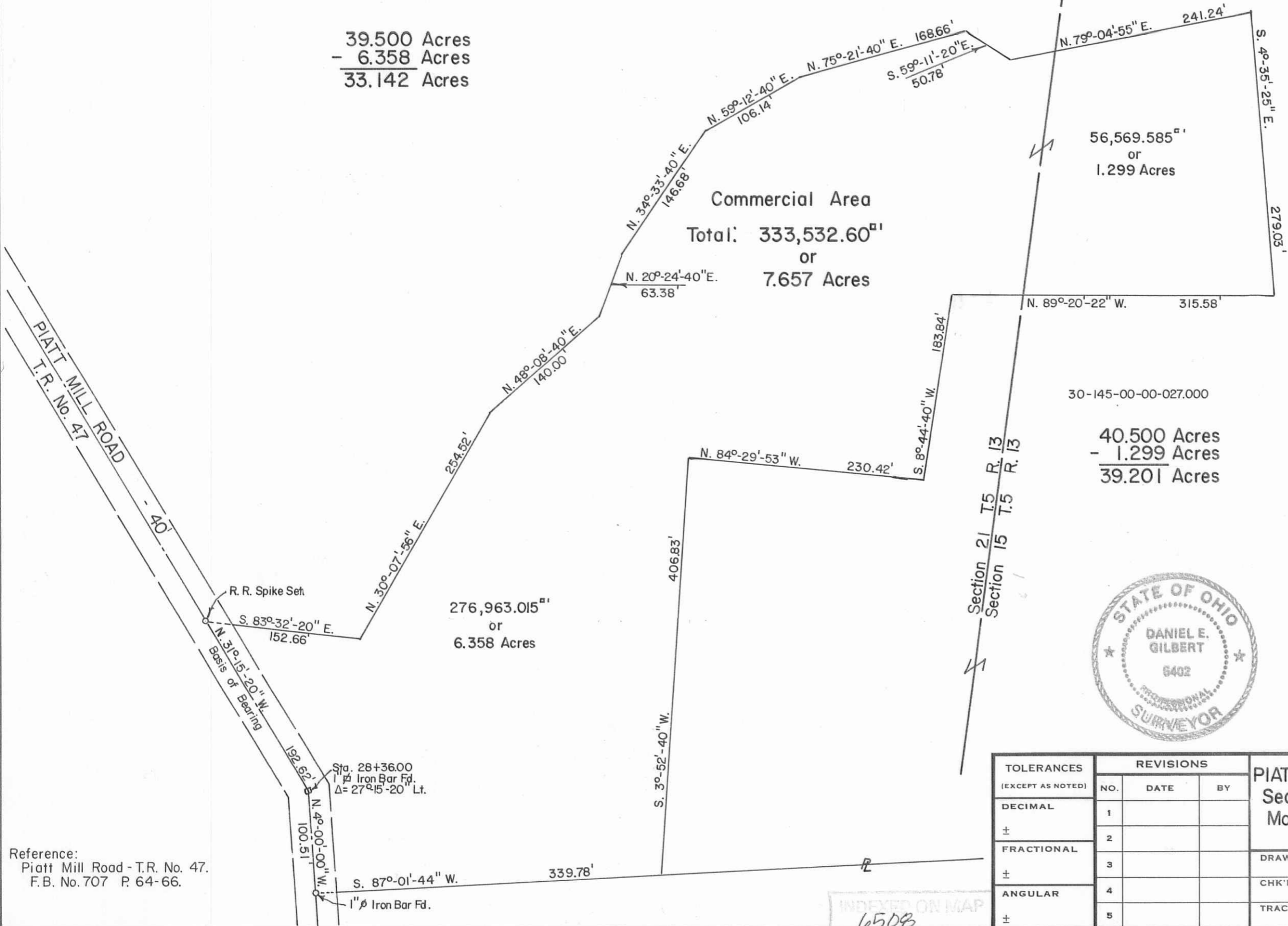
30-145-00-00-027.000

40.500 Acres  
 - 1.299 Acres  
 -----  
 39.201 Acres

276,963.015<sup>sq</sup>  
 or  
 6.358 Acres

PIATT MILL ROAD  
 T.R. No. 47  
 - 40'  
 R.R. Spike Set  
 S. 83°-32'-20" E. 152.66'  
 Basis of Bearing  
 N. 3°-15'-20" W. 192.62'  
 Sta. 28+36.00  
 1" Iron Bar Fd.  
 Δ = 27°-15'-20" Lt.  
 100.51'  
 N. 4°-00'-00" W.  
 S. 87°-01'-44" W. 339.78'  
 1" Iron Bar Fd.

Reference:  
 Piatt Mill Road - T.R. No. 47.  
 F.B. No. 707 P. 64-66.



*Daniel E. Gilbert*  
 DANIEL E. GILBERT, P.S.  
 REG. SUR. NO. 5402  
 400 N. PARK ST.  
 BELLEFONTAINE, OHIO 43311  
 TELEPHONE: 1 (513) 593-1428



INDEXED ON MAP  
 6508

TOLERANCES (EXCEPT AS NOTED)	REVISIONS		
	NO.	DATE	BY
DECIMAL	1		
±	2		
FRACTIONAL	3		
±	4		
ANGULAR	5		
±			

PIATT CASTLES CO., INC.-Commercial Area. Sections No. 15-21, T.5, R.13 B.M.R.S. Monroe Township, Logan County, Ohio.		
DRAWN BY DEG	SCALE 1"=100	MATERIAL As Noted
CHK'D DEG	DATE 12-19-1991	DRAWING NO. 091-054
TRACED DEG	APP'D	

S-765