

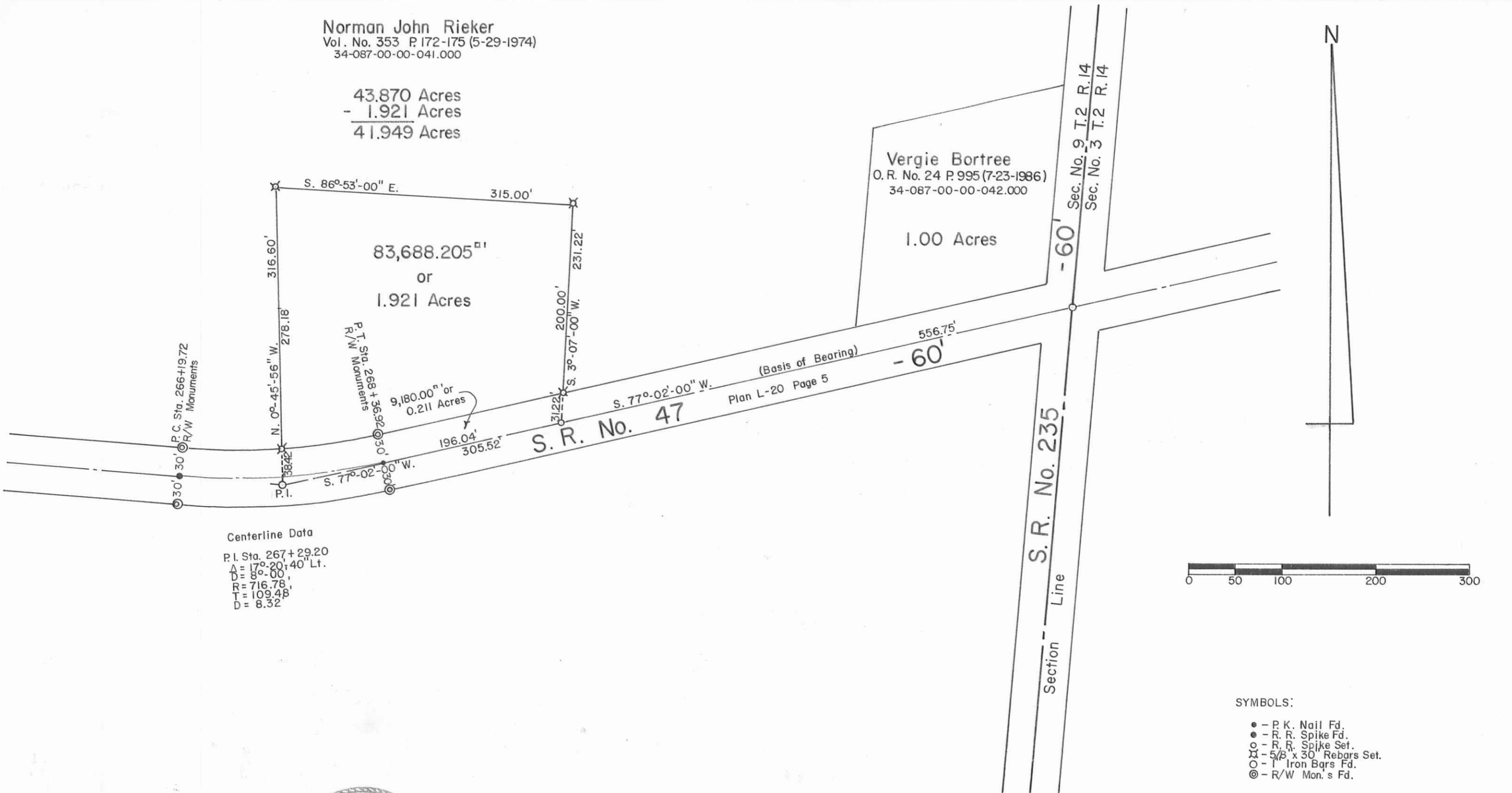
Norman John Rieker
 Vol. No. 353 P. 172-175 (5-29-1974)
 34-087-00-00-041.000

43.870 Acres
 - 1.921 Acres
 41.949 Acres

Vergie Bortree
 O. R. No. 24 P. 995 (7-23-1986)
 34-087-00-00-042.000

1.00 Acres

83,688.205^{sq ft}
 or
 1.921 Acres



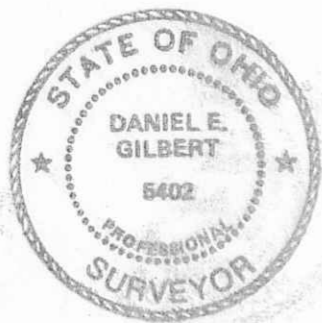
Centerline Data

P.I. Sta. 267+29.20
 Δ = 17°-20'-40" Lt.
 D = 8°-00'
 R = 716.78'
 T = 109.48'
 D = 8.32'

SYMBOLS:

- - P. K. Nail Fd.
- - R. R. Spike Fd.
- - R. R. Spike Set.
- ⊗ - 5/8" x 30" Rebars Set.
- - 1" Iron Bars Fd.
- ⊙ - R/W Mon. s Fd.

Daniel E. Gilbert
 DANIEL E. GILBERT, P.S.
 REG. SUR. NO. 5402
 400 N. PARK ST.
 BELLEFONTAINE, OHIO 43311
 TELEPHONE: 1 (513) 593-1428



INDEXED ON MAP
 8695

TOLERANCES (EXCEPT AS NOTED)	REVISIONS			Rieker to Davis Survey Section No. 9 T.2 R.14 BMRS Pleasant Township Logan County, Ohio		
	NO.	DATE	BY			
DECIMAL	1			DRAWN BY DEG	SCALE 1" = 100'	MATERIAL As Noted
±	2					
FRACTIONAL	3			CHK'D DEG	DATE 5-20-1992	DRAWING NO. 092-024
±	4					
ANGULAR	5			TRACED DEG	APP'D	
±						

S-779