

ELIZABETH STREET - 60'

N. 39°-13' E.

389.95'

1" Iron Bar Fd.
F. B. 708 P. 61.

P. K. Nail Fd.

101.00' 64.00' 32.50' 64.00'

89°-47'

89°-47'

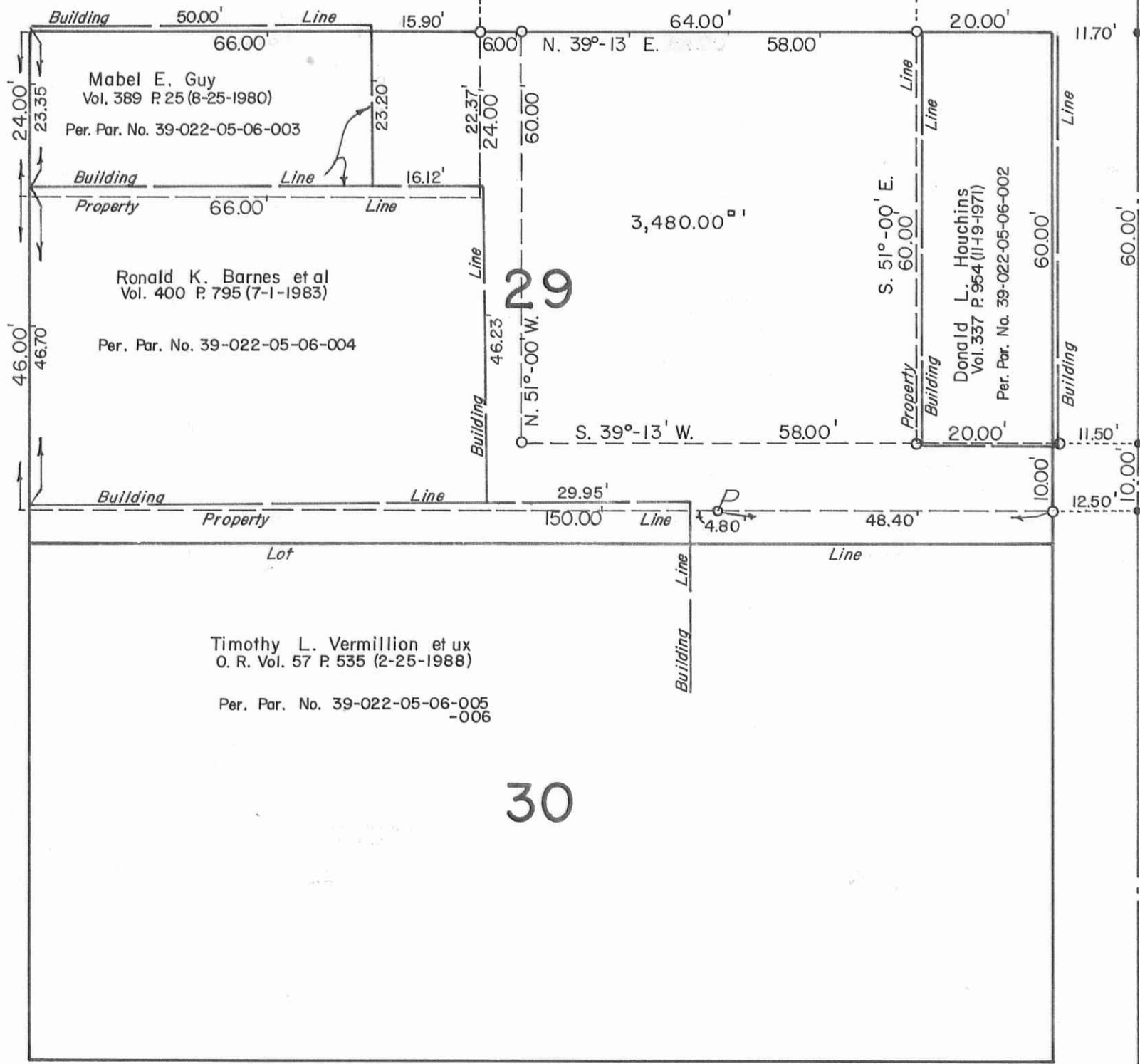
89°-47'

89°-47'

MAIN STREET - 70'

N. 51°-00' W.

Basis of Bearing



R. K. BARNES SURVEY
 Subdivision of Lot No. 29
 Village of Belle Center
 Richland Township
 Logan County, Ohio
 June 8, 1989

Scale: 1" = 20'

ALLEY

25'

20' ALLEY

- - P. K. Nails Set.
- - 5/8" x 30" Rebars Set.



Daniel E. Gilbert
 Daniel E. Gilbert, P.S.
 Reg. Sur. No. 5402
 400 N. Park St.
 Bellefontaine, Ohio 43311

S-803 089-028

INDEXED ON MAP
7918