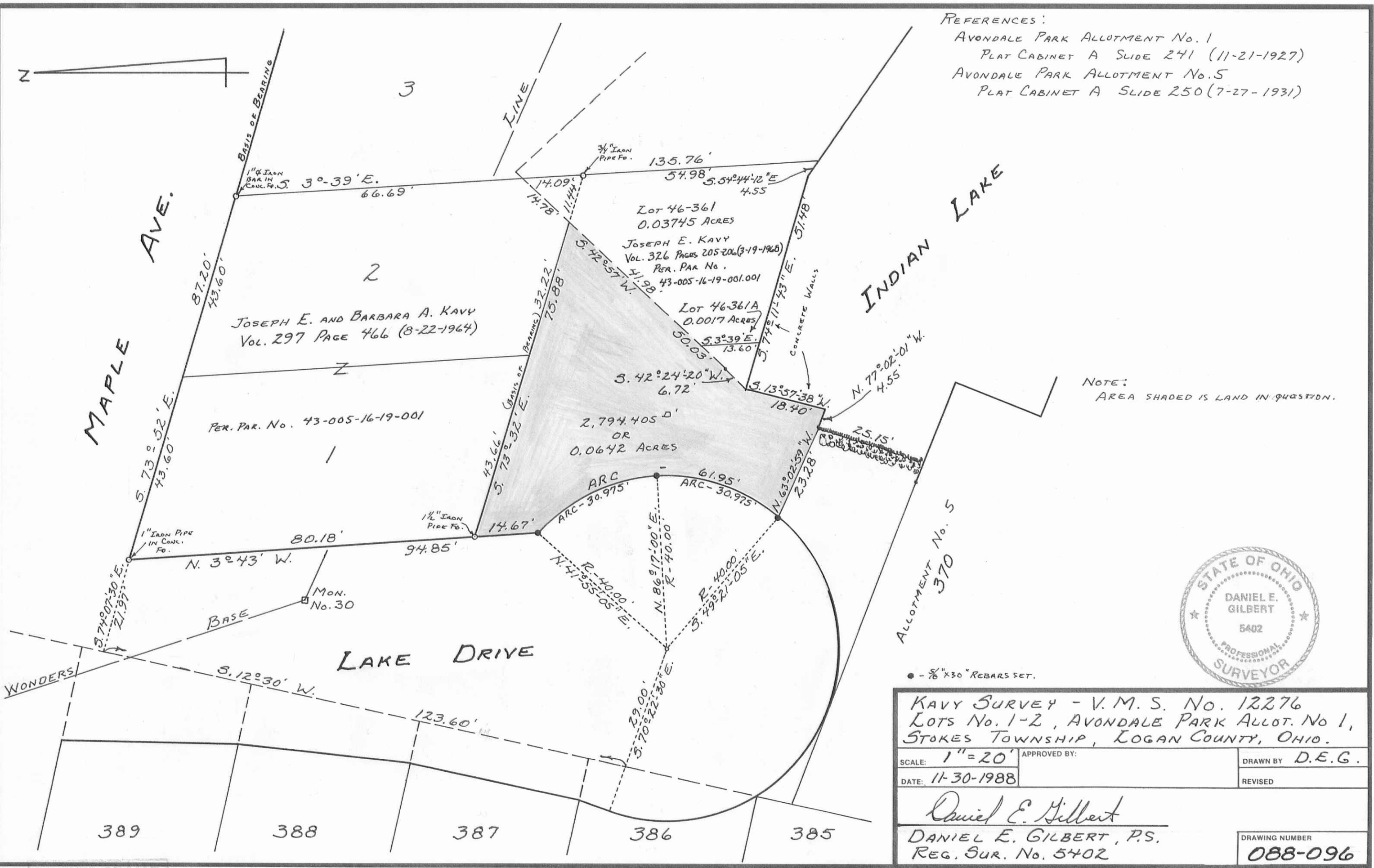


REFERENCES:
 AVONDALE PARK ALLOTMENT No. 1
 PLAT CABINET A SLIDE 241 (11-21-1927)
 AVONDALE PARK ALLOTMENT No. 5
 PLAT CABINET A SLIDE 250 (7-27-1931)



NOTE:
 AREA SHADED IS LAND IN QUESTION.



• - 5/8" x 30" REBARS SET.

| | |
|--|------------------|
| KAVY SURVEY - V. M. S. No. 12276 | |
| LOTS No. 1-2, AVONDALE PARK ALLOT. No. 1, STOKES TOWNSHIP, LOGAN COUNTY, OHIO. | |
| SCALE: 1" = 20' | APPROVED BY: |
| DATE: 11-30-1988 | DRAWN BY: D.E.G. |
| REVISER: | |
| <i>Daniel E. Gilbert</i> DANIEL E. GILBERT, P.S. REG. SUR. No. 5402 | |
| DRAWING NUMBER: 088-096 | |

INDEXED ON MAP
 7242

S-829