

Don F. Shuler  
 O.R. No. 202 P. 151 (9-15-1993)  
 43-019-09-01-012.000  
 Lot No. 1 part.

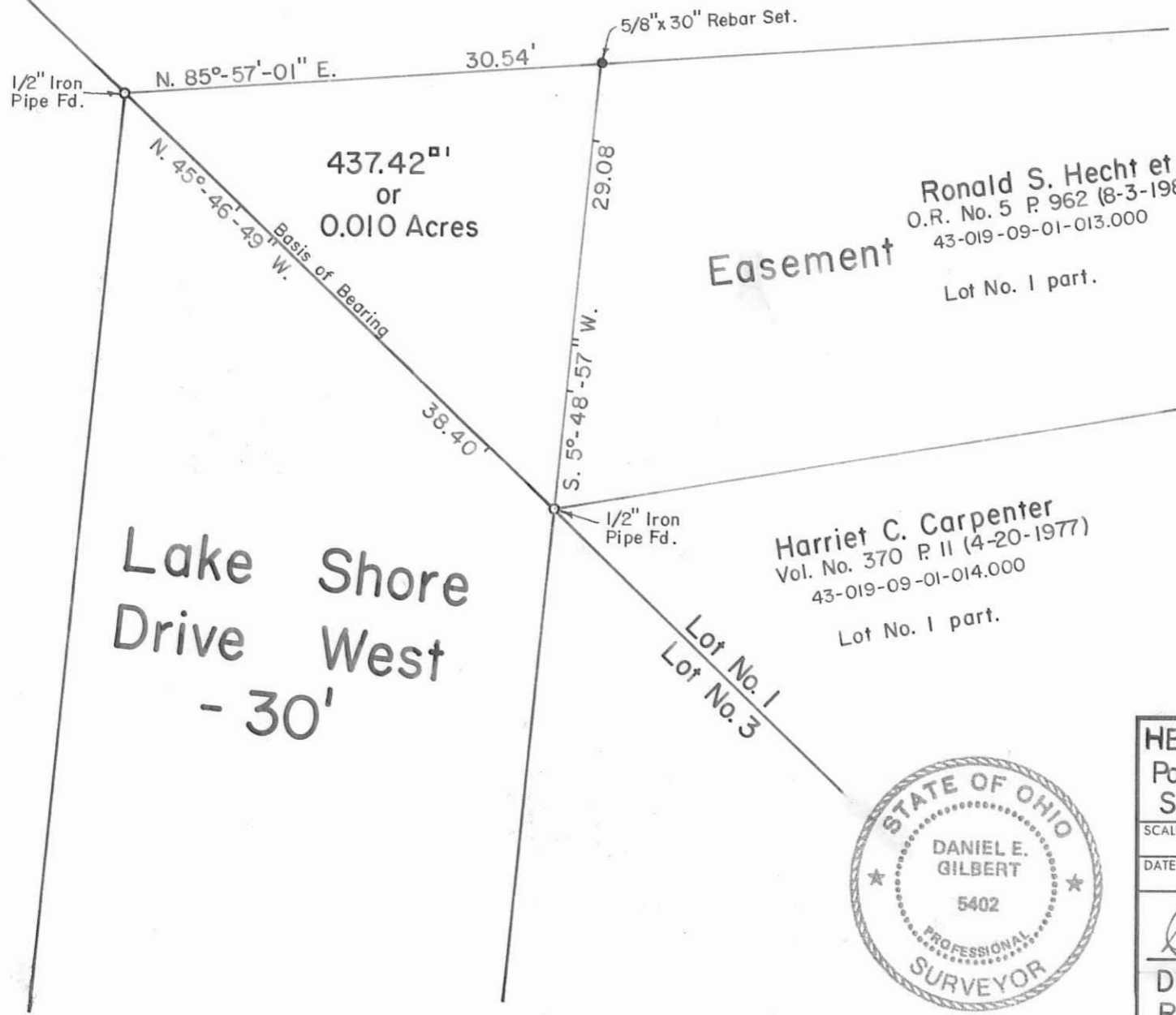
Don Shuler  
 Vol. No. 400 P. 961 (10-5-1983)  
 43-019-09-01-011.000  
 Lot No. 2 part.

Ronald S. Hecht et ux  
 O.R. No. 5 P. 962 (8-3-1985)  
 43-019-09-01-013.000  
 Lot No. 1 part.

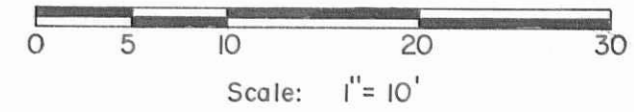
Harriet C. Carpenter  
 Vol. No. 370 P. 11 (4-20-1977)  
 43-019-09-01-014.000  
 Lot No. 1 part.

Lake Shore  
 Drive West  
 - 30'

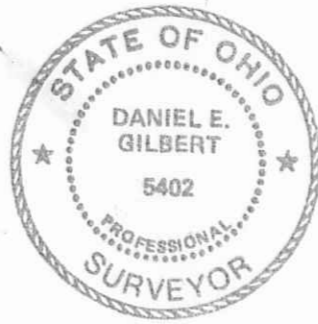
Easement



N



INDEXED ON MAP  
 2092



HECHT, et al To Stokes Township Trustees- V.M.S. No. 12276, Part of Lot No. 1, Shawnee Island Allotment, Shawnee Island, Stokes Township, Logan County, Ohio.		
SCALE: 1" = 10'	APPROVED BY:	DRAWN BY DEG
DATE: 4-21-1995		REVISED
<i>Daniel E. Gilbert</i> Daniel E. Gilbert, P.S. Reg. Sur. No. 5402		DRAWING NUMBER 095-019

S-830