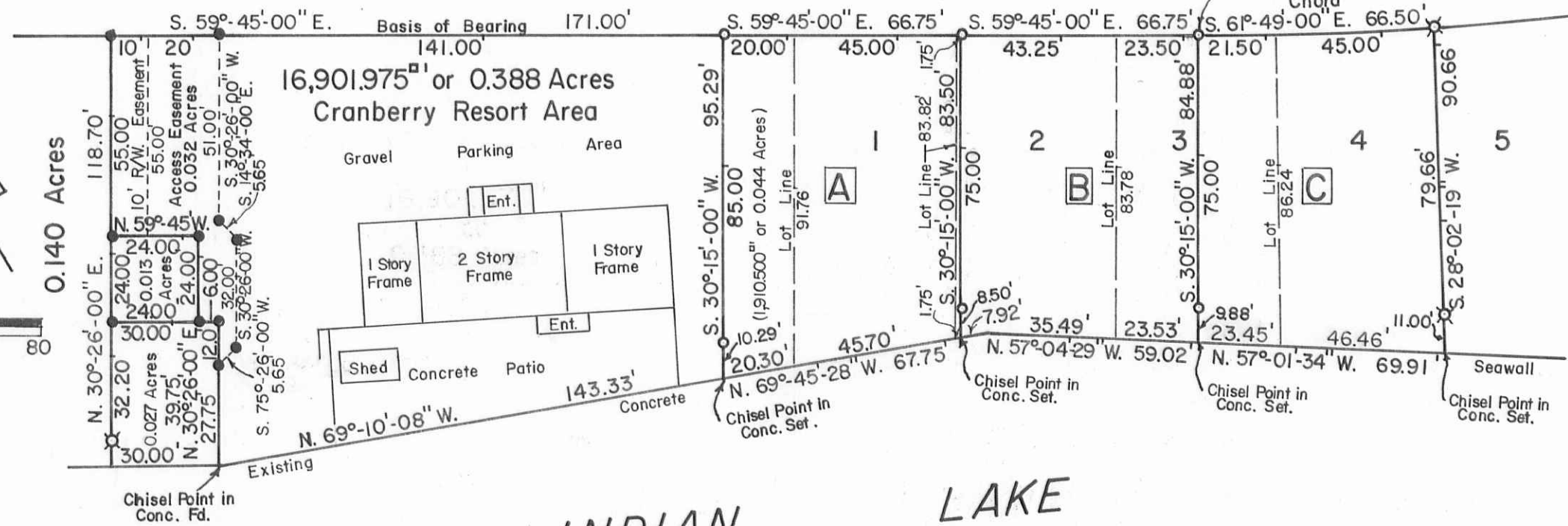
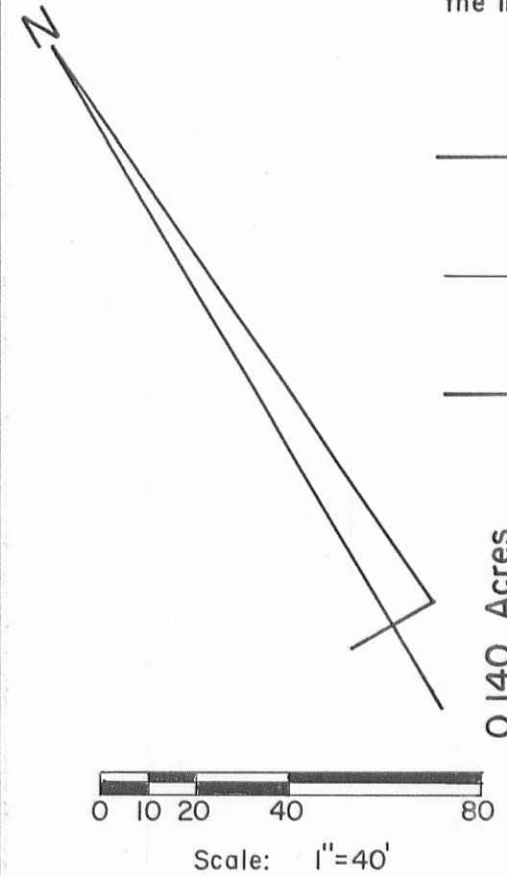


To whom it may concern:  
I hereby certify to AmeriCom Bank, Lima, that on June 13, 1996, I did locate the improvements as shown on this plat and that are no encroachments.

*Daniel E. Gilbert*  
Daniel E. Gilbert, P.S.  
Reg. Sur. No. 5402  
Bellefontaine, Ohio 43311

S. R. No. 368

Plan L-28 Page 3 (1934)  
S. H. No. 622 Section C



INDIAN LAKE

- Par. No. 43-018-12-11-012.000 Lots No. 5-6pt.  
Robert Erwin etux O. R. No. 57 P. 473 (2-16-1988)
- Par. No. 43-018-12-11-017.000 0.027 Acres.  
Anthony A. Dinovo etal  
Vol. No. 400 P. 492 (6-7-1983).  
O. R. No. 22 P. 15 (6-16-1986).
- Par. No. 43-018-12-11-017.001 0.013 Acres.  
United Telephone Co.  
Vol. No. 398 P. 161 (11-19-1982)
- Par. No. 43-018-12-11-018.000 0.140 Acres.  
Jack B. Snider etux  
O. R. No. 42 P. 128 (4-28-1987).

Reference Deeds:  
Mary Ellen Conley etal  
O. R. No. 128 P. 698 (5-28-1991).  
O. R. No. 128 P. 701 (5-28-1991).  
Lots No. 1, 2, 3 & 4 Mahan Allotment.  
0.410 Acres - V.M.S. No. 12276.

- SYMBOLS:
- o - P. K. Nails Set.
  - ⊗ - 3/4" Iron Pipes Fd.
  - - 5/8" Rebars Fd.
  - - 5/8" x 30" Rebars Set.

Reference Plat:  
Mahan Allotment.  
Plat Cab. A Slide 281 (8-23-1949).

AREAS IN TRACTS:

Tract No. A:	Total Acreage - 5,966.760 <sup>sq</sup> ft. or 0.137 Acres.
	V.M.S. No. 12776 - 1,910.500 <sup>sq</sup> ft. or 0.044 Acres.
	Lot No. 1 - 3,950.300 <sup>sq</sup> ft. or 0.091 Acres.
	Lot No. 2 part - 105.760 <sup>sq</sup> ft. or 0.002 Acres.
Tract No. B:	Total Acreage - 5,568.585 <sup>sq</sup> ft. or 0.128 Acres.
	Lot No. 2 part - 3,586.830 <sup>sq</sup> ft. or 0.083 Acres.
	Lot No. 3 part - 1,981.755 <sup>sq</sup> ft. or 0.045 Acres.
Tract No. C:	Total Acreage - 5,978.315 <sup>sq</sup> ft. or 0.137 Acres.
	Lot No. 3 part - 1,922.961 <sup>sq</sup> ft. or 0.044 Acres.
	Lot No. 4 - 4,055.354 <sup>sq</sup> ft. or 0.093 Acres.

INDEXED ON MAP  
4280



**CRANBERRY RESORT AREA SURVEY-MAHAN ALLOTMENT.**  
V. M.S. No. 12276, Seminole Island,  
Stokes Township, Logan County, Ohio.

SCALE: 1" = 40'	APPROVED BY:	DRAWN BY: DEG
DATE: 5-21-1993		REVISED: 6-13-1996
<i>Daniel E. Gilbert</i> Daniel E. Gilbert, P.S. Reg. Sur. No. 5402.		DRAWING NUMBER: 093-023

S-038