

Ronald C. Barnes et al
 O.R. No. 54 P. 519 (12-7-1987)
 Per. Par. No. 43-005-15-01-001.000

14.53 Acres

S. 89°-17'-55" E. 199.97'
 140.42'

Tract C
 23,334.87^{sq} ft
 or
 0.536 Acres

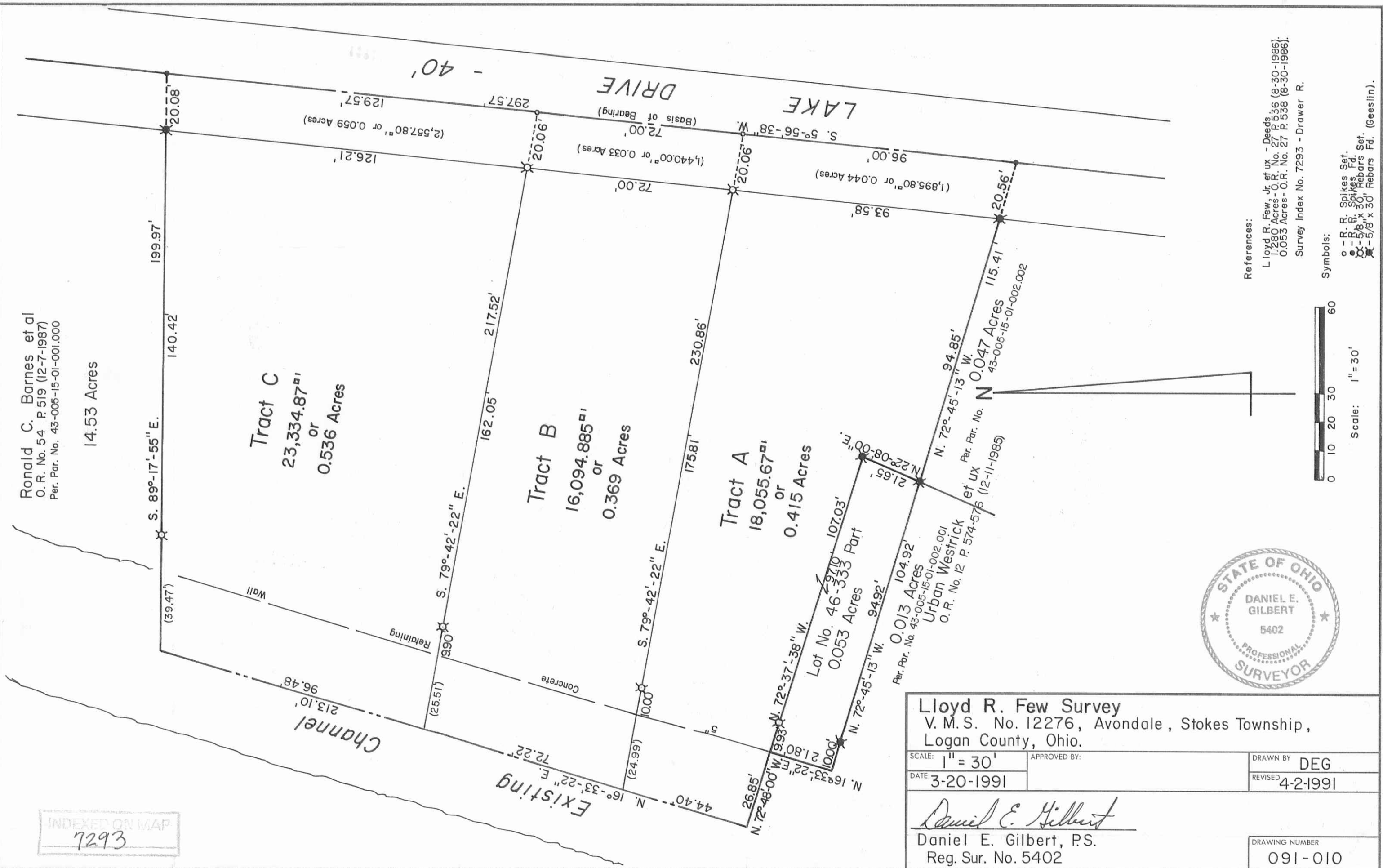
Tract B
 16,094.885^{sq} ft
 or
 0.369 Acres

Tract A
 18,055.67^{sq} ft
 or
 0.415 Acres

Lot No. 46-333 Part
 0.053 Acres

Per. Par. No. 43-005-15-01-002.001
 Urban Westrick
 O.R. No. 12 P. 574-576 (12-11-1985)

Per. Par. No. 43-005-15-01-002.002
 N 0.047 Acres



INDEXED ON MAP
 7293



Lloyd R. Few Survey
 V. M. S. No. 12276, Avondale, Stokes Township,
 Logan County, Ohio.

SCALE: 1" = 30'	APPROVED BY:	DRAWN BY: DEG
DATE: 3-20-1991		REVISED: 4-2-1991

Daniel E. Gilbert
 Daniel E. Gilbert, P.S.
 Reg. Sur. No. 5402

DRAWING NUMBER
 091-010

S-850

References:
 Lloyd R. Few, Jr et ux - Deeds
 1,280 Acres - O.R. No. 27 P. 536 (8-30-1886)
 0.053 Acres - O.R. No. 27 P. 538 (8-30-1886)
 Survey Index No. 7293 - Drawer R.

Scale: 1" = 30'
 0 10 20 30 40 50 60
 Symbols:
 o - R. B. Spikes Set.
 x - 5/8" x 30" Rebars Set.
 □ - 5/8" x 30" Rebars Fd. (Geeslin).