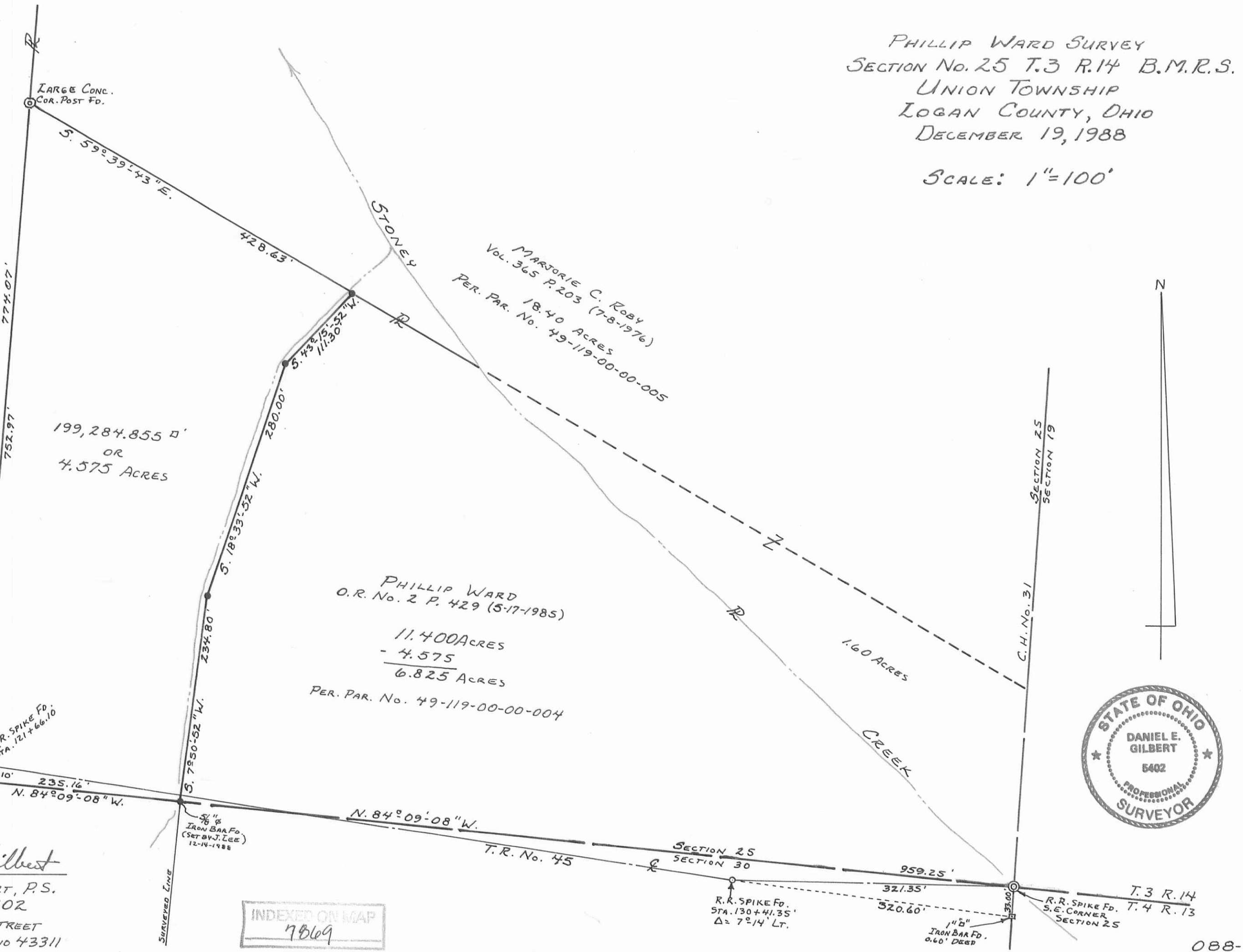


PHILLIP WARD SURVEY
 SECTION No. 25 T.3 R.14 B.M.R.S.
 UNION TOWNSHIP
 LOGAN COUNTY, OHIO
 DECEMBER 19, 1988

698-S

SCALE: 1"=100'



199,284.855 \square '
 OR
 4.575 ACRES

MARJORIE C. ROBY
 Vol. 365 P. 203 (7-8-1976)
 18.40 ACRES
 PER. PAR. No. 49-119-00-00-005

PHILLIP WARD
 O.R. No. 2 P. 429 (5-17-1985)
 11.400 ACRES
 - 4.575
 6.825 ACRES
 PER. PAR. No. 49-119-00-00-004

1.60 ACRES



INDEXED ON MAP
 7869