

Donald E. King et ux
 O.R. No. 81 P 299 (2-24-1989)
 50-134-00-00-006.000

41.520 Acres

Sta. No. 26+87.00
 Iron Bar Rd. Deep
 Set P.K. Nail by
 using Straddles.
 F.B. No. 574 P. 47.

C.H. No. 18

Section No. 11

Town 4

Range 13

BMRS

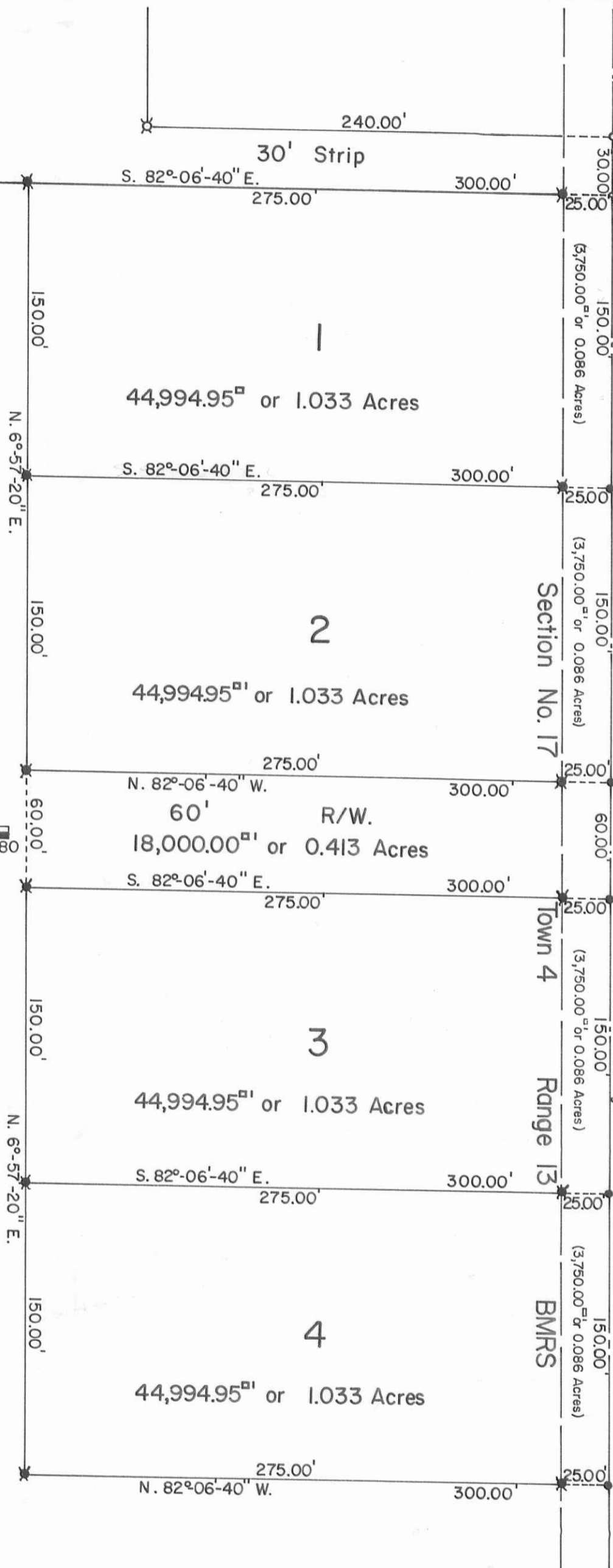
50' R/W

Section No. 17

Town 4

Range 13

BMRS



Scale: 1" = 60'



SYMBOLS:
 o - R. R. Spike Fd.
 o - R. R. Spikes Set.
 o - 5/8" Rebar Fd.
 o - 5/8" x 30" Rebars Set.

Note:
 Lots 3 and 4 not staked due to field cultivation.

John A. and Elizabeth J. Marshall
 O.R. No. 99 P 668-669 (1-2-1990)
 50-134-00-00-024.000

East Half of Southeast Quarter

85.360 Acres

INDEXED ON MAP
 5694

MARSHALL SURVEYS, Lots No. 1 through 4,
 Section No. 17 Town 4 Range 13 BMRS,
 Union Township, Logan County, Ohio.

APPROVED BY: *Daniel E. Gilbert*
 Daniel E. Gilbert, P.S.
 Reg. Sur. No. 5402

SCALE: 1" = 60'
 DATE: 5-19-1993

DRAWN BY: DEG
 REVISED:

DRAWING NUMBER
 093-025