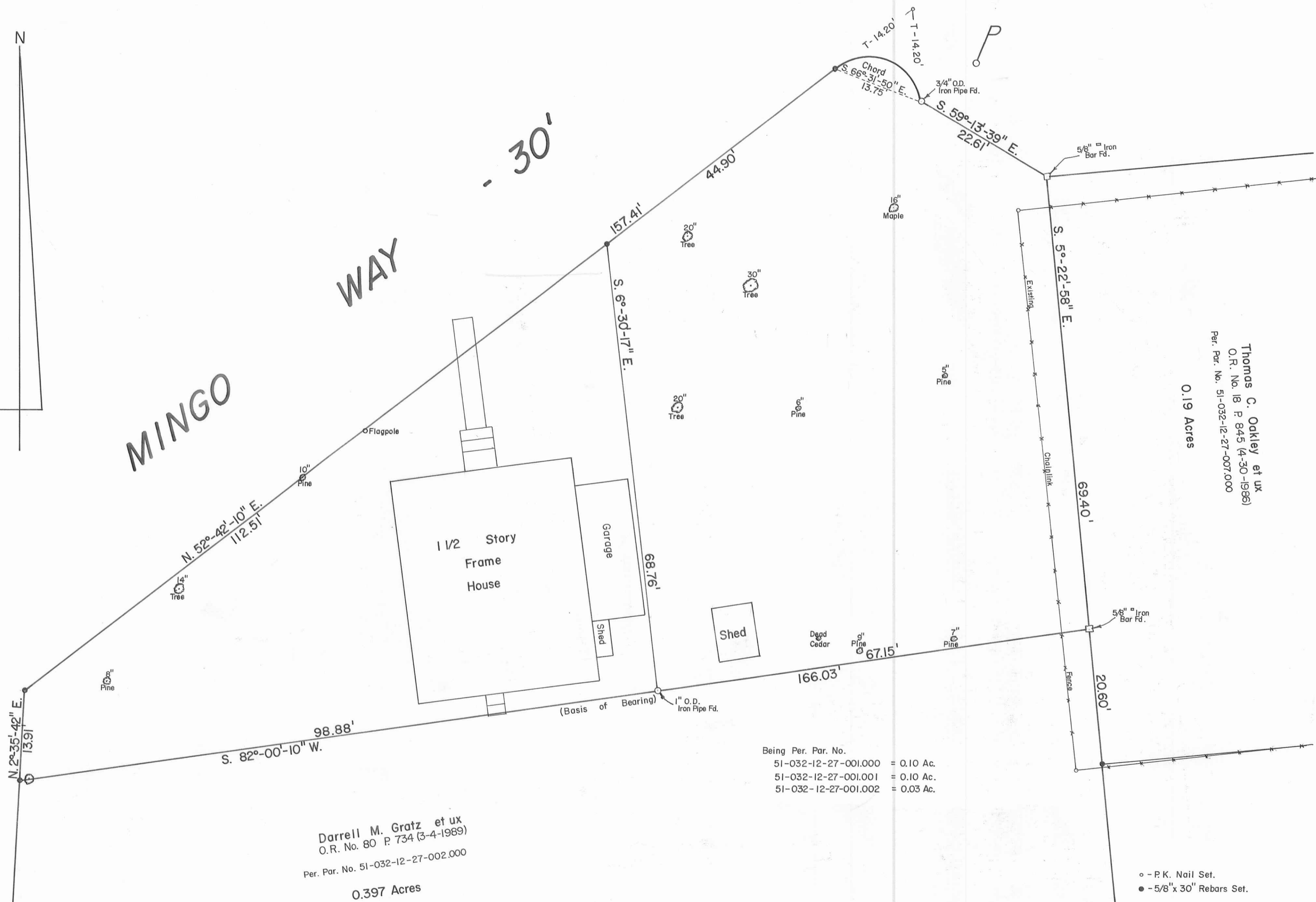


MINGO WAY



Thomas C. Oakley et ux
O.R. No. 18 P. 845 (4-30-1986)
Per. Par. No. 51-032-12-27-007.000
0.19 Acres

Darrell M. Gratz et ux
O.R. No. 80 P. 734 (3-4-1989)
Per. Par. No. 51-032-12-27-002.000
0.397 Acres

Being Per. Par. No.
51-032-12-27-001.000 = 0.10 Ac.
51-032-12-27-001.001 = 0.10 Ac.
51-032-12-27-001.002 = 0.03 Ac.

o - P.K. Nail Set.
● - 5/8" x 30" Rebars Set.



McGovern Survey V.M.S. No. 9925-9946-10121,
Waterbury Area, Washington Township,
Logan County, Ohio.

SCALE: 1" = 10'	APPROVED BY:	DRAWN BY: DEG
DATE: 2-21-1990		REVISED:

Daniel E. Gilbert
Daniel E. Gilbert, P.S.
Reg. Sur. No. 5402

DRAWING NUMBER	090-012
----------------	---------

INDEXED ON MAP
4687

5-880