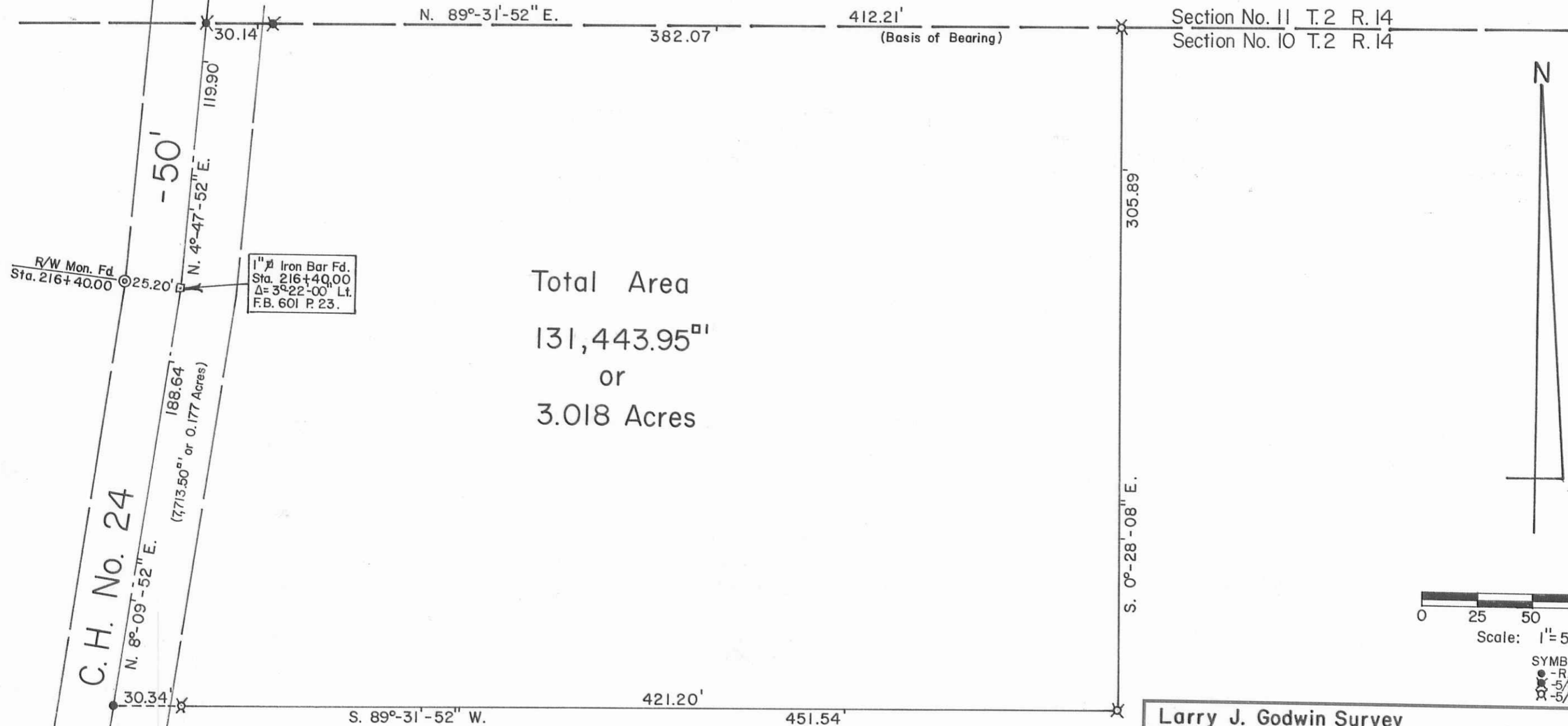


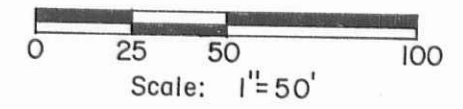
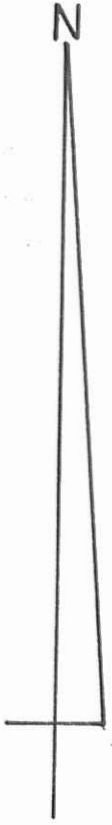
James H. Ellis
 Vol. 318 P. 629 (2-14-1968)
 51-073-00-00-060.000

68.70 Acres



Total Area
 131,443.95^{sq}
 or
 3.018 Acres

Section No. 11 T.2 R.14
 Section No. 10 T.2 R.14



SYMBOLS:
 ● - R.R. Spike Set.
 ✕ - 5/8" x 30" Rebars Fd.
 ✕ - 5/8" x 30" Rebars Set.

C.H. No. 24

1" Iron Bar Fd.
 Sta. 216+40.00
 Δ= 3°-22'-00" Lt.
 F.B. 601 P. 23.

R/W Mon. Fd.
 Sta. 216+40.00

Larry J. Godwin et ux
 Vol. 378 P. 588 (8-18-1978)
 51-087-00-00-004.000

101.030 Acres
 - 3.018
 98.012 Acres

INDEXED ON MAP
 7691



Larry J. Godwin Survey Section No. 10, T.2, R.14, B.M.R.S. Washington Township, Logan County, Ohio.		
SCALE: 1" = 50'	APPROVED BY:	DRAWN BY DEG
DATE: 5-8-1991		REVISED
<i>Daniel E. Gilbert</i> Daniel E. Gilbert, P.S. Reg. Sur. No. 5402		DRAWING NUMBER 091-021

S-801