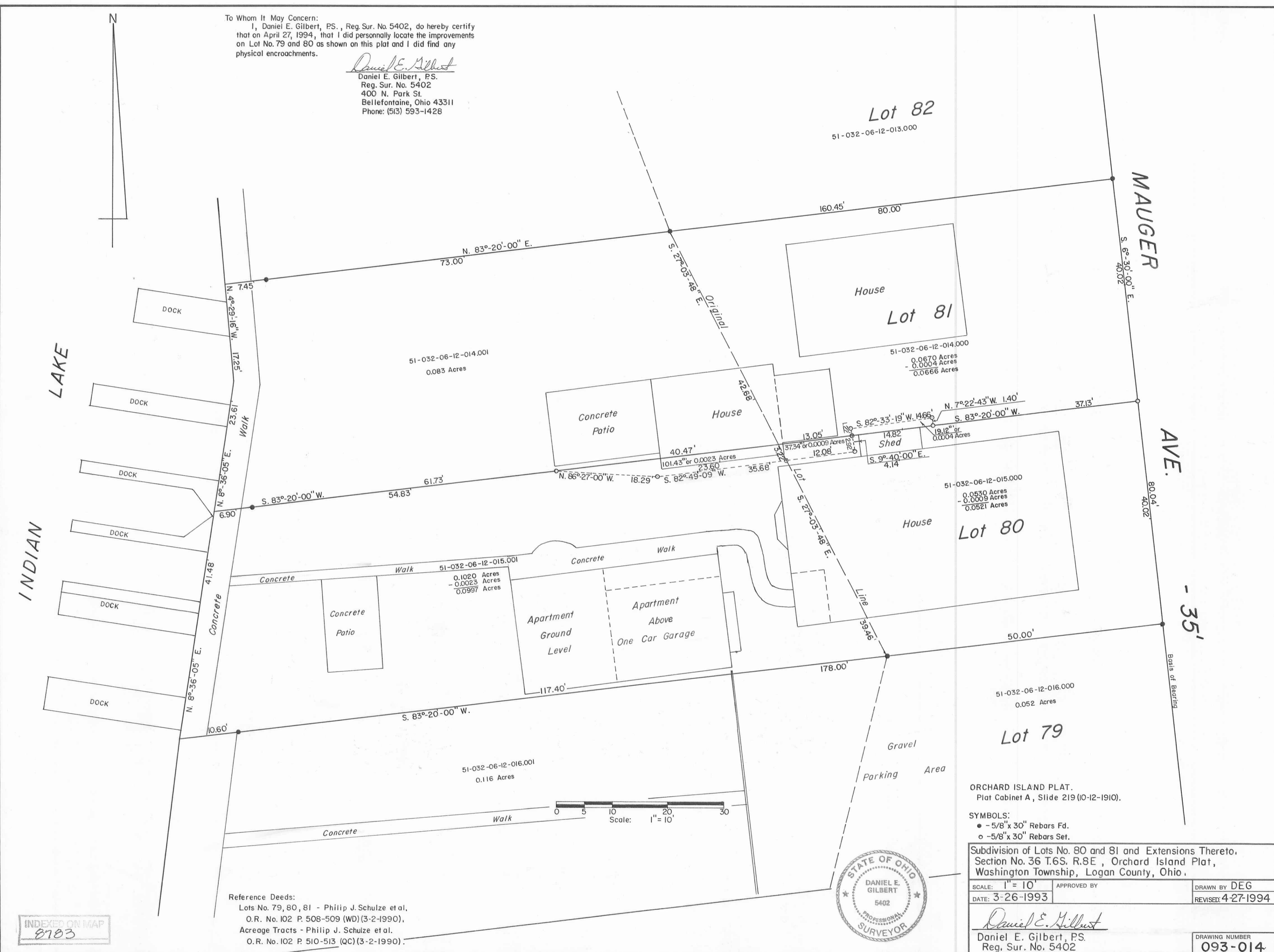
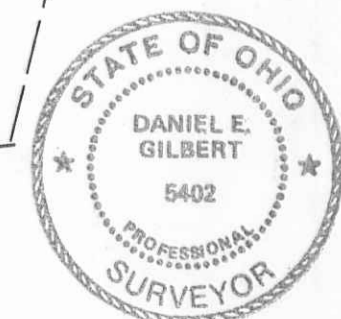


To Whom It May Concern:
 I, Daniel E. Gilbert, P.S., Reg. Sur. No. 5402, do hereby certify that on April 27, 1994, that I did personally locate the improvements on Lot No. 79 and 80 as shown on this plat and I did find any physical encroachments.

Daniel E. Gilbert
 Daniel E. Gilbert, P.S.
 Reg. Sur. No. 5402
 400 N. Park St.
 Bellefontaine, Ohio 43311
 Phone: (513) 593-1428



Reference Deeds:
 Lots No. 79, 80, 81 - Philip J. Schulze et al.
 O.R. No. 102 P. 508-509 (WD) (3-2-1990),
 Acreage Tracts - Philip J. Schulze et al.
 O.R. No. 102 P. 510-513 (QC) (3-2-1990).



ORCHARD ISLAND PLAT.
 Plat Cabinet A, Slide 219 (10-12-1910).

SYMBOLS:
 ● - 5/8" x 30" Rebars Fd.
 ○ - 5/8" x 30" Rebars Set.

Subdivision of Lots No. 80 and 81 and Extensions Thereto,
 Section No. 36 T.6S. R.8E, Orchard Island Plat,
 Washington Township, Logan County, Ohio.

SCALE: 1" = 10'	APPROVED BY	DRAWN BY DEG
DATE: 3-26-1993		REVISED: 4-27-1994

Daniel E. Gilbert
 Daniel E. Gilbert, P.S.
 Reg. Sur. No. 5402

DRAWING NUMBER
093-014

INDEXED ON MAP
 8783

S-885