

Chester A. Alspaugh et ux
Vol. No. 199 P 392 (2-7-1950)
40-066-00-00-028.000

89.618 Acres

Douglas L. Thompson
et ux
O.R. No. 136 P 941 (9-20-1991)
40-066-00-00-028.001

1.060 Acres

Jeffery Lynn Kerns
et al
O.R. No. 181 P 701 (2-12-1993)
40-066-00-00-028.004

1.365 Acres

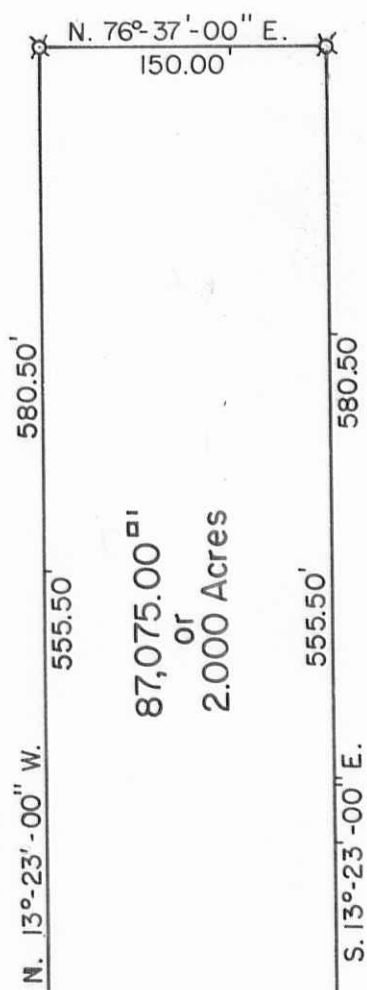
Michael B. Stolly
et al
O.R. No. 181 P 779 (2-12-1993)
40-066-00-00-028.003

1.647 Acres

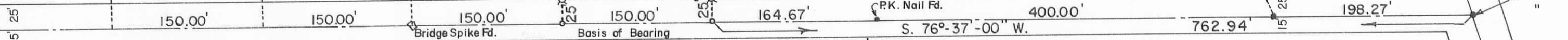
C.H. No. 5
60'

Carol D. Shields
Vol. No. 377 P 476 (7-11-1978)
40-066-00-00-018.000
0.918 Acres

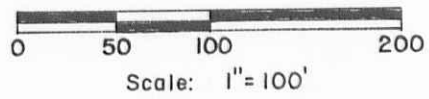
Richard T. Shoffner et ux
Vol. No. 382 P 12 (3-9-1979)
40-066-00-00-019.000
0.918 Acres



In Road, R/W.
3,750.00 sq ft or
0.086 Acres

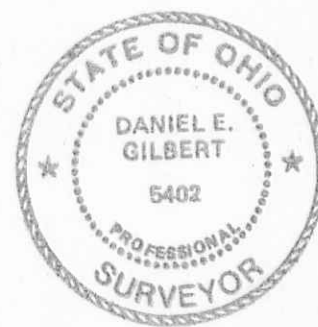


R. R. Spike Fd. at
Sta. No. 34+03 (C. H. No. 5).
F.B. No. 588 P. 68.
= Sta. No. 0+00 (T.R. No. 136).
F.B. No. 588 P. 30.



SYMBOLS
● - R. R. Spikes Fd.
○ - R. R. Spikes Set.
X - 5/8" x 30" Rebars Set.

INDEXED ON MAP
5175



ALSPAUGH to SHIELDS SURVEY
V.M.S. No. 3323, Rushcreek Township,
Logan County, Ohio.

SCALE: 1"=100'	APPROVED BY:	DRAWN BY: DEG
DATE: 7-11-1994		REVISED:

Daniel E. Gilbert
Daniel E. Gilbert, P.S.
Reg. Sur. No. 5402

DRAWING NUMBER
094-042

S-900