

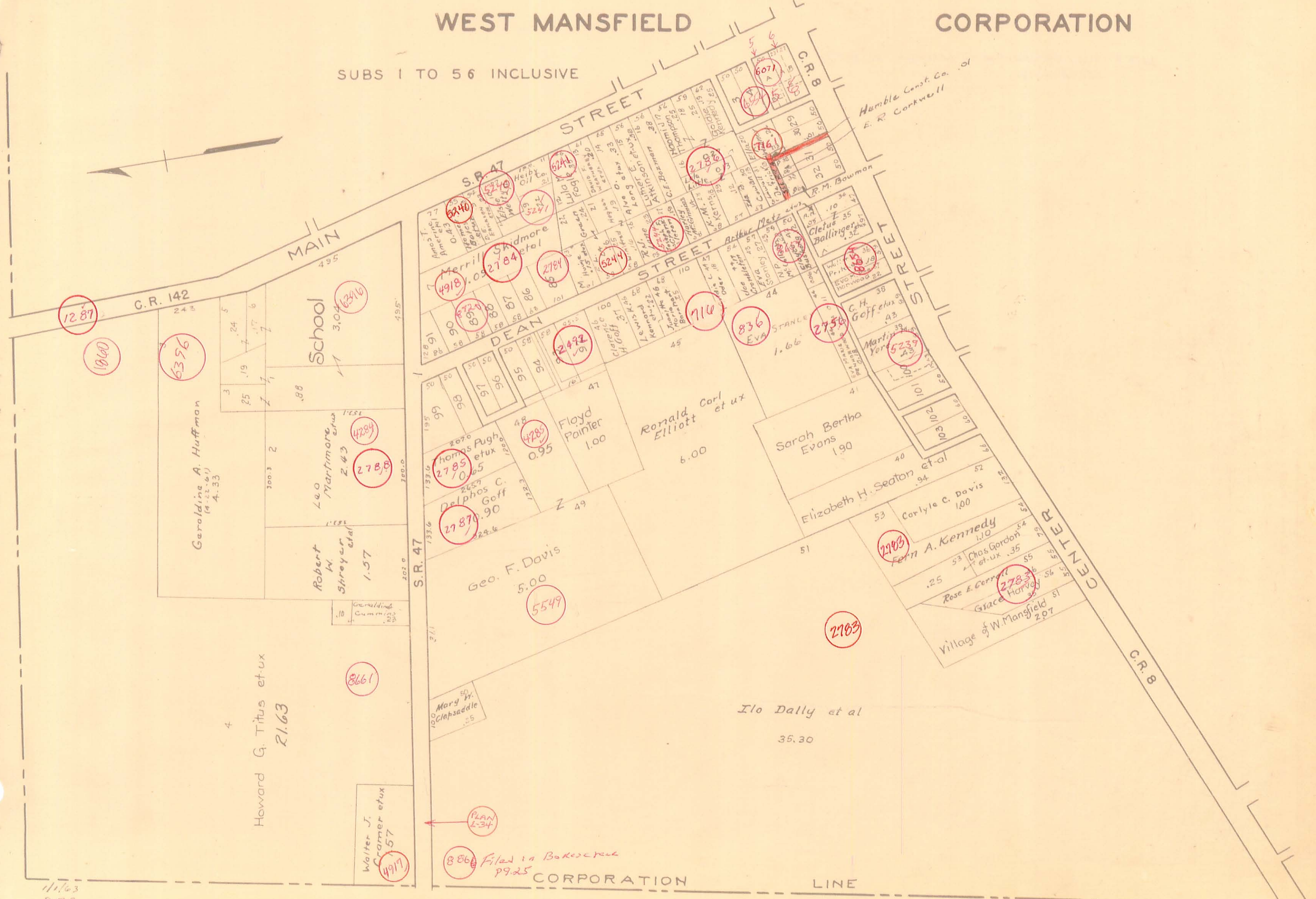
VIRGINIA MILITARY SURVEYS 755 6155

SCALE 1-INCH = 200 FEET

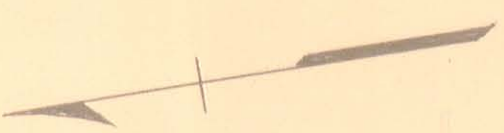
WEST MANSFIELD CORPORATION

SUBS 1 TO 56 INCLUSIVE

92



Humble Const. Co. of E. R. Corkwell



C.R. 142

STANLEY

A. Kennedy

Center Street

C.R. 8

Geo. F. Davis 5.00

Ronald Elliott et ux 6.00

Sarah Bertha Evans 1.90

Elizabeth H. Seaton et al .94

Carlyle C. Davis 1.00

Rose E. Correll et ux .35

Grace Harney 2.783

Village of W. Mansfield 2.07

Ilo Dally et al 35.30

Geroldine A. Huffman (4-22-61) 4.33

Robert W. Sprey et al 1.57

Howard G. Titus et ux 21.63

Walter J. Cramer et ux 57

8866 Filed in Bokescreek 99.25

PLAN 2-34

1/1/63 D.E.G.