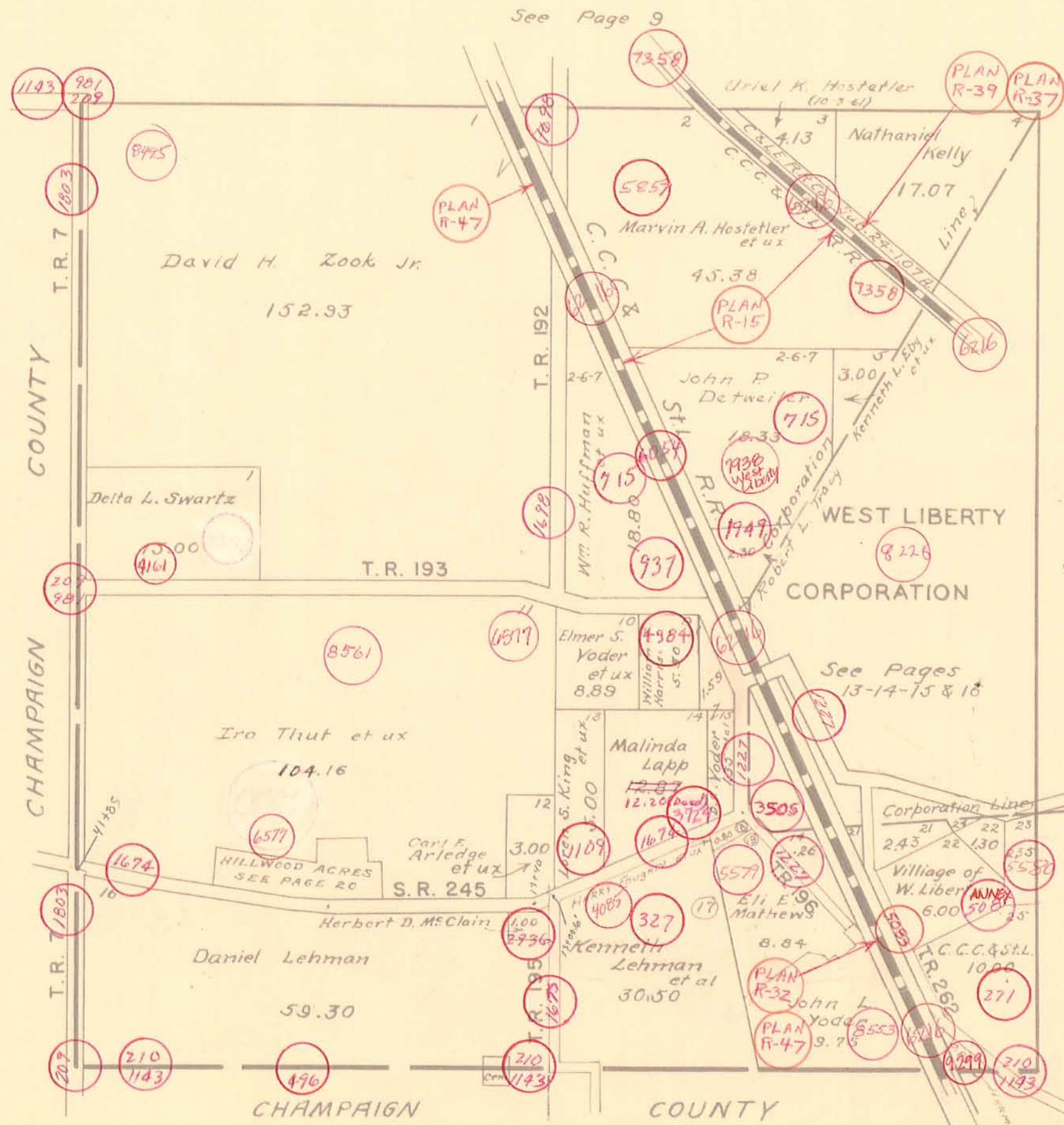


LIBERTY TOWNSHIP  
SECTION 33 TOWN 5 RANGE 13

SCALE 10 CHAINS TO THE INCH



SEE PAGE 11

ANNEXATION 5580

Sub	Name	Acres
14	Loren S. King et ux	0.26
21	PEARLNE SMITH (4-18-62)	0.75
21	Joseph L. Mast Jr. Trustee	2.43
22	Joseph L. Mast Jr. Trustee	1.30
23	Sarah E. Cretcher	2.35
24	ESCH'S MEATS, INC. (7-27-62)	0.20