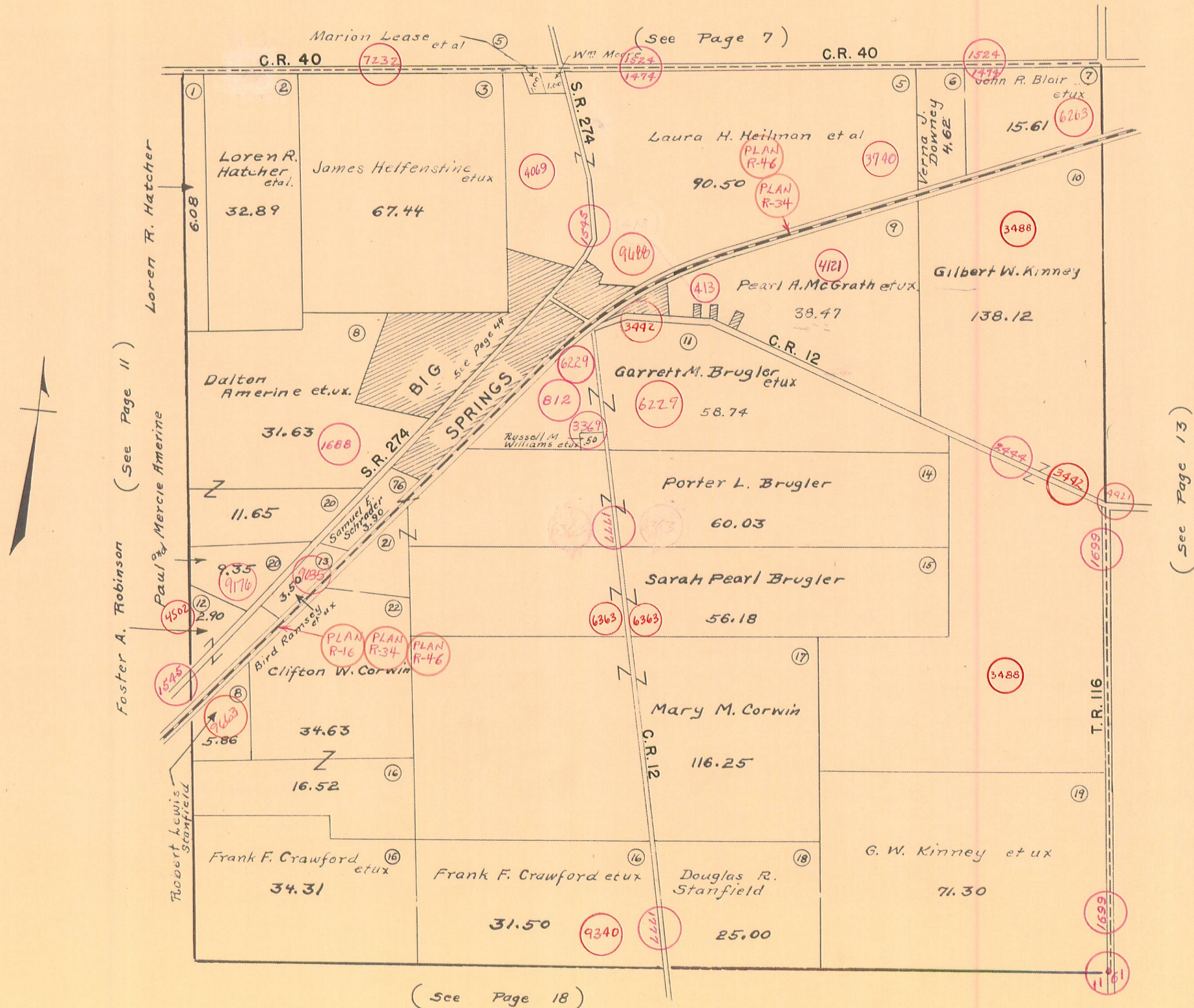


RUSHCREEK TOWNSHIP
VIRGINIA MILITARY SURVEY 9956

SCALE 10 CHAINS TO THE INCH



Foster A. Robinson (See Page 11)

Loren R. Hatcher

Paul & Mercie Amerine

Robert Lewis Stanfield

(See Page 7)

(See Page 13)

(See Page 18)