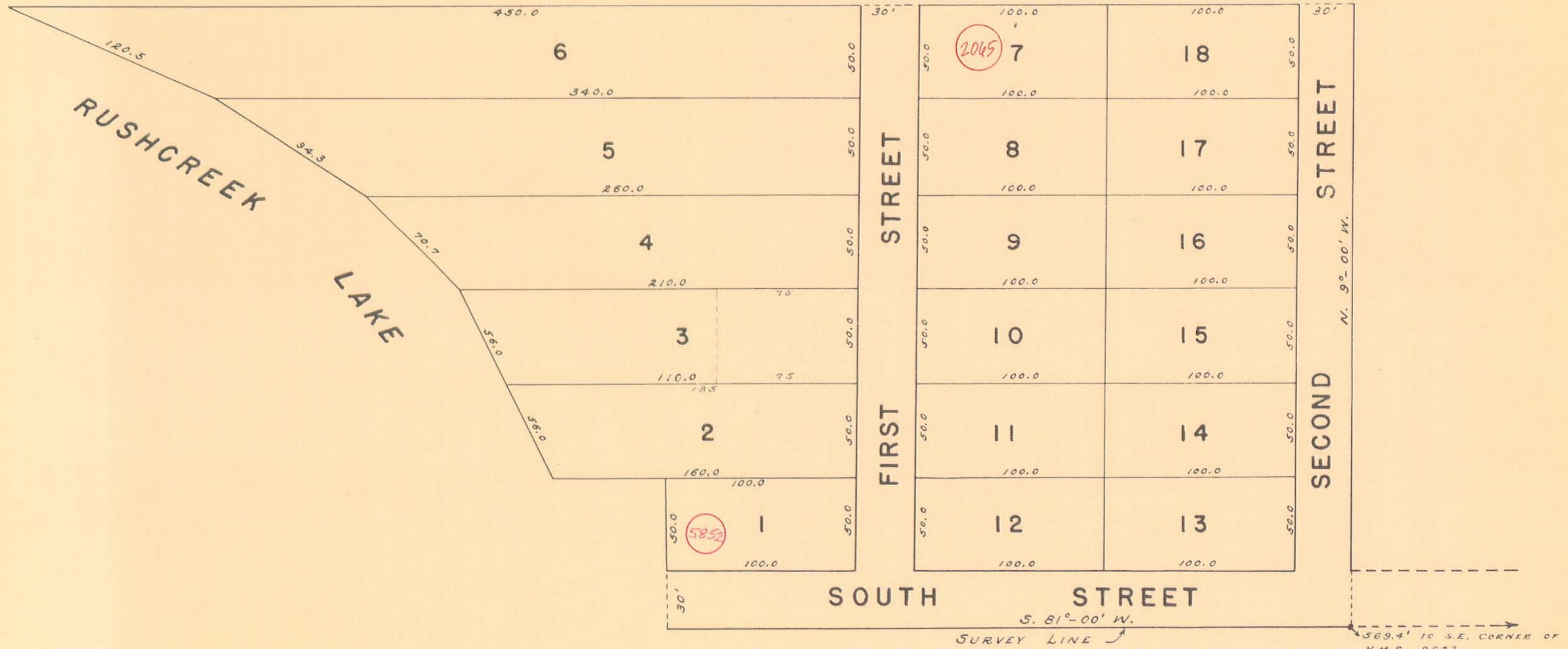


RUSHCREEK TOWNSHIP
 WATKINS ALLOTMENT NO. 1
 VIRGINIA MILITARY SURVEY 9823

2065 SEE NOTE BELOW

SCALE 1 INCH = 50 FEET



NOTE: RECORDED PLAT SHOWS THIS DISTANCE TO BE 669.4' FROM S.E. CORNER OF V.M.S. (SEE 3-76). BECAUSE OF THIS, I FEEL ALL SURVEYS, OR RECORDED PLAT, ARE WRONG AS THE DISTANCES DON'T WORK OUT (SEE R-2065) RECOMMEND RESURVEYING ALL LOTS OR RE-RECORDING PLAT SHOWING CORRECT DISTANCE.