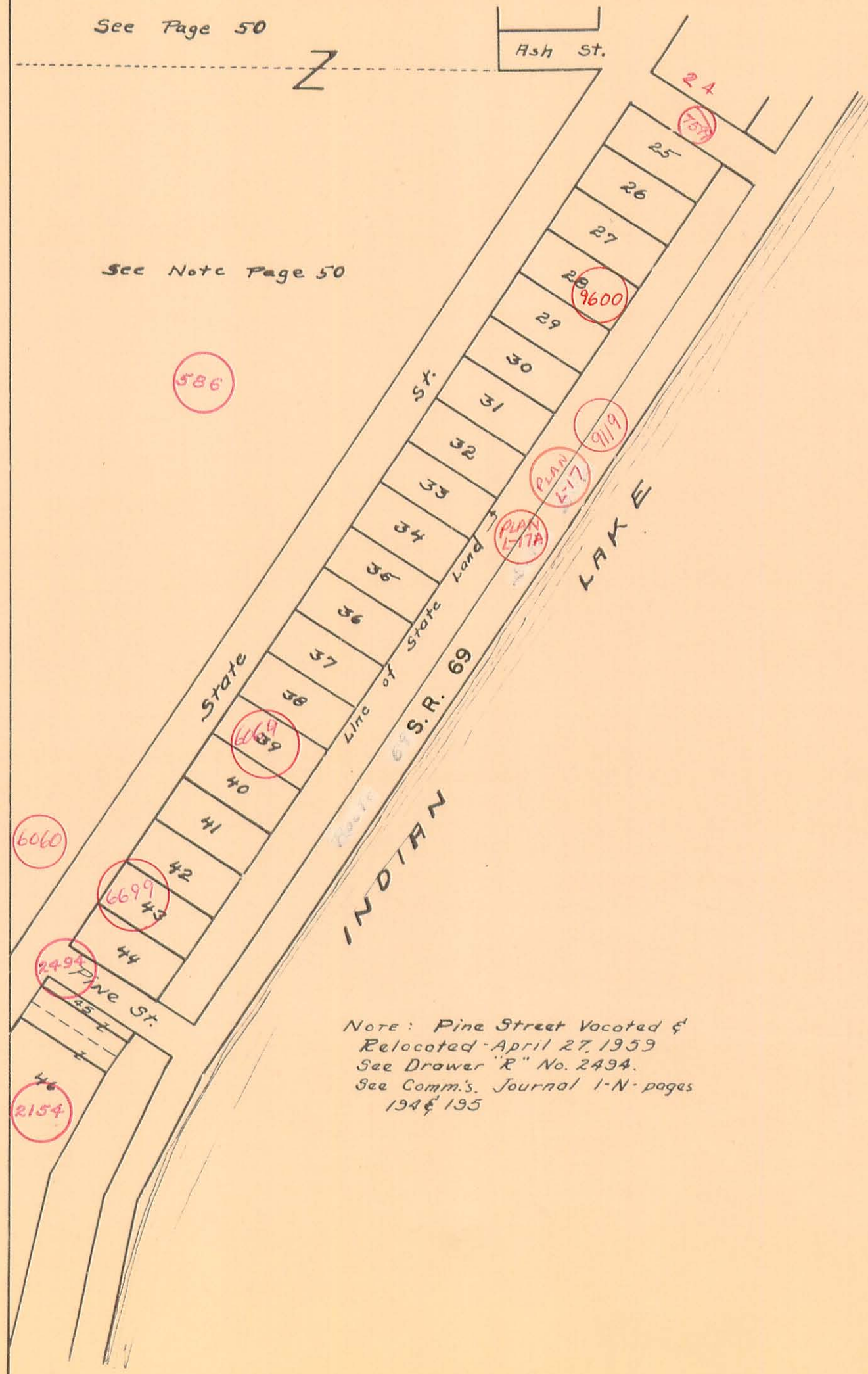


STOKES TOWNSHIP
SECTION 27 TOWN 6 S. RANGE 8 E.

SCALE 100 FEET TO THE INCH

LAKESIDE ALLOTMENT



Note: Pine Street Vacated &
Relocated April 27, 1959
See Drawer "R" No. 2494.
See Comm.'s. Journal I-N pages
194 & 195