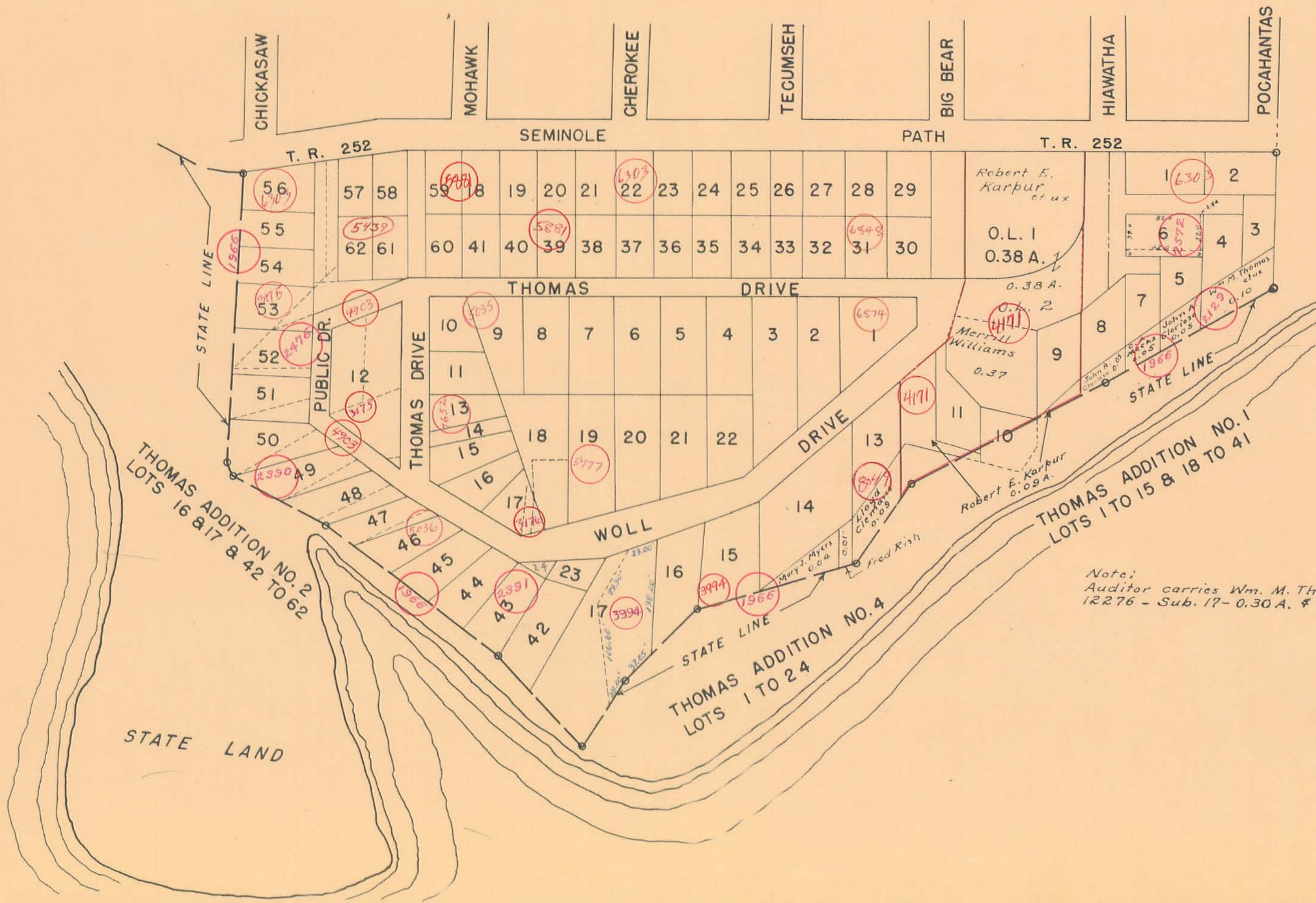


STOKES TOWNSHIP  
 THOMAS ADDITIONS NO. 1, 2 AND 4. (490)  
 CHIPPEWA PARK, V.M.S. 12276

SCALE 1-INCH = 100 FEET



Note:  
 Auditor carries Wm. M. Thomas in V.M.S.  
 12276 - Sub. 17 - 0.30 A. & 1.34 A.