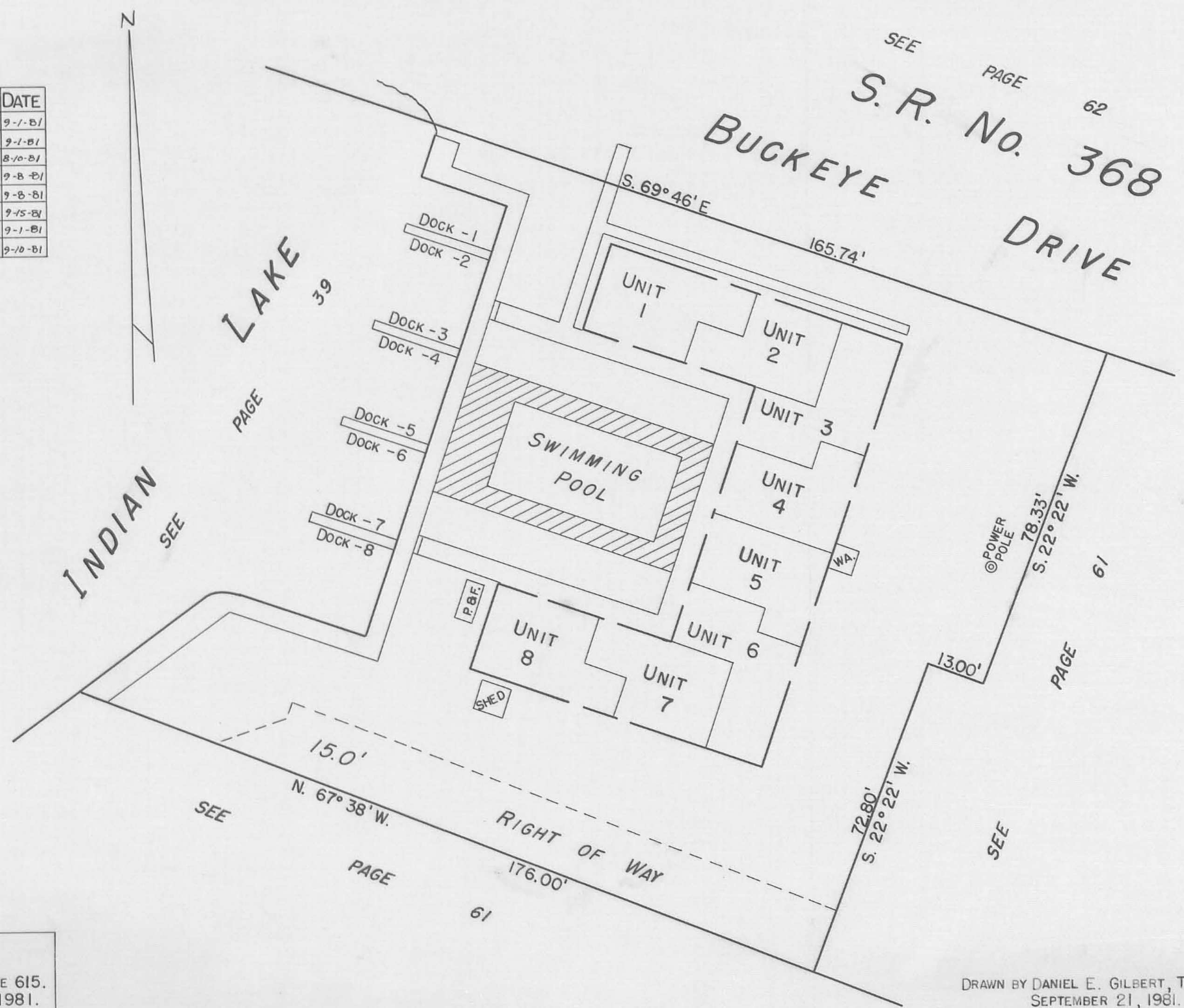


STOKES TOWNSHIP
 ANCHOR LODGE CONDOMINIUM
 SHAWNEE ISLAND

61-A

SCALE: 1" = 20'

UNIT	NAME	DATE
1	STEPHEN P. CHURCHILL ETUX	9-1-81
2	RICHARD C. GRAY ETUX	9-1-81
3	JANE E. OVERLY	8-10-81
4	ROBERT WINKER ETUX	9-8-81
5	LEROY MAZE ETUX	9-8-81
6	CHARLES T. MOSSMAN ETUX	9-15-81
7	ROBERT J. TERBRUEGGEN ETUX	9-1-81
8	ROBERT PONTE ETUX	9-10-81



SEE PAGE 62
 S. R. No. 368
 BUCKEYE DRIVE

INDIAN LAKE
 SEE PAGE 39

SEE PAGE 61
 15.0'
 N. 67° 38' W.
 RIGHT OF WAY
 176.00'

POWER POLE
 78.33'
 S. 22° 22' W.
 61
 13.00'
 S. 22° 22' W.
 SEE PAGE 61

ANCHOR LODGE CONDOMINIUM.
 UNITS 1 THRU 8 INCL.
 RECORDERS PLAT CABINET A, PAGE 615.
 ENGINEERS FILE J-253, AUGUST 1981.

DRAWN BY DANIEL E. GILBERT, T.M.D.
 SEPTEMBER 21, 1981.