

STOKES TOWNSHIP

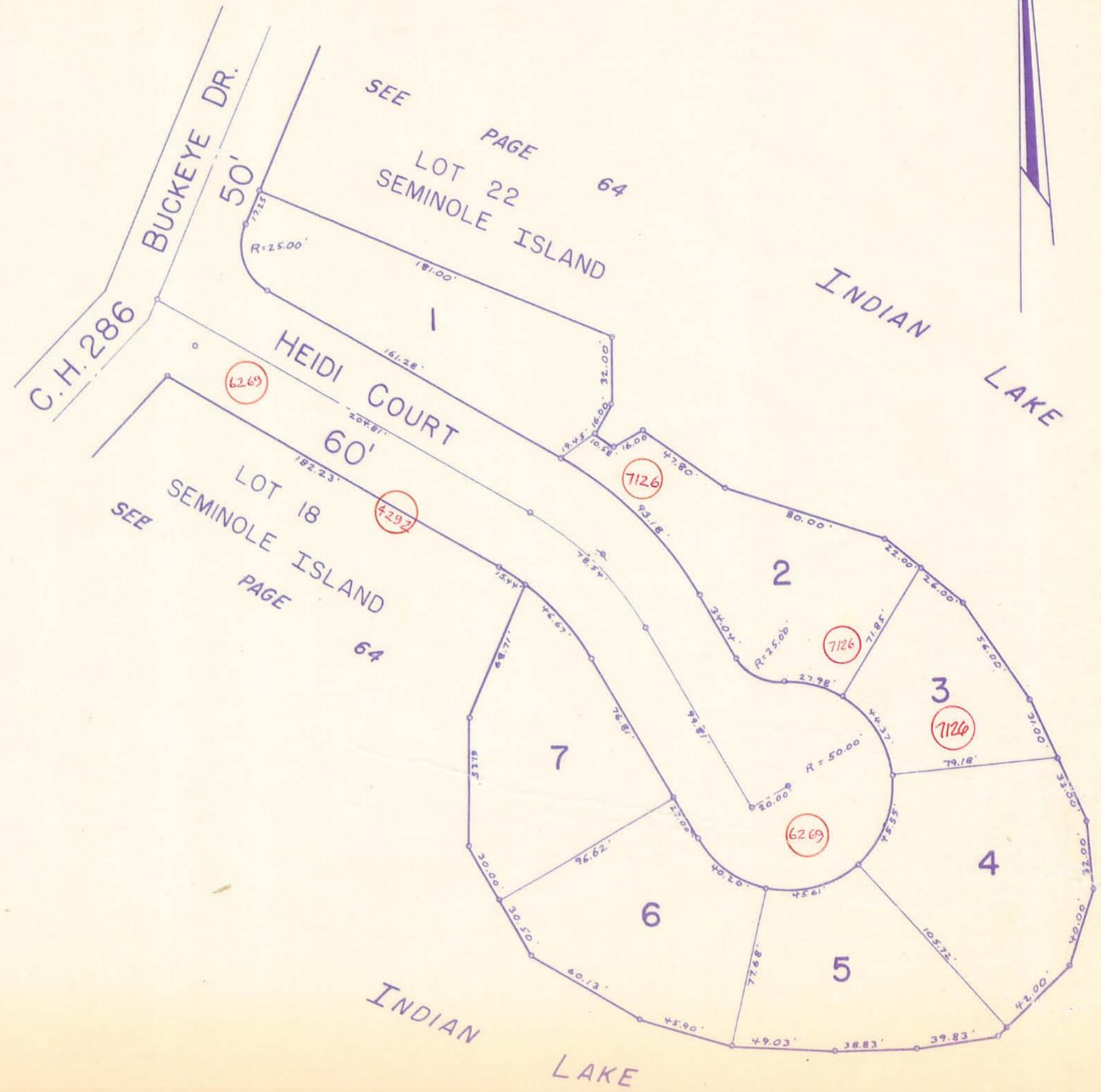
SUNRISE SHORE ALLOT.

SEMINOLE ISLAND

V.M.S. NO. 12276

64 B

SCALE: 1"=50'



LOT	NAME	DATE
1	FRANK EMMELHEINTZ	3-28-79
2	" "	" "
3	" "	" "
4	" "	" "
5	VERNON N. WEBER ETAL	9-17-80
6	PHILIP K. COOPER ETAL	11-26-81
7	DALE R. SMITH, TRUSTEE	11-30-82

DRAWN BY:
DANIEL E. GILBERT, T.M.D. 4-27-79

SUNRISE SHORES SUBDIVISION
LOTS 1-7 INCL. - 1.91 ACRES
CABINET A SLIDE 601
ENG FILE J-248

39

PAGE

SEE