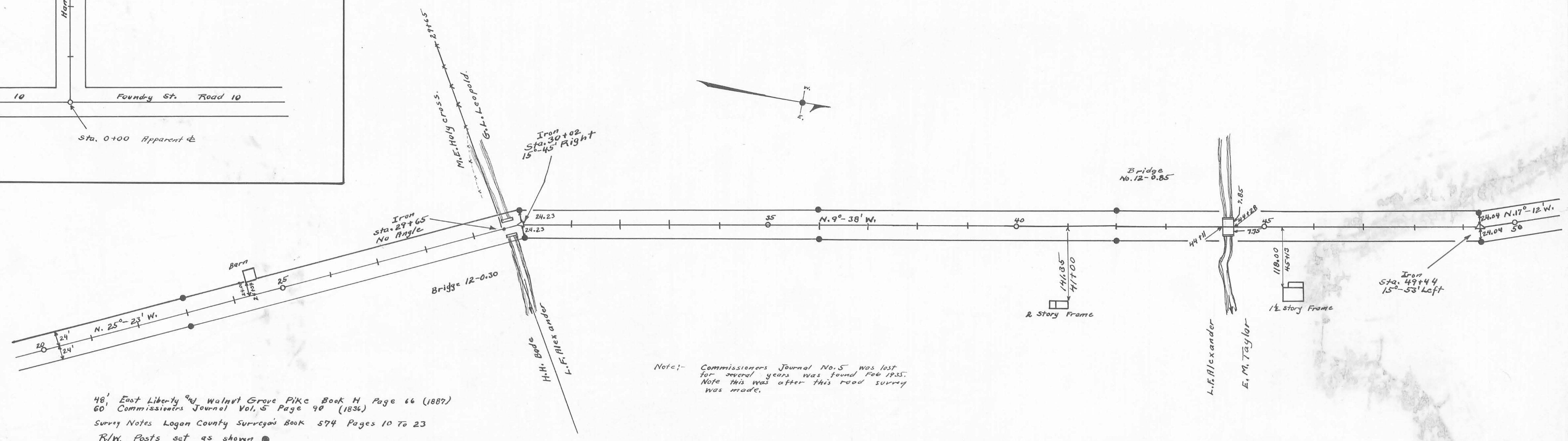
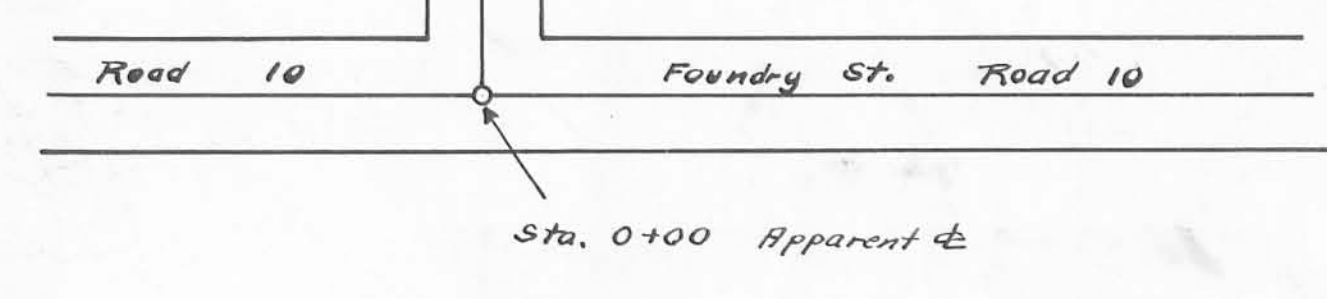


PAR. 1X~2X~3X~CHANNEL EASEMENT
 LOG ~ 292 ~ (1.62~1.71)
 M. & R. ~ 1961
 PF 270

LIBERTY

EAST



Note:- Commissioners Journal No. 5 was lost for several years was found Feb 1935. Note this was after this road survey was made.

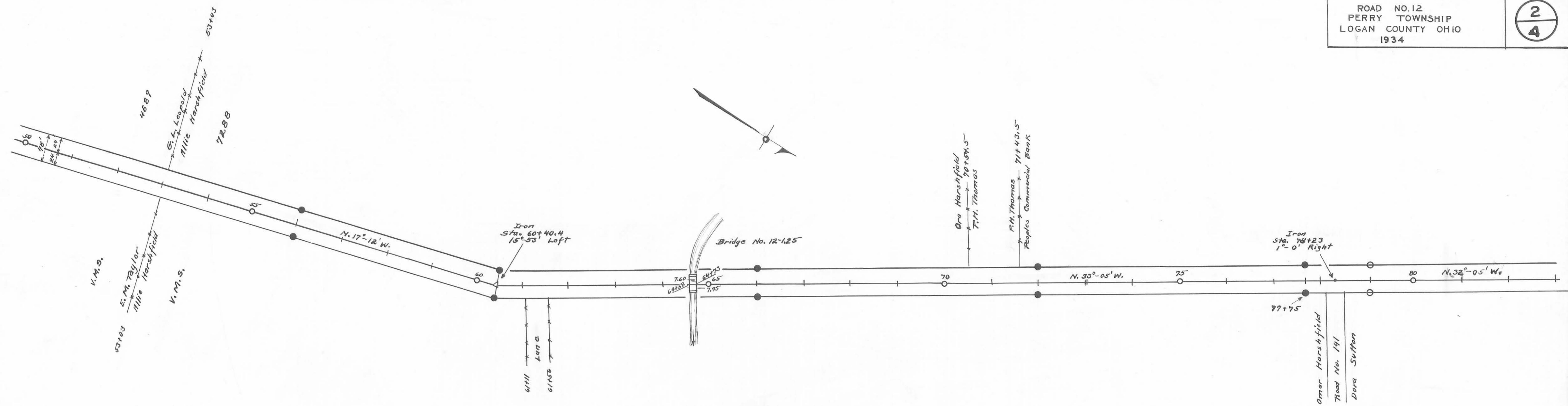
48' East Liberty and Walnut Grove Pike Book H Page 66 (1887)
 60' Commissioners Journal Vol. 5 Page 90 (1836)
 Survey Notes Logan County Surveyors Book 574 Pages 10 To 23
 R/W. Posts set as shown

Surveyed Jan. 1934 by F.K.Wright
 Drawn March 1936 by F.K.Wright

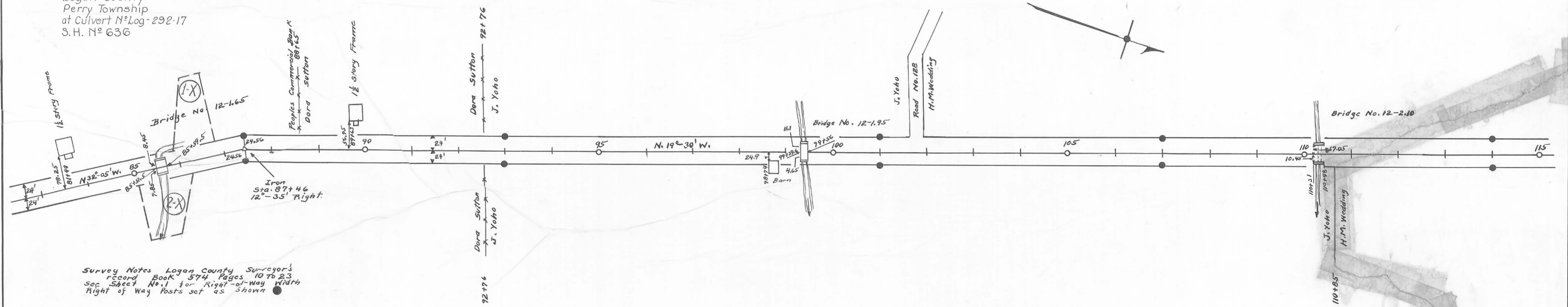
ROAD 12

X-12

X-12

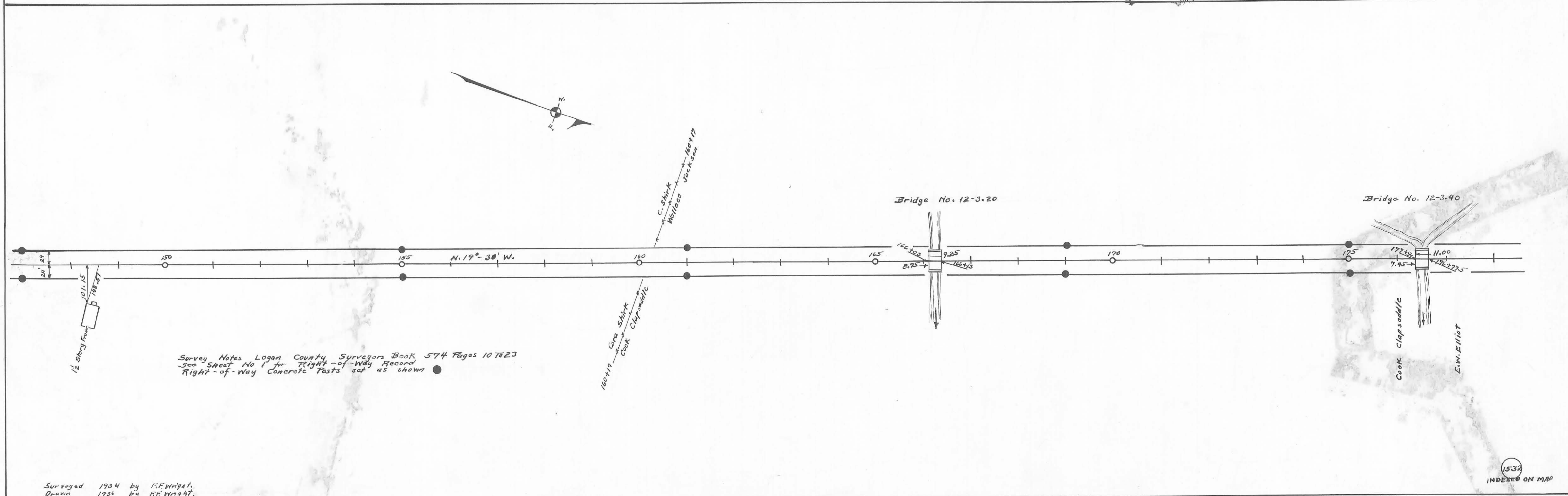
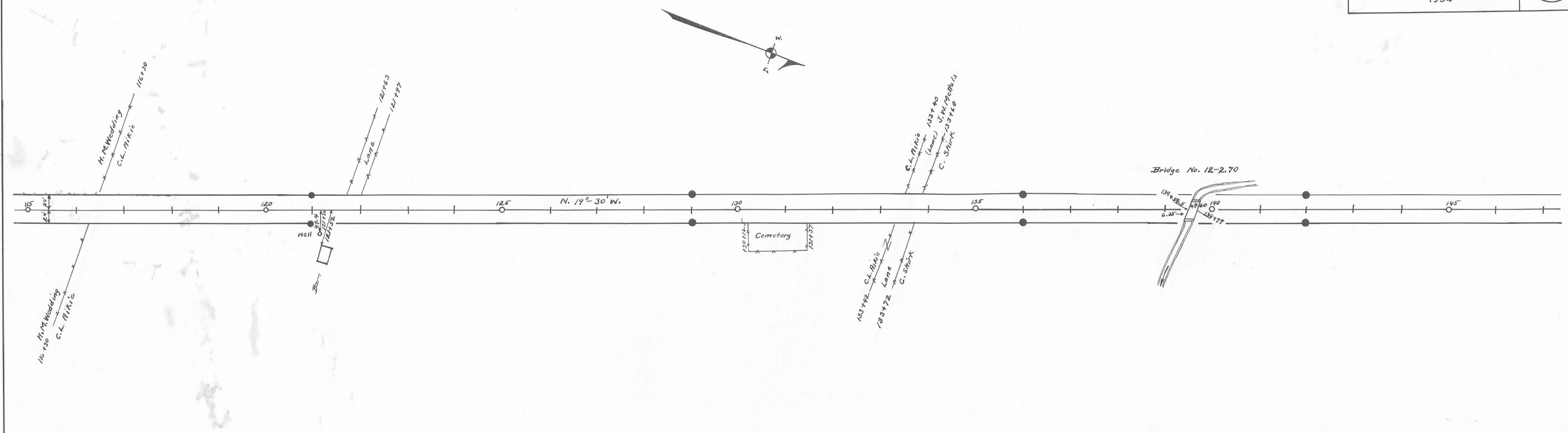


Par. N° 1-X-2-X For Channel Easement
 See R/W Plan
 Logan County
 Perry Township
 at Culvert N° Log-292-17
 S.H. N° 636



Survey Notes Logan County Surveyor's
 record Book 574 Pages 10 to 23
 sec. Sheet No. 1 for Right-of-way Width
 Right of Way Posts set as shown

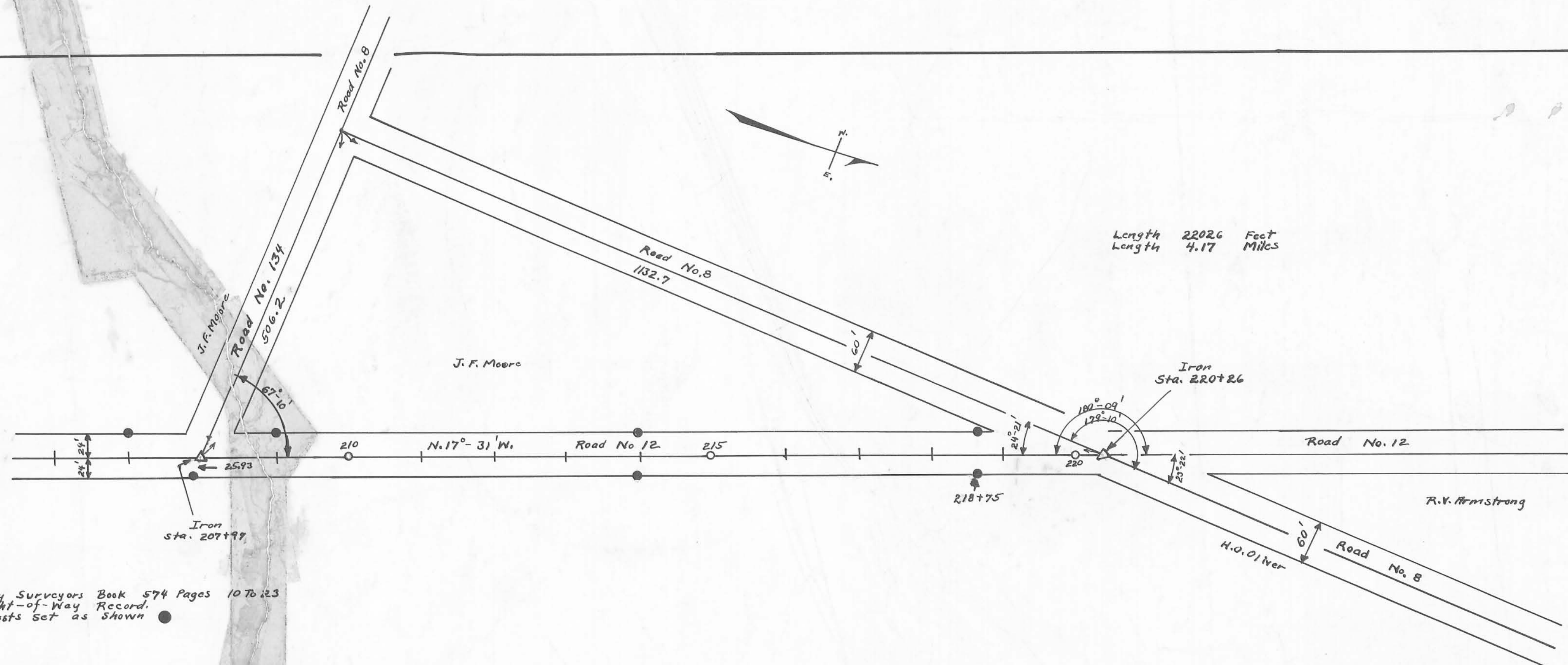
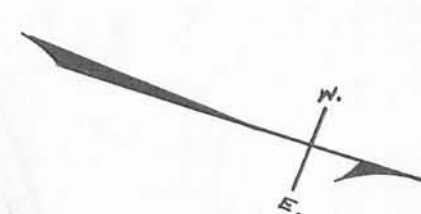
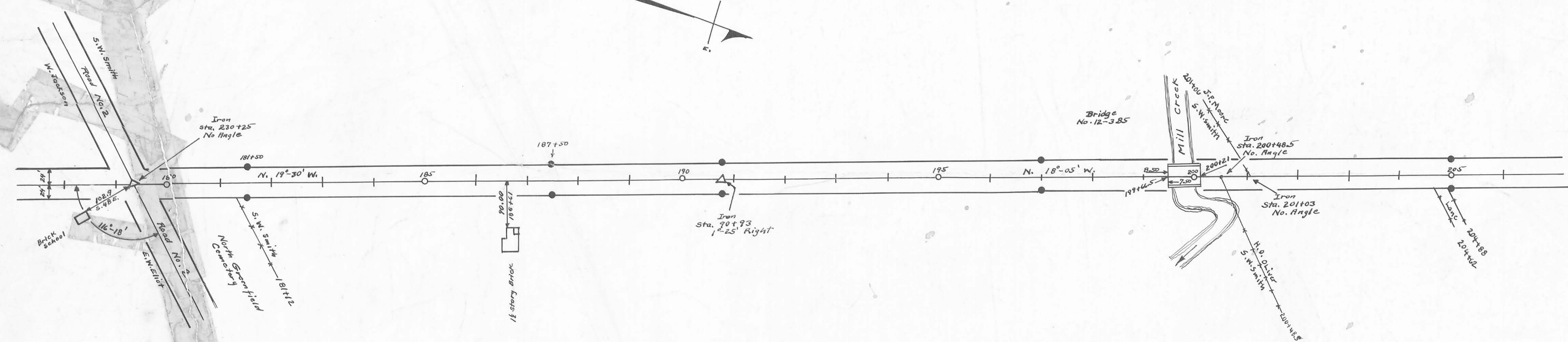
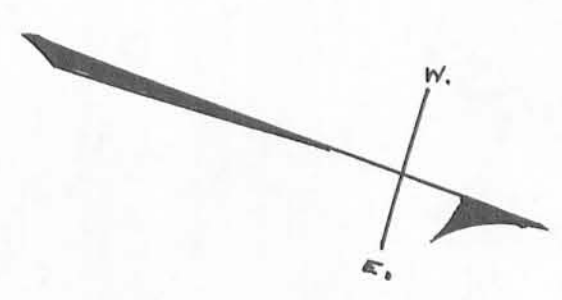
Surveyed Jan 1934 By R.F. Wright.
 Drawn March 1936 By R.F. Wright.



Survey Notes Logan County, Surveyors Book 574 Pages 10723
 See Sheet No 1 for Right-of-Way Record
 Right-of-Way Concrete Posts set as shown

Surveyed 1934 by F.F. Wright,
 Drawn 1934 by F.F. Wright.

1532
 INDEXED ON MAP



Survey Notes Logan County Surveyors Book 574 Pages 10 To 23
 See Sheet No. 1 for Right-of-Way Record.
 Right-of-Way Concrete Posts Set as Shown

Surveyed 1934 by M.F. Wright
 Drawn 1936 by F.F. Wright