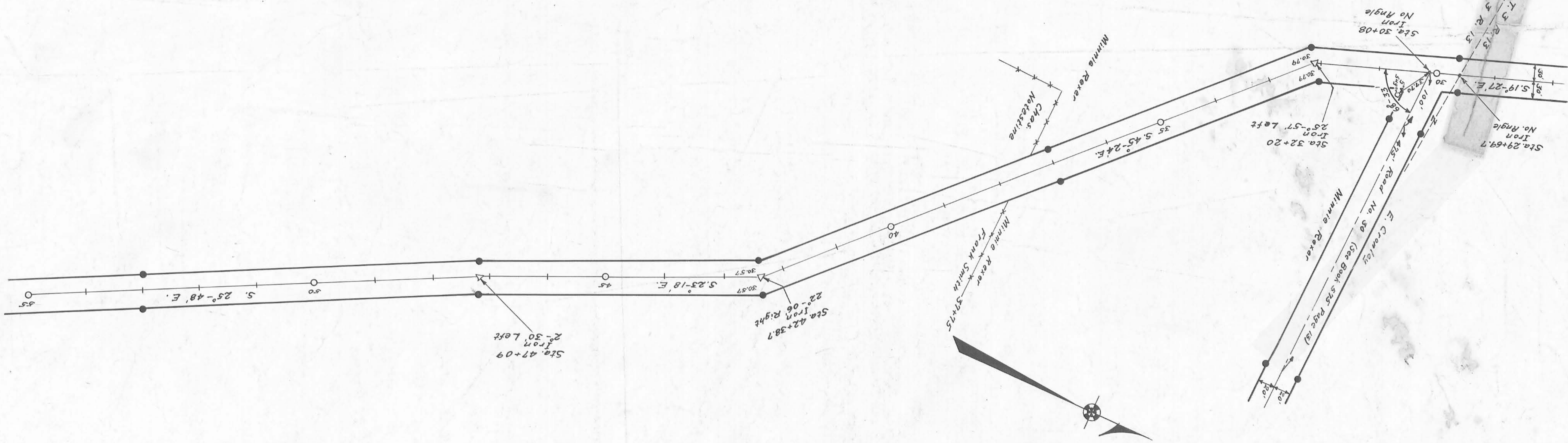
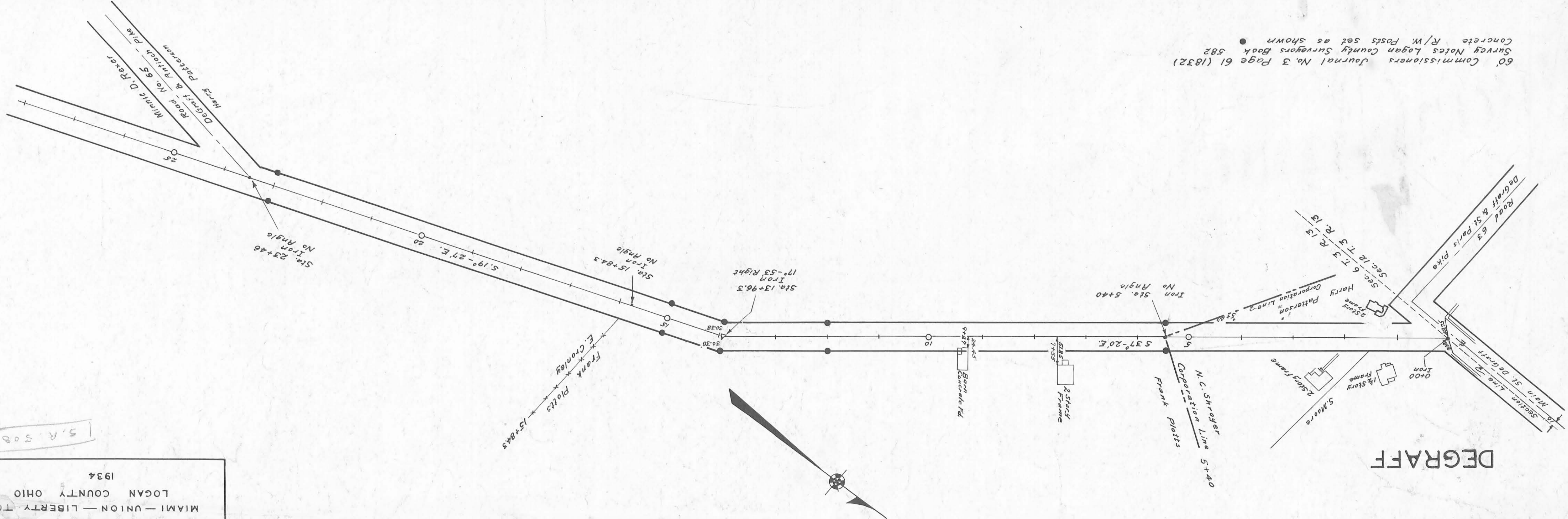


Surveyed By F.F. Wright 1933
Drawn By E.F. Wright 1936



60 Commissioners Journal No. 3 Page 61 (1832)
Survey Notes Logan County Surveyors Book 582
Concrete R/W Posts set as shown

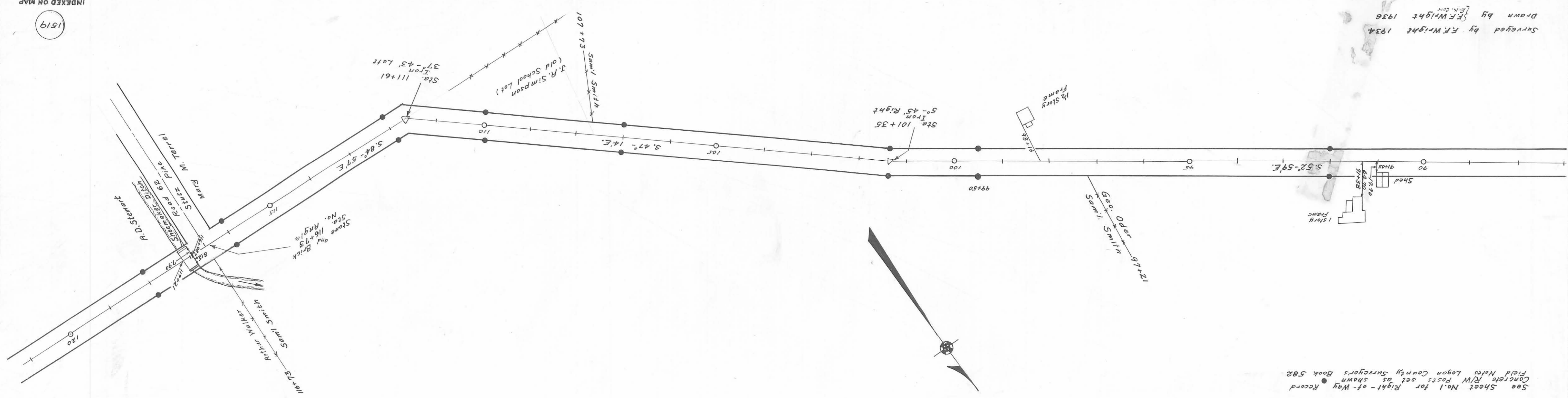
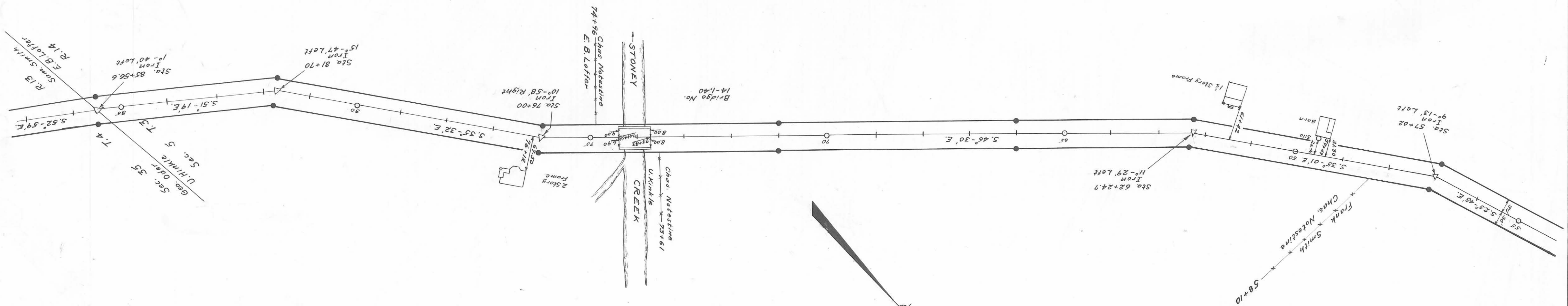


ROAD 14
MIAMI-UNION-LIBERTY TOWNSHIPS
LOGAN COUNTY OHIO
1934
S.A. 508

INDEXED ON MAP
1519

ROAD 14
 MIAMI-UNION-LIBERTY TOWNSHIPS
 LOGAN COUNTY OHIO
 1934

2
 8

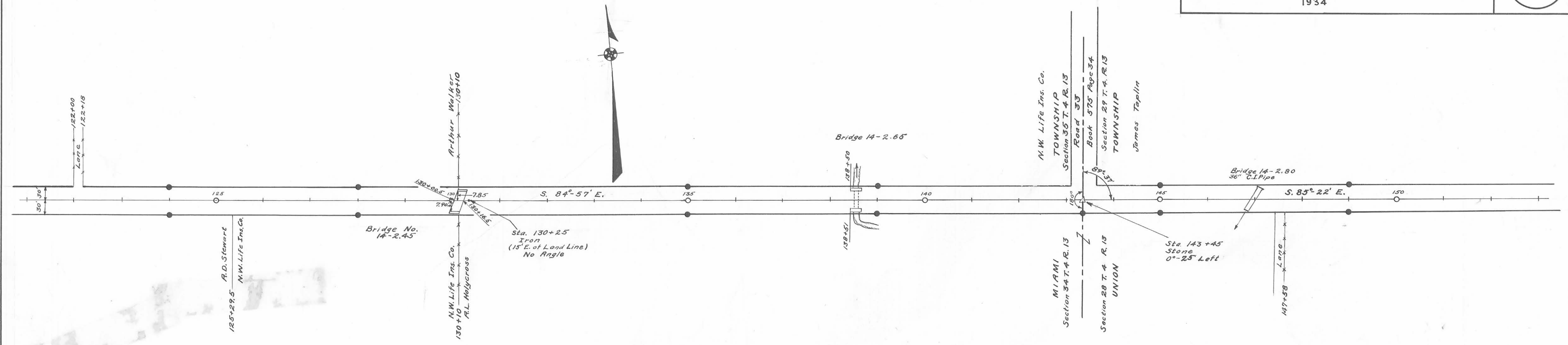


See Sheet No. 1 for Right-of-Way Record
 Concrete R/W Posts set as shown
 Field Notes Logan County Surveyors Book 582

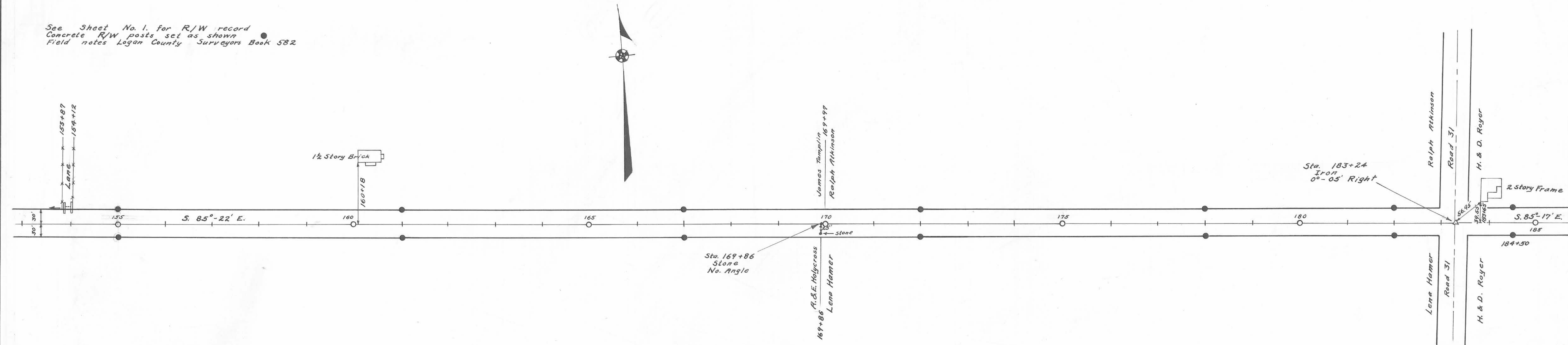
Surveyed by F.F. Wright 1934
 Drawn by E.F. Wright 1936

X-14

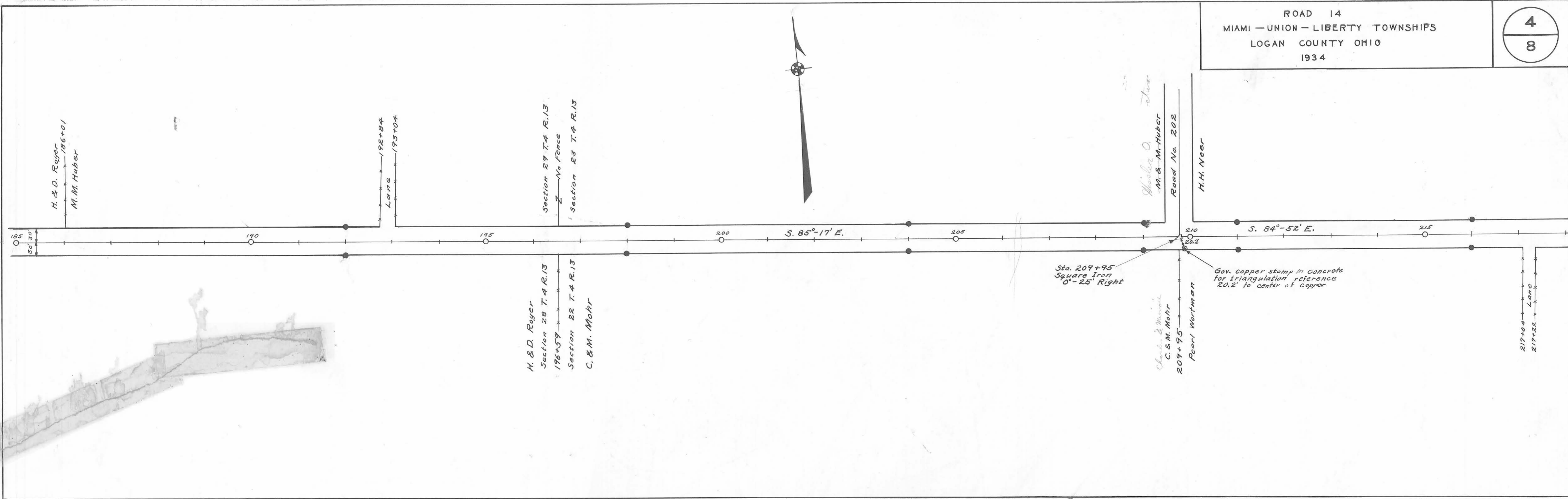
INDEXED ON MAP
 1519



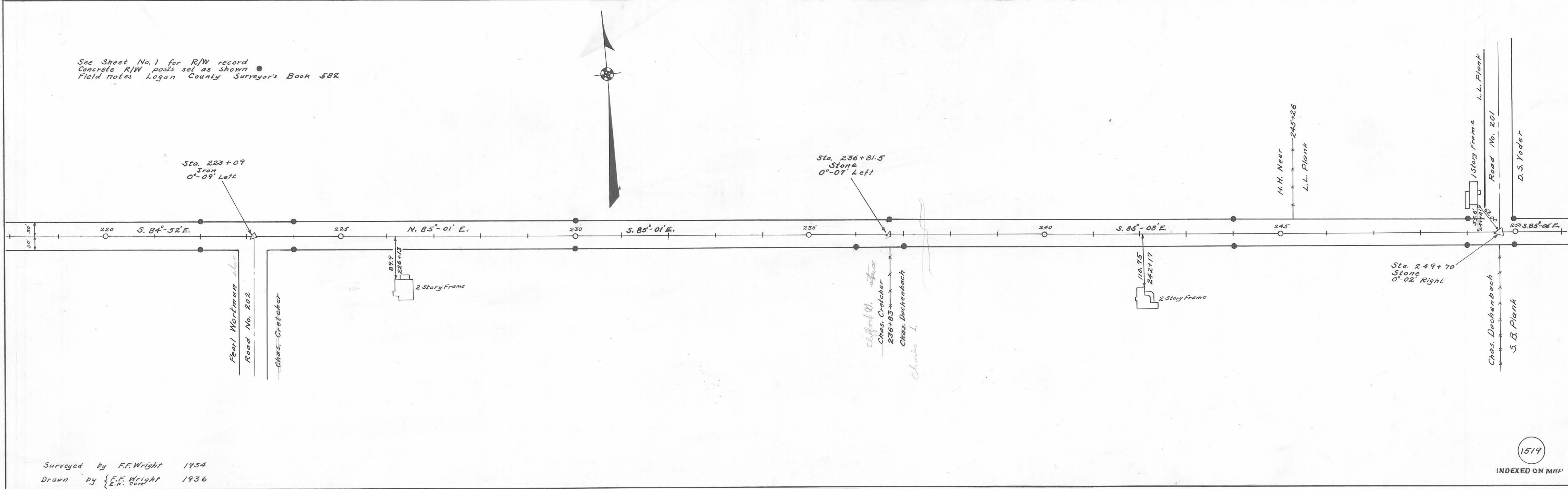
See Sheet No. 1, for R/W record
 Concrete R/W posts set as shown
 Field notes Logan County Surveyors Book 582



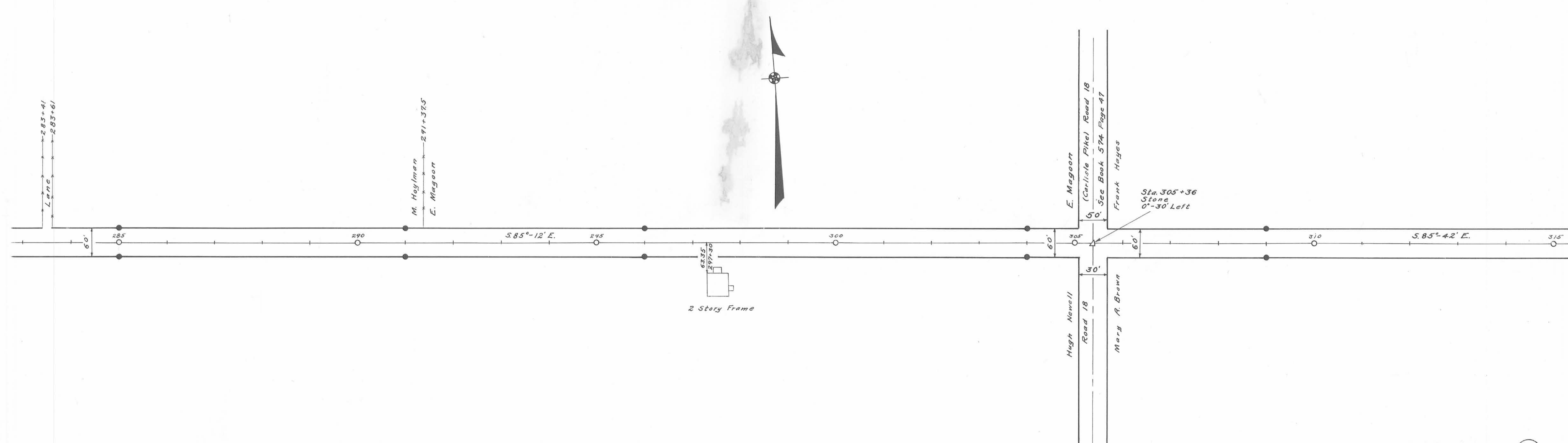
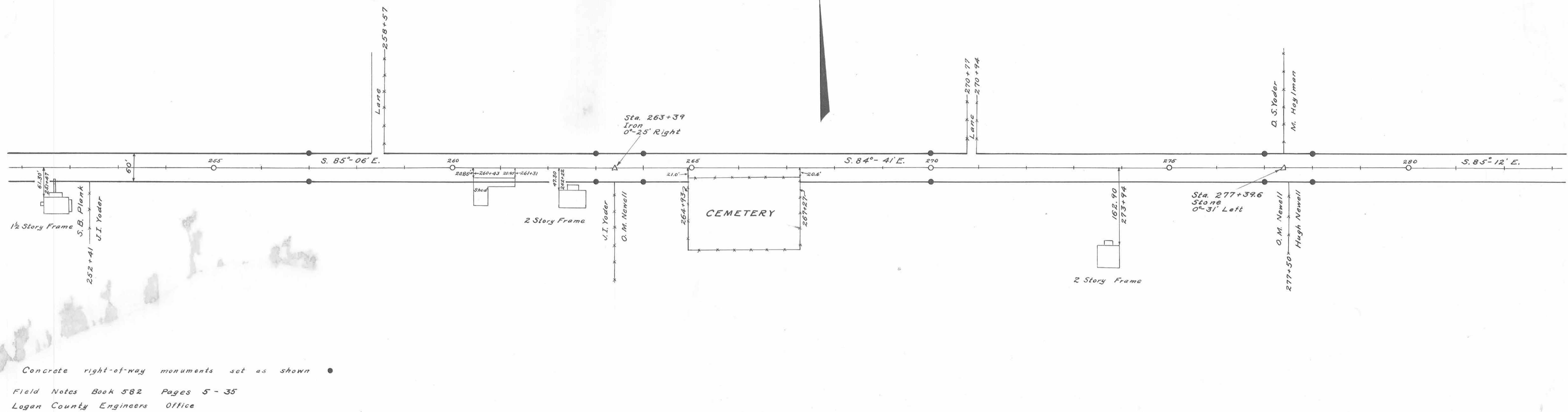
Surveyed By F.F. Wright 1934
 Drawn By F.F. Wright 1936
 E.K. Core



See Sheet No. 1 for R/W record
Concrete R/W posts set as shown
Field notes Logan County Surveyor's Book 582

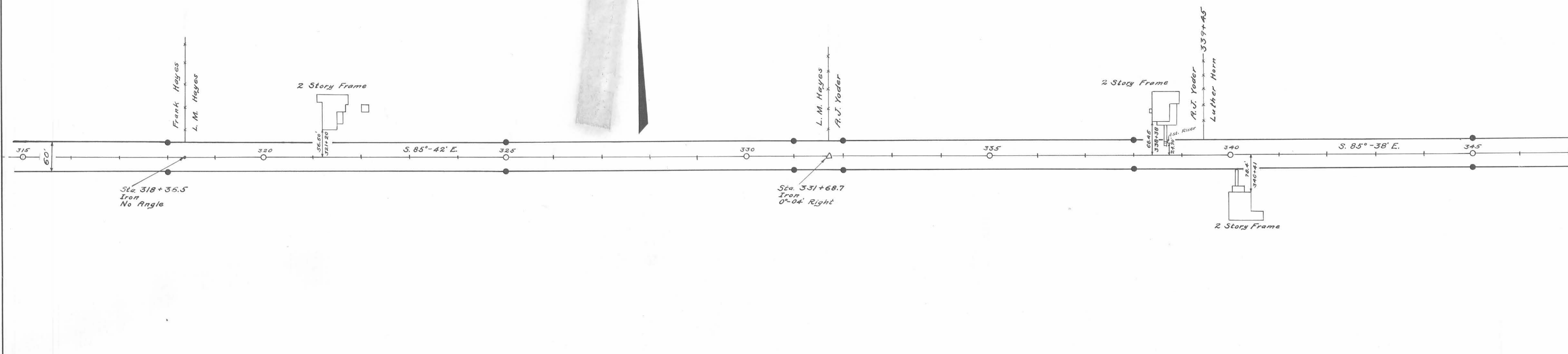


Surveyed by F.F. Wright 1934
Drawn by E.F. Wright 1936



Surveyed By F.F. Wright
 December 1933
 Drawn By E.K. Core
 April 1936

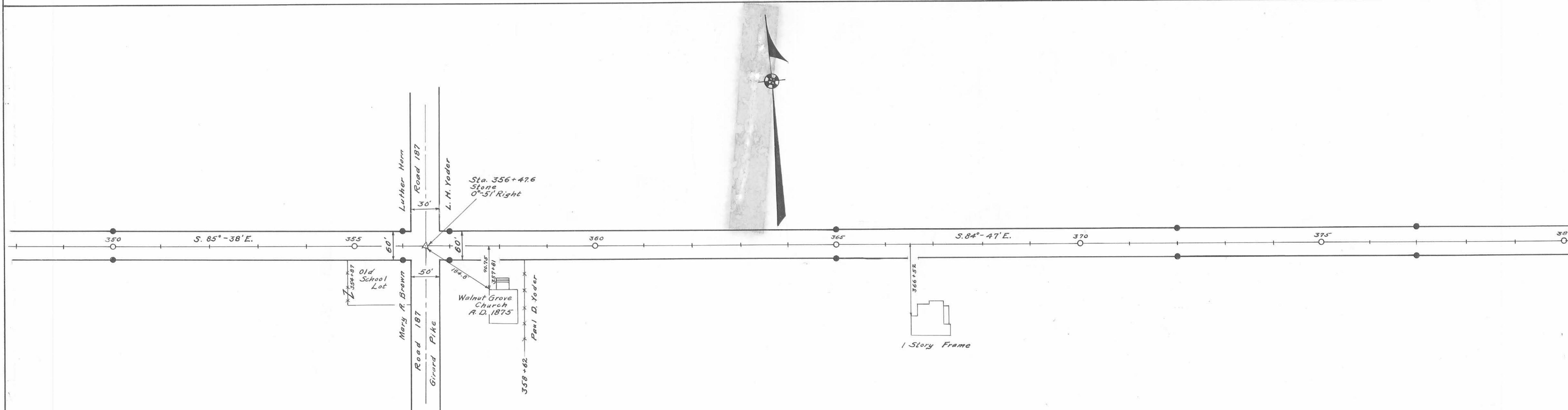
ROAD 14
 MIAMI-UNION-LIBERTY TOWNSHIPS
 LOGAN COUNTY OHIO
 1934



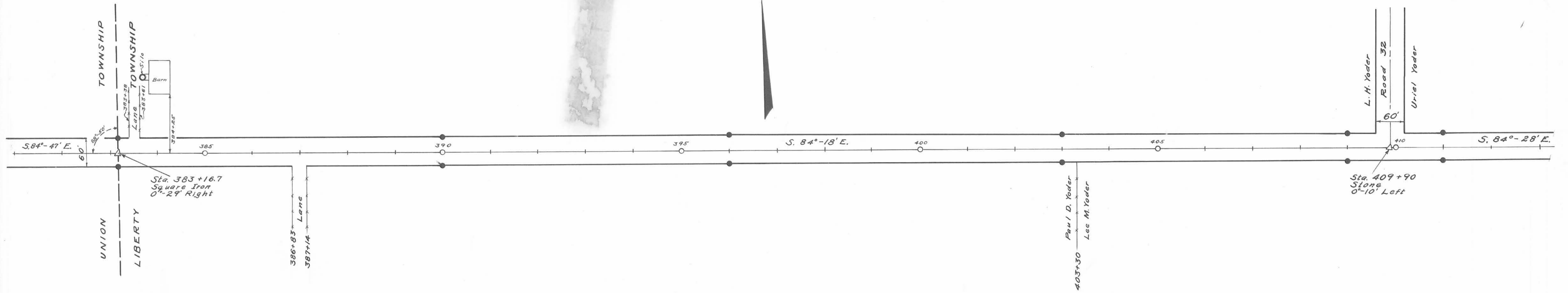
Concrete right-of-way monuments set as shown ○

Field Notes Book 582 Pages 5-35

Logan County Engineer's Office



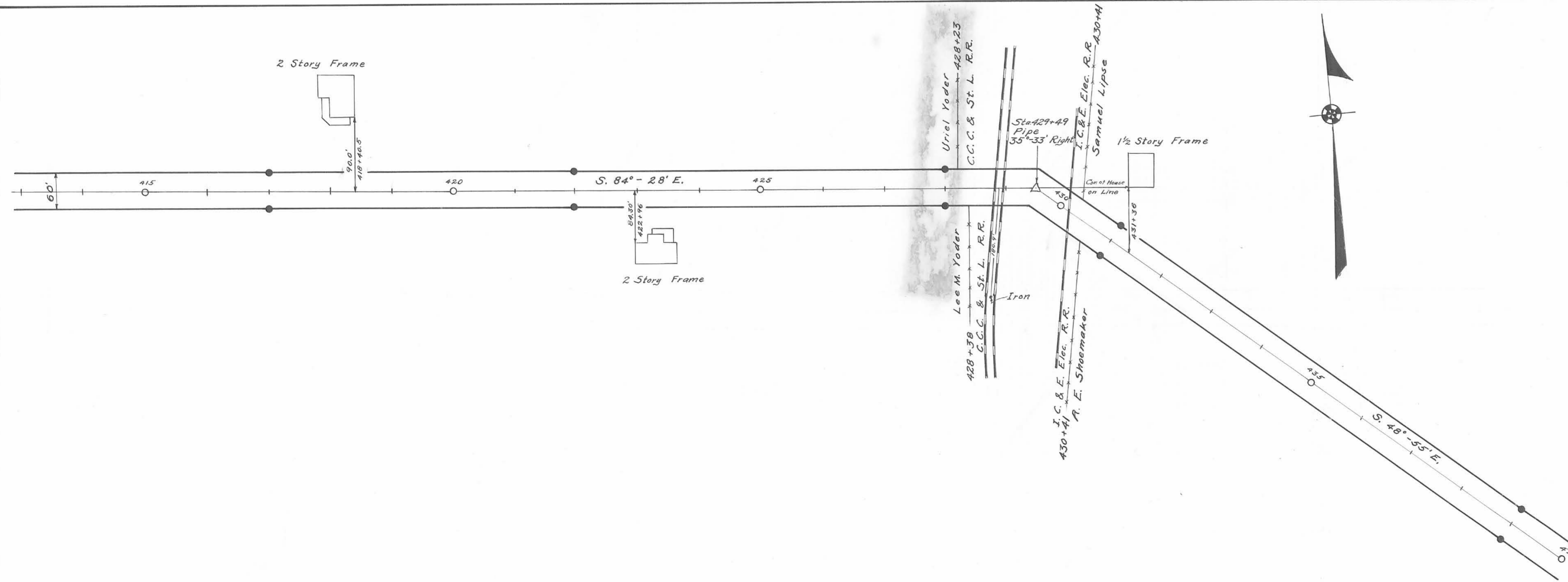
Surveyed By F.F. Wright
 December 1933
 Drawn By E.K. Core
 April 1936



Concrete right-of-way monuments set as shown

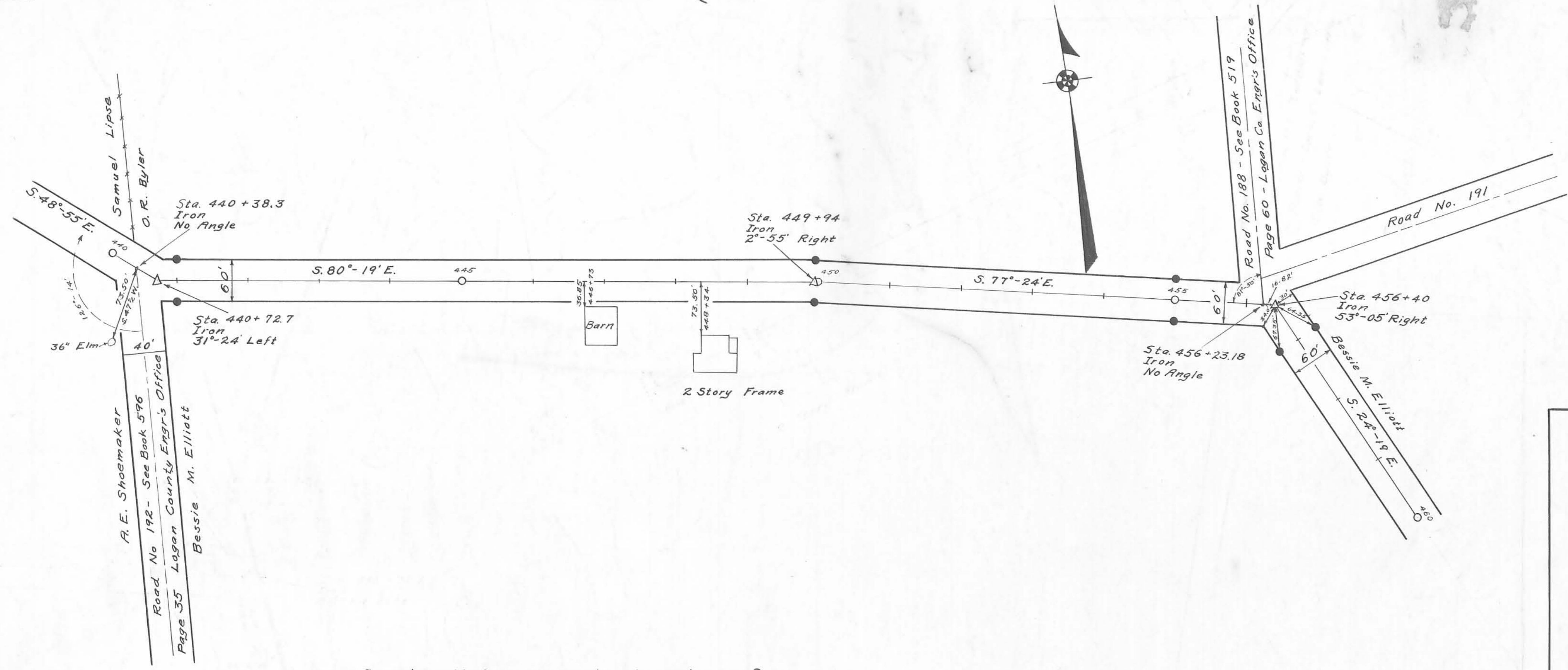
Field Notes Book 582 Pages 5-35

Logan County Engineer's Office

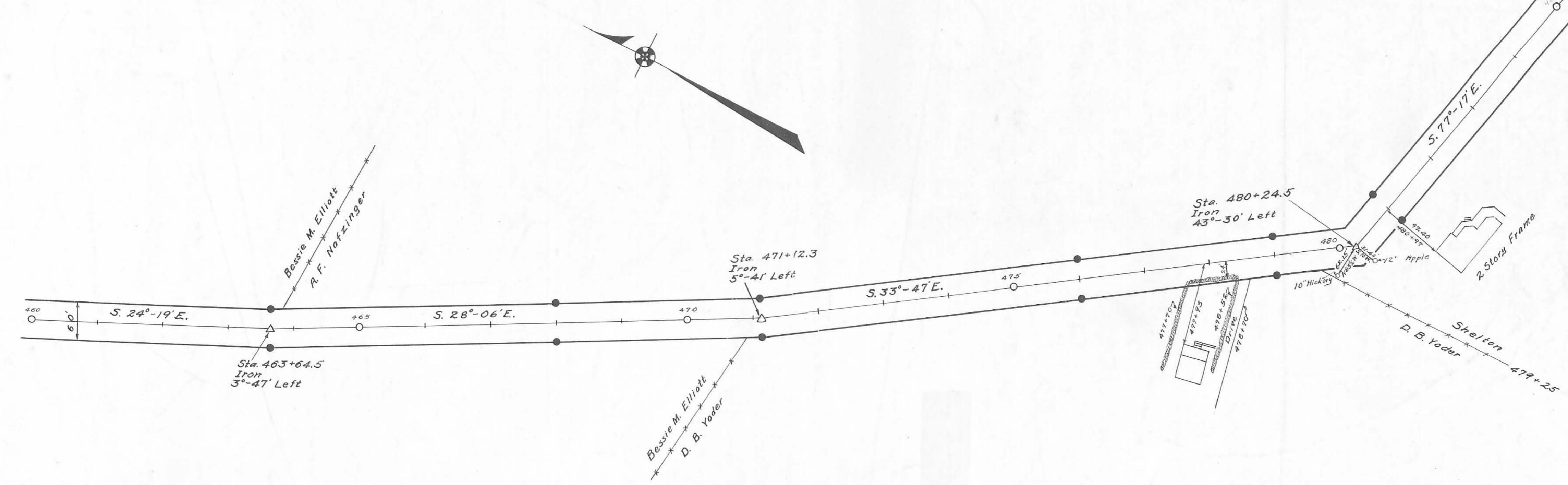
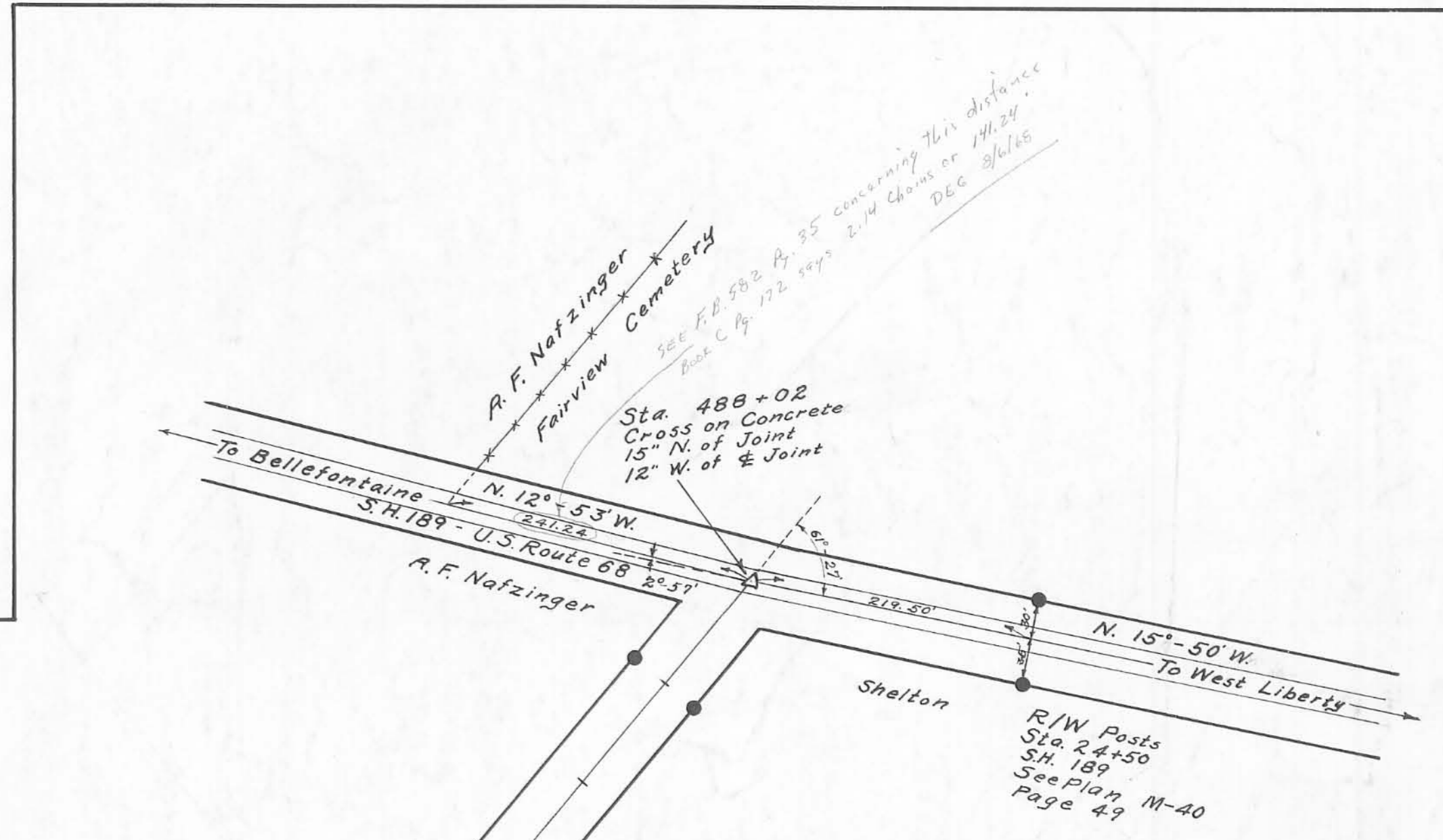


Surveyed By F.F. Wright
 December 1933

Drawn By E.K. Core
 May 1936



Concrete right-of-way monuments set as shown ○
 Field Notes Book 582 Pages 5-35
 Logan County Engineers Office



Surveyed By F.F. Wright
 December 1933
 Drawn By E.K. Core
 May 1936