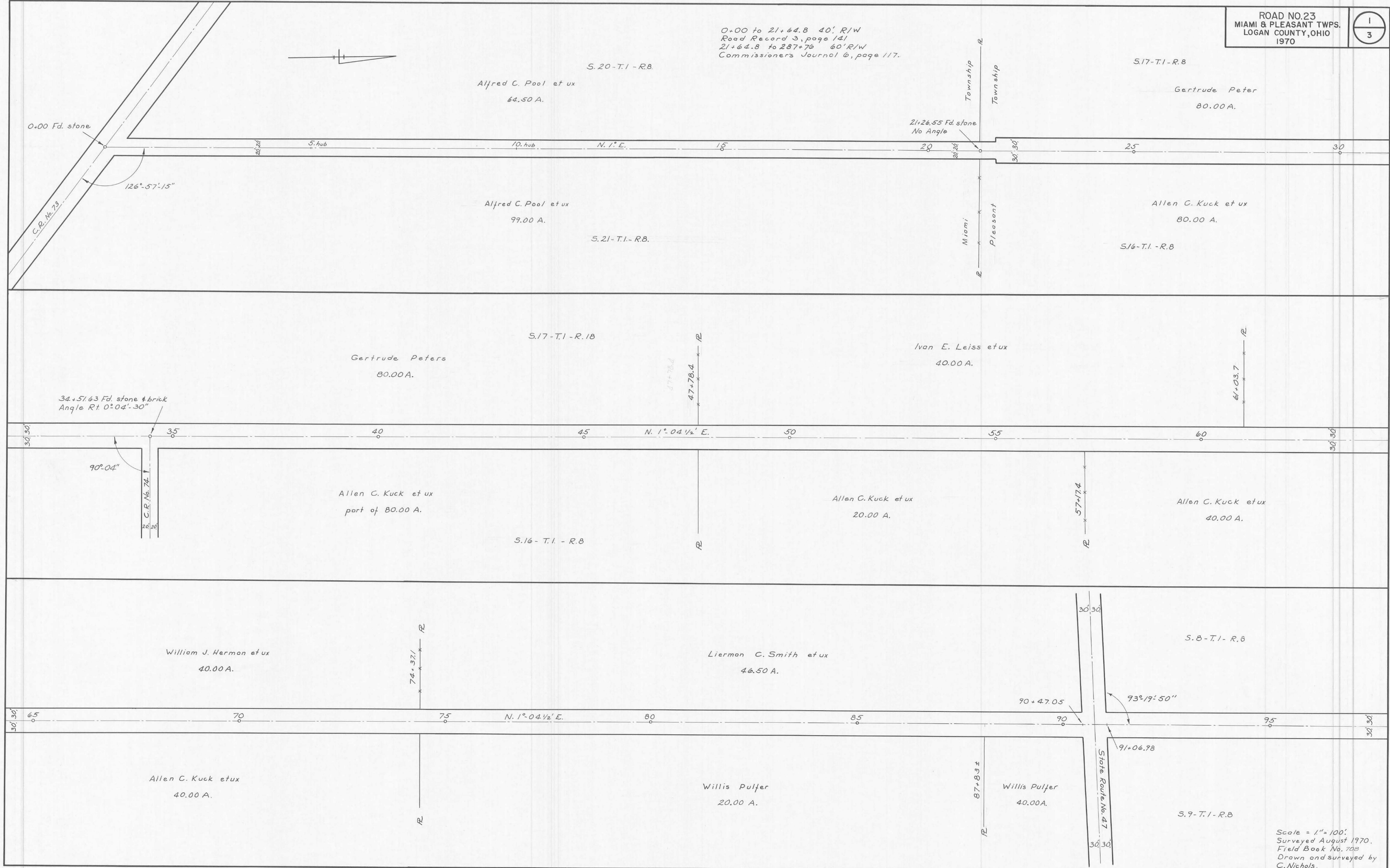
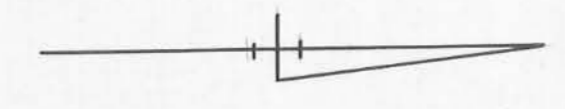


0+00 to 21+64.8 40' R/W
Road Record 3, page 141
21+64.8 to 287+76 60' R/W
Commissioners Journal 6, page 117.



ROAD NO. 23

Scale = 1" = 100'.
Surveyed August 1970.
Field Book No. 708
Drawn and surveyed by
C. Nichols.



S. 32 T. 2 R. 8

Paul Stewart et ux
81.20 A.

207+22.79 Fd. 1/2" # iron.
Angle R 10°22'10"

N. 1°-07'-50"E.

Max W. Kreglow et ux
40.79 A.

George Pequignot et ux
80.00 A.

S. 33 T. 2 R. 8

Pleasant Twp.
Bloomfield Twp.

ROAD NO. 23

90°05'30"

233+74.43 Fd. stone.

Co. Rd. No. 58

To Shelby County