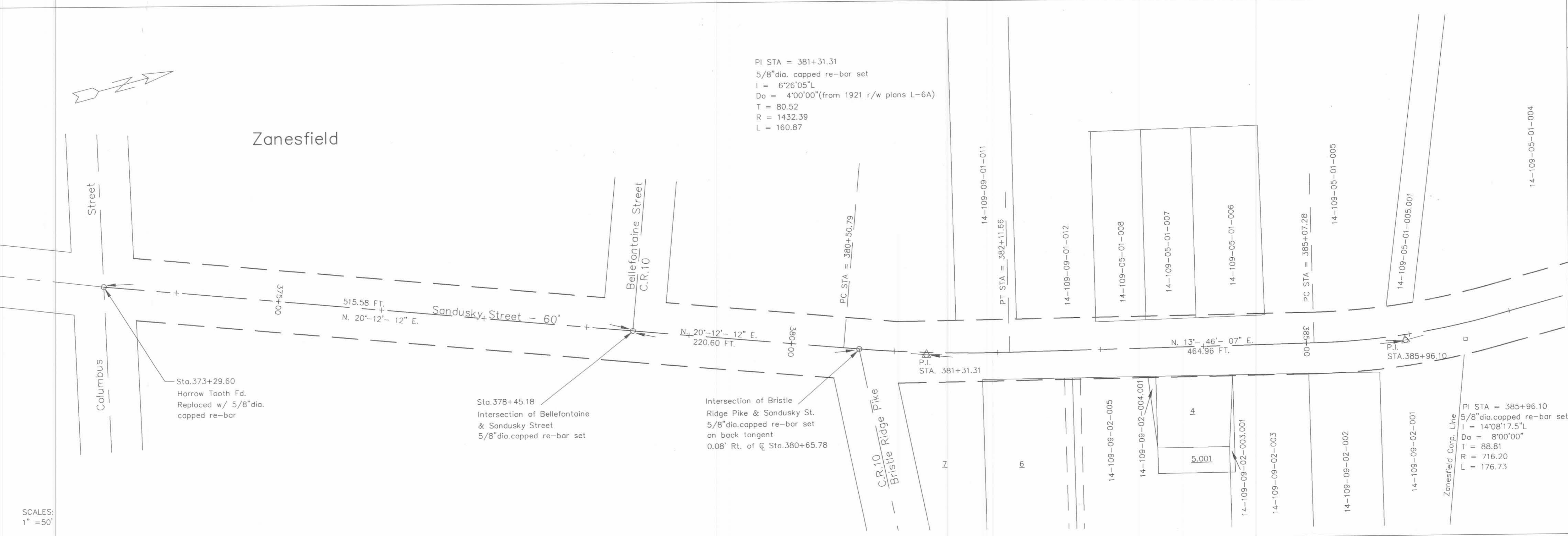


C:\My Documents\roads\0225\05991.dwg Tue Apr 25 12:29:45 2000 Jennifer L. Ganson Engineering Tech. 2



SCALES:  
1" = 50'



SCALES:  
1" = 50'

WO# 0583

APPROVED BY: SURVEYED BY: Logan County Engineer's Office  
 Curt Dill, P.E.  
 Bao Simmons

CHECKED BY: DRAWN BY: Jennifer L. Ganson

Logan County Road 5  
 Monumentation

JAMES K. COX P.E., P.S.  
 LOGAN COUNTY ENGINEER

Field Book No. 710; pgs. 17-31



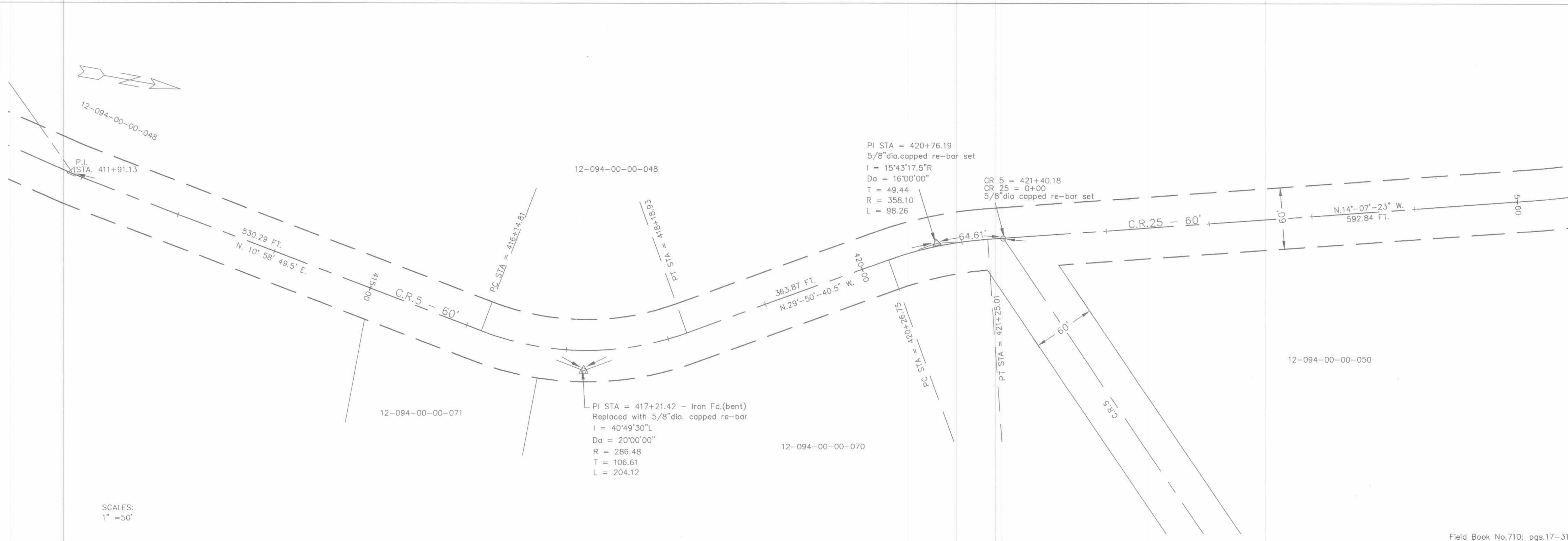
SCALES:  
1" = 50'

WO#  
0583

APPROVED BY: SURVEYED BY: Engineer's Office  
Charles Nichols  
Bob Simmons  
Drew Jennifer L. Ganson

CHECKED BY:

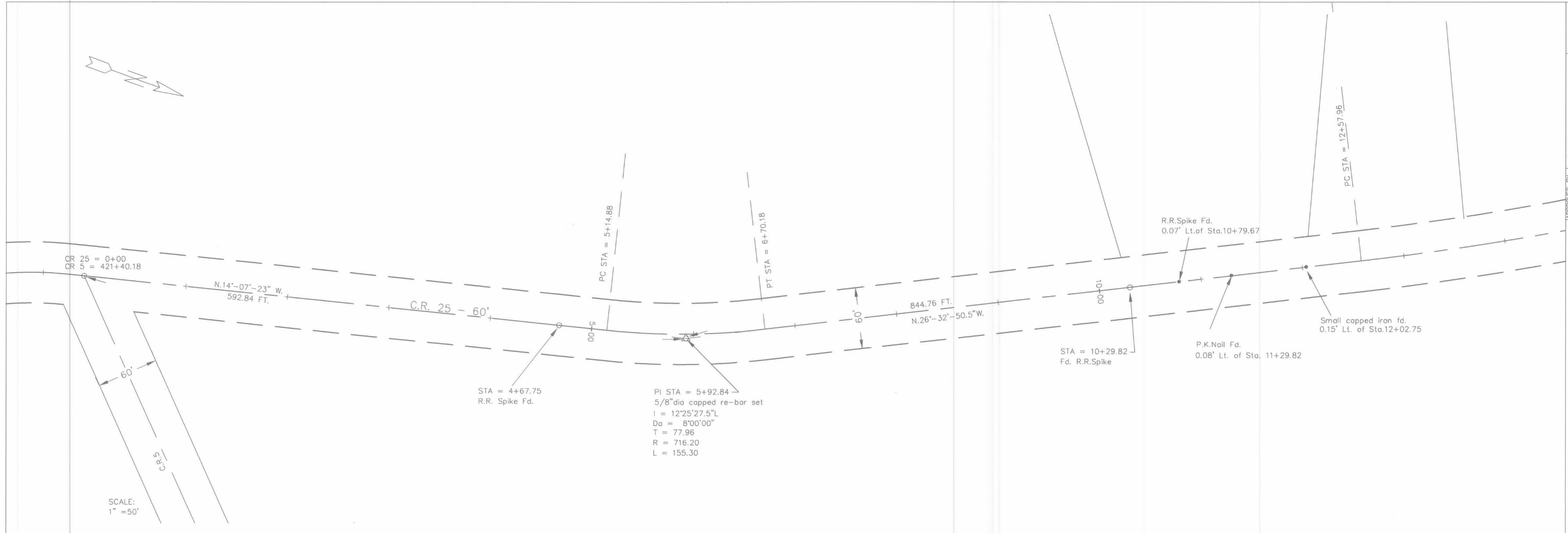
Logan County Road 5  
Monumentation



SCALES:  
1" = 50'

JAMES K. COX P.E., P.S.  
LOGAN COUNTY ENGINEER





SURVEYED BY:  
 Jennifer L. Ganson  
 ENGINEER'S OFFICE  
 Charles Nichols  
 JENNIFER L. GANSON  
 CHECKED BY:

APPROVED BY:  
 Jennifer L. Ganson  
 ENGINEER'S OFFICE

Logan County Road 25  
 Monumentation

JAMES K. COX P.E., P.S.  
 LOGAN COUNTY ENGINEER

WO# 0583  
 3/7

12-094-00-00-042

12-094-00-00-041

R.R. SPIKE FD.  
5.94' LT. OF C STA. 38+29.03

PI STA = 38+45.75  
5/8" dia. capped re-bar set  
I = 14'36"45"R  
Do = 8'00"00"  
T = 91.83  
R = 716.20  
L = 182.65

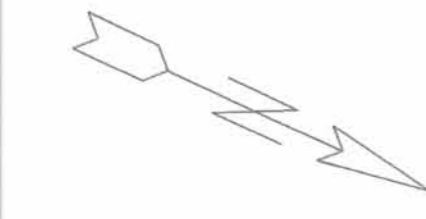
PI STA = 30+94.07  
1" dia. iron fd. with traces of brick (1' deep)  
I = 16'49"20"L  
Do = 8'00"00"  
T = 105.90  
R = 716.20  
L = 210.28

SCALE:  
1" = 50'

WO#  
0583

APPROVED BY: Engineer's Office  
Logan County  
Charles Nichols  
Bob Simmons  
DRAWN BY: Jennifer L. Ganson  
CHECKED BY:

Logan County Road 25  
Monumentation



12-093-00-00-039

P.I. STA. 38+45.75

STA = 49+14.17  
C.I. Monument Corner Fd.  
NO ANGLE  
(Ref. Sta. 210+79, pg. 10, Plan L-6)

PI STA = 45+45.53  
5/8" dia. capped re-bar set  
No Curve  
I = 0'01"15"L

old tract line

12-093-00-00-038

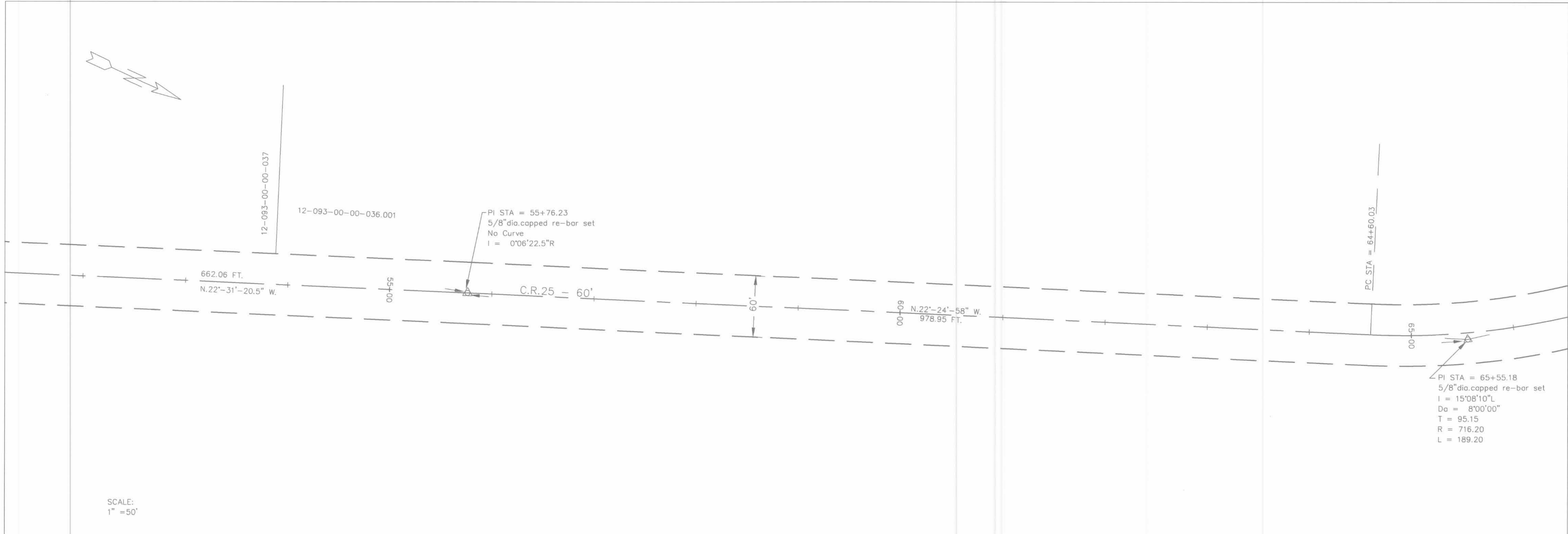
SCALE:  
1" = 50'

JAMES K. COX P.E., P.S.  
LOGAN COUNTY ENGINEER

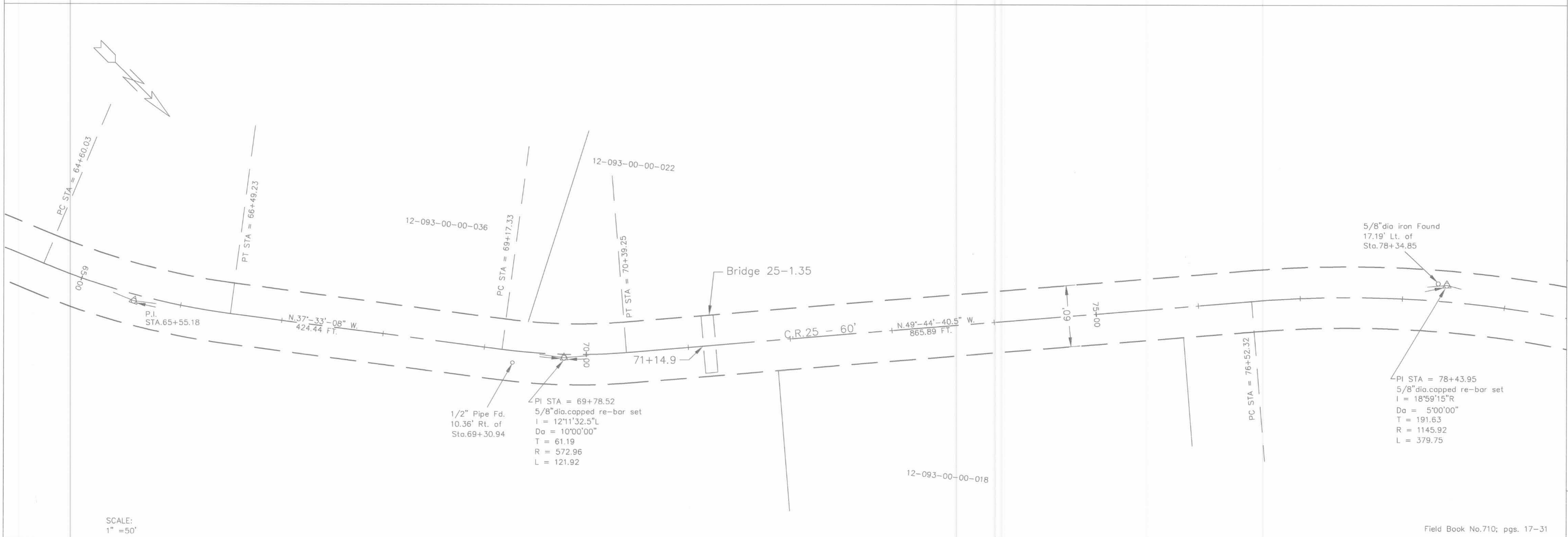
4  
7

Field Book No. 710; pgs. 17-31

C:\My Documents\roads\0925\0925.dwg Tue Apr 25 12:31:46 2000 Jennifer L. Ganson Engineering Tech. 2

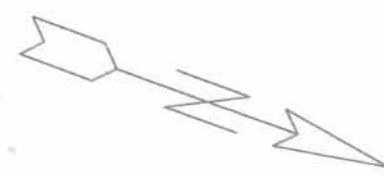


SCALE:  
1" = 50'



SCALE:  
1" = 50'

APPROVED BY: Logan County Engineer's Office Charles Nichols Bob Simmons	WO#	0583
	CHECKED BY:	Jennifer L. Ganson
Logan County Road 25 Monumentation		
JAMES K. COX P.E., P.S. LOGAN COUNTY ENGINEER		
5 7		
Field Book No.710; pgs. 17-31		



5/8" dia. iron Fd.  
17.19' Lt. of C Sta. 78+34.85

P.I.  
Sta. 78+43.95

00+08

PT STA = 80+32.07

699.64 FT.  
N.30°-45'-25.5" W.

C.R. 25 - 60'

00+58

PC STA = 84+88.24

PT STA = 86+19.16

PI STA = 85+40.08  
5/8" dia. capped re-bar set  
I = 25°44'47.5"R  
Do = 16'00"00"  
T = 81.84  
R = 358.10  
L = 160.92

60'

751.00 FT.  
N.5°-00'-38" W.

00+06

12-093-00-00-024

SCALE:  
1" = 50'



12-093-00-00-024

12-093-00-00-015

12-093-00-00-016

12-093-00-00-015

00+96

626.15 FT.  
N.4°-04'-43" W.

C.R. 25 - 60'

100+00

60'

896.15 FT.  
N.5°-32'-00.5" W.

00+50

PI STA = 92+88.32  
R.R. Spike Fd.  
Replaced with 5/8" dia. capped re-bar  
I = 0°55'55"R  
No Curve

Sta. 93+38.29  
R.R. Spike Fd.

part of 12-093-00-00-015

PI STA = 99+14.47  
5/8" dia. capped re-bar set  
No Curve  
I = 1°27'17.5"L

SCALE:  
1" = 50'

Field Book No. 710; pgs. 17-31

WO#  
0583

APPROVED BY: SURVEYED BY: Logan County Engineer's Office  
Curt Dill, Bob Simmons  
DRAWN BY: Jennifer L. Ganson

Logan County Road 25  
Monumentation

JAMES K. COX P.E., P.S.  
LOGAN COUNTY ENGINEER

6  
7

X-25

X-25



CURVE DATA  
 P.I. Sta. 146+76.68  
 $\Delta = 8^{\circ}-02'-18''$   
 $Dc = 3^{\circ}-30'-00''$   
 $R = 1637.02$   
 $Lc = 29.67'$   
 $Ls = 200.00'$   
 $Ts = 215.08'$   
 $o = 3^{\circ}-30'-00''$   
 $Xc = 199.93'$   
 $Yc = 4.07'$   
 $L.T. = 133.36'$   
 $S.T. = 66.69'$   
 T.S. Sta. 144+61.60  
 S.C. Sta. 146+61.60  
 C.S. Sta. 146+91.27  
 S.T. Sta. 148+91.27

Sta. 0+00 C.R. 25  
 Sta. 146+72.36 S.R. 540

T.S.

S.R. 540

S.C.

C.S.

0+36.34  
 3/4" dia. iron fd.  
 re-placed with  
 3/4" dia. re-bar

C.R. 25 - 60'

N. 23°-01'-59.5"W.

P.I.  
 14+60.66  
 3/4" dia Iron Fd.  
 (Shown as Sta. 14+62.0  
 in F.B. 575, pg. 29)

R.R. Spike set  
 Sta. 110+61.91 C.R. 25  
 Sta. 1+97.91 S.R. 540

S.T.  
 0+97.75 Ahead  
 148+91.27 Back

Intersection C.R. 25 Extended  
 With N. R/W line of S.R. 540  
 5/8" dia. capped re-bar set

P.O.T.  
 STA. 108+10.62  
 5/8" dia. capped re-bar set

896.15 FT.  
 N. 5°-32'-00.5"W.

C.R. 25 - 60'

251.29'

110+00

30.28'

60'

105+00

Sta. 4+00  
 P.K. nail Fd.

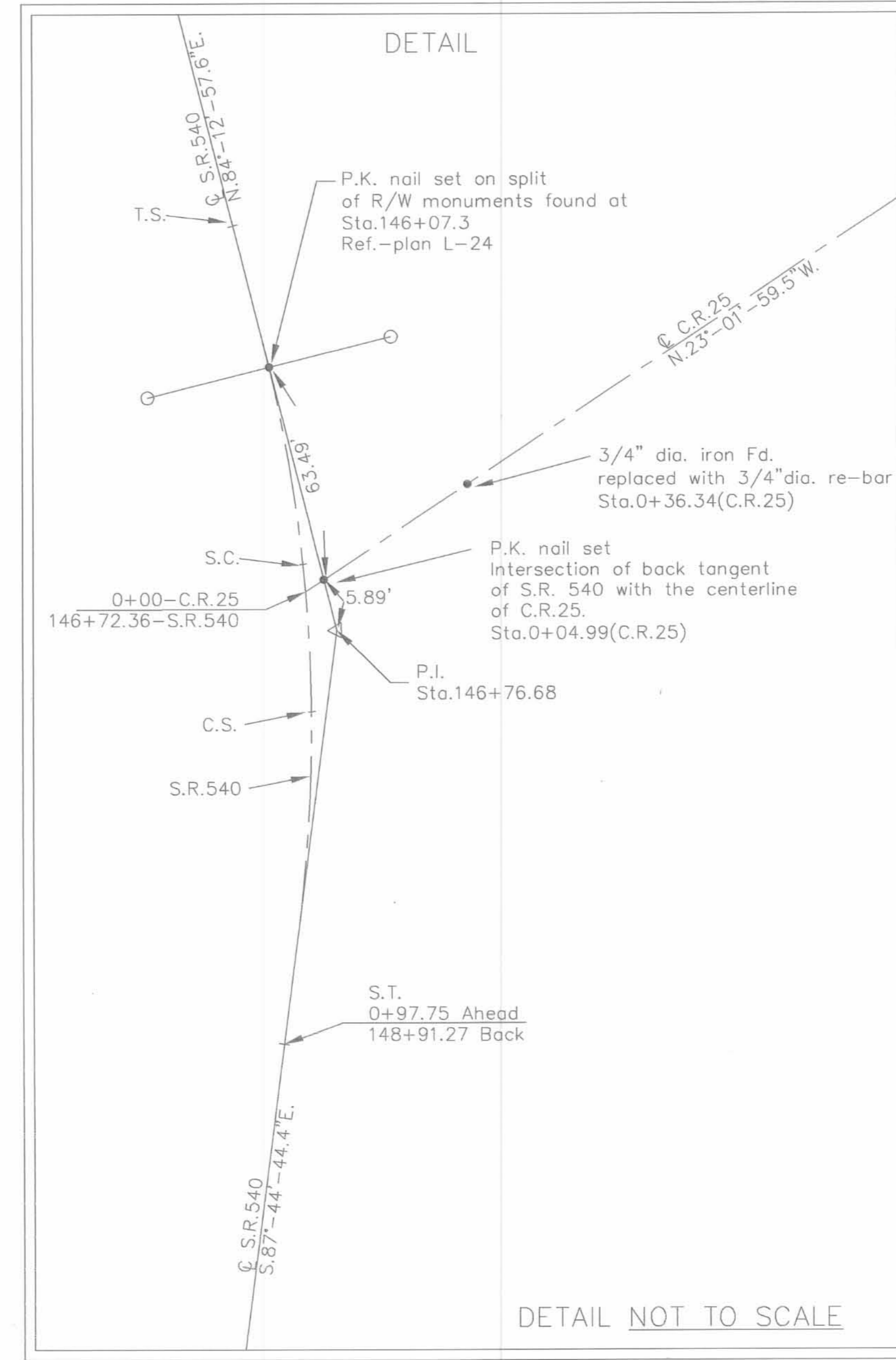
Sta. 5+00  
 P.K. nail Fd.

Sta. 5+99.96  
 P.K. nail Fd.

Sta. 7+77.40  
 R.R. Spike Fd.  
 (Shown as Sta. 7+74.5  
 in F.B. 588, pg. 8)

S.R. 540

S. 87°-44'-44.4"E.



SCALE:  
 1" = 50'

APPROVED BY: [Signature]  
 Logan County Engineer's Office  
 Checked By: [Signature]  
 Drawn By: Jennifer L. Ganson

Logan County Road 25  
 Monumentation

JAMES K. COX P.E., P.S.  
 LOGAN COUNTY ENGINEER

7  
 7