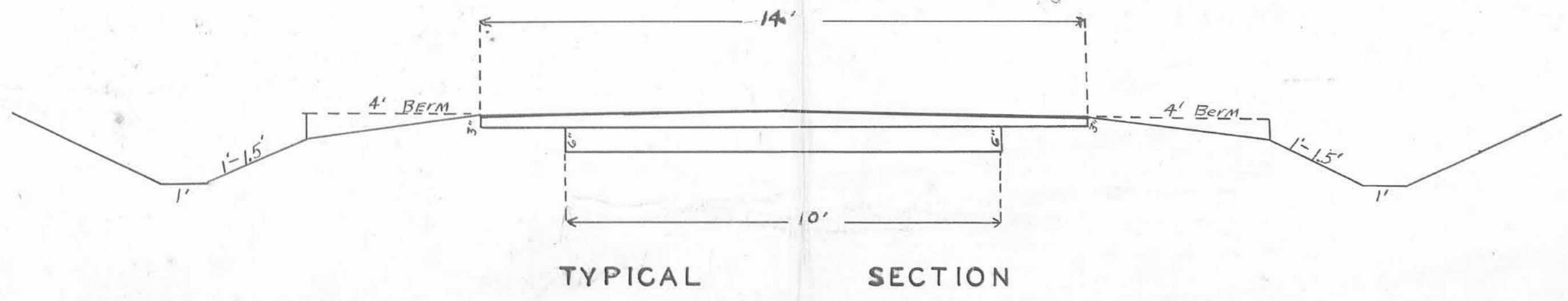
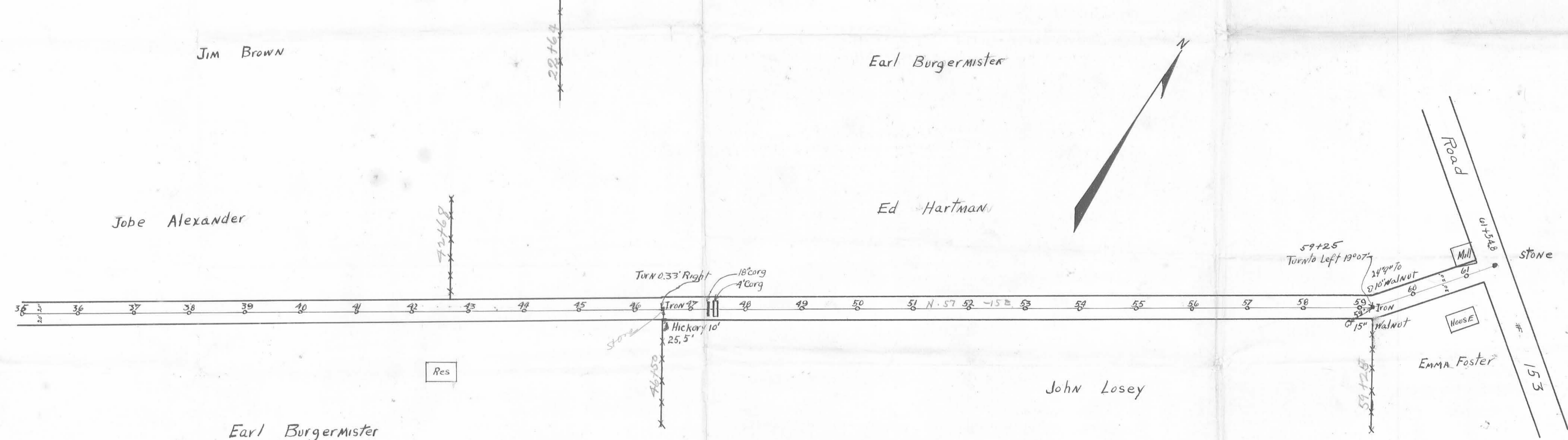
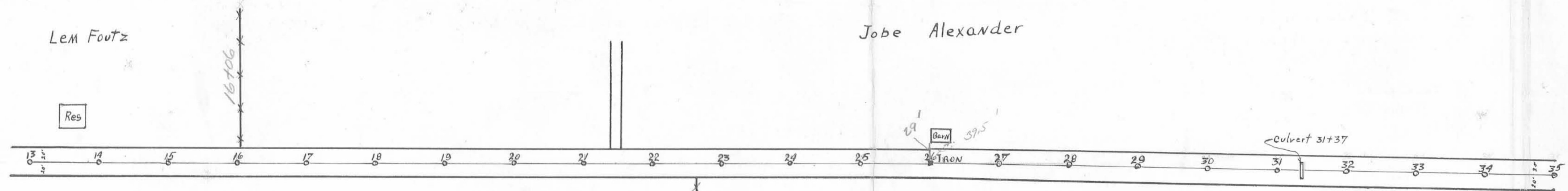
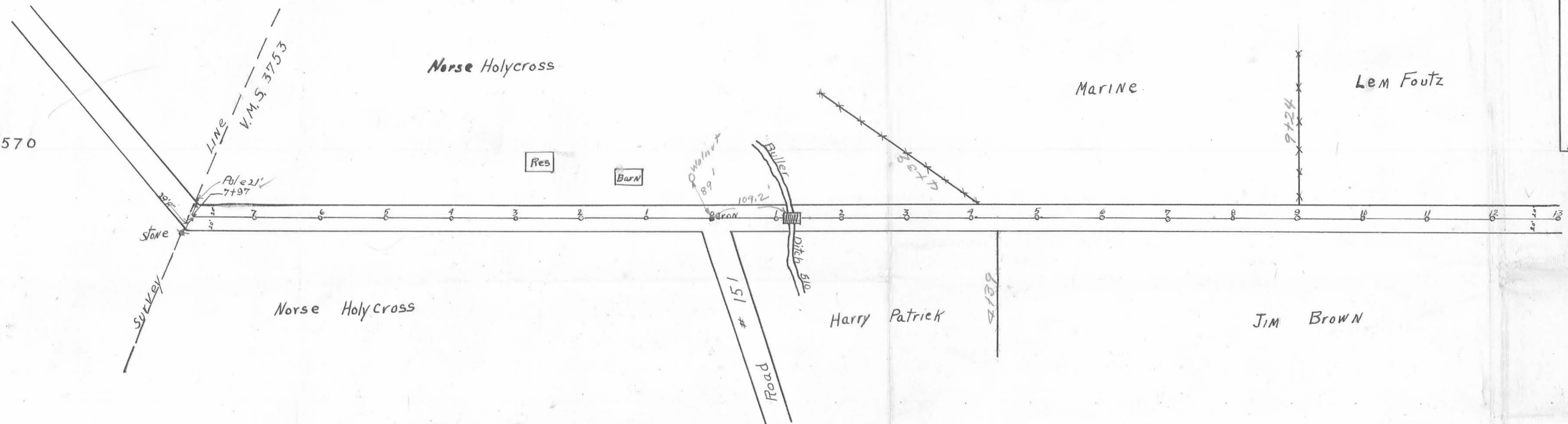


ROAD 29  
 ZANE TOWNSHIP  
 WIDTH 40'  
 Book 552  
 Scale 100'-1"

1  
3

1294  
 INDEXED ON MAP

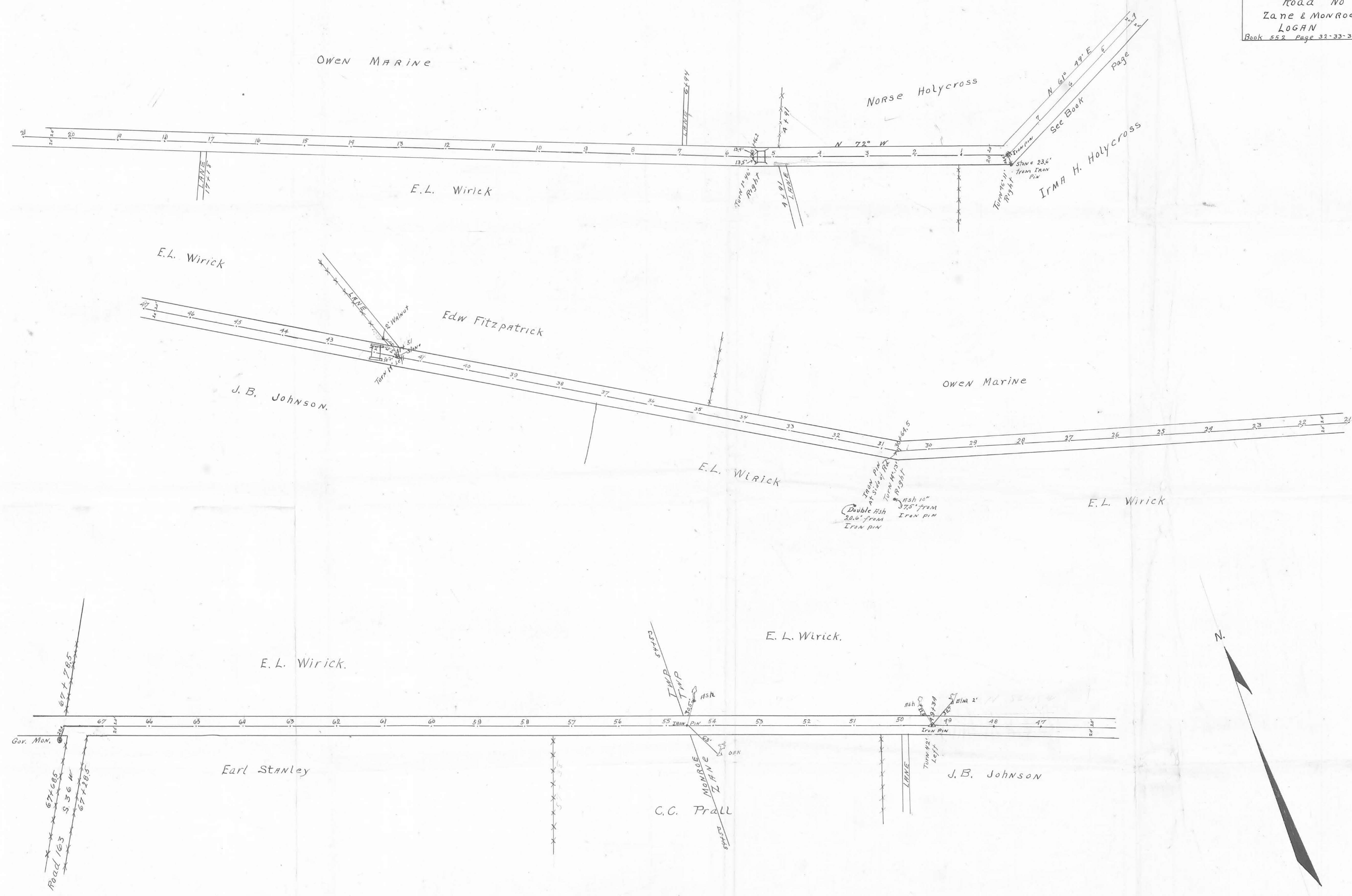
K.M.S. 4570

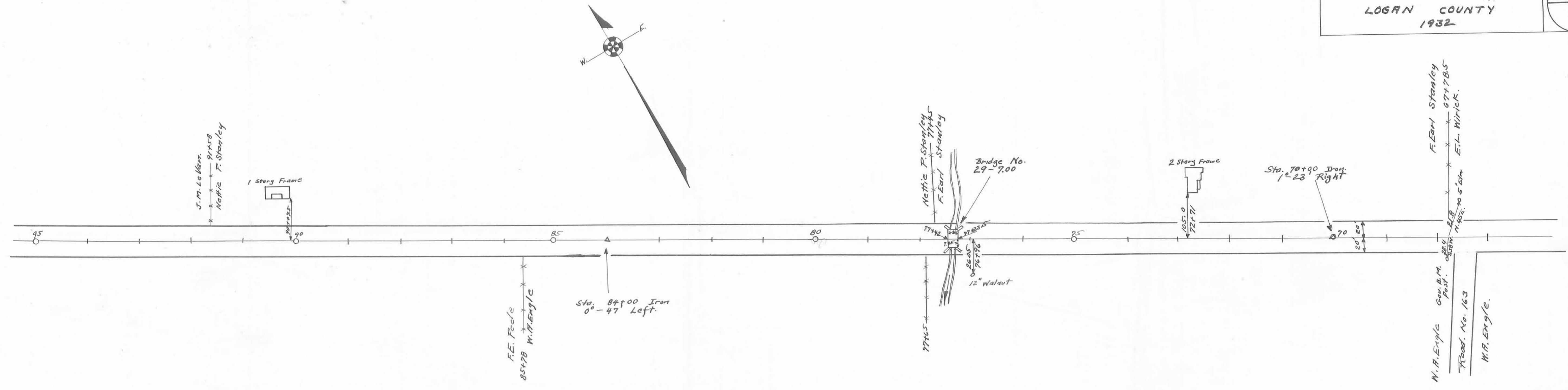


Field Notes Book 552  
 Pages 35 to 37

X-29B  
 Drawn by JAMK

1294  
 INDEXED ON MAP





Survey Notes in Logan County  
 Surveyors Book No. 560 Pages 50 to 53  
 Stakes Placed 20' from  $\frac{E}{2}$  for a 40' Road.

