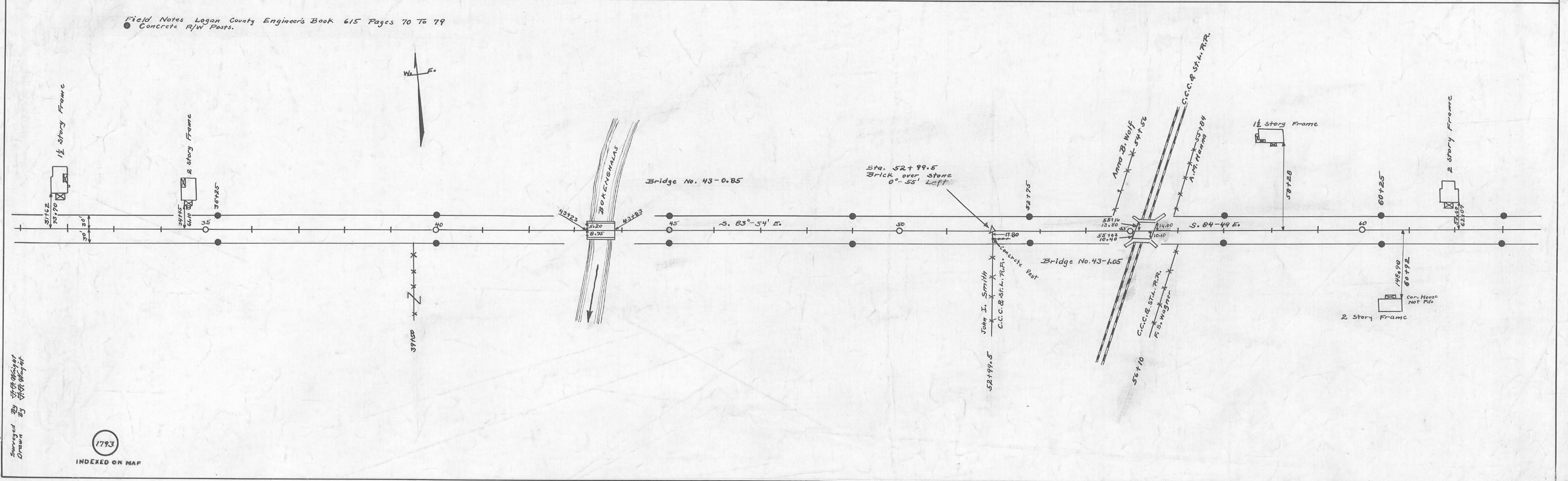


60' Commissioners Journal Vol. 3 Page 101 (1832)

Field Notes Logan County Engineer's Book 615 Pages 70 To 79
● Concrete R/W Posts.



1793

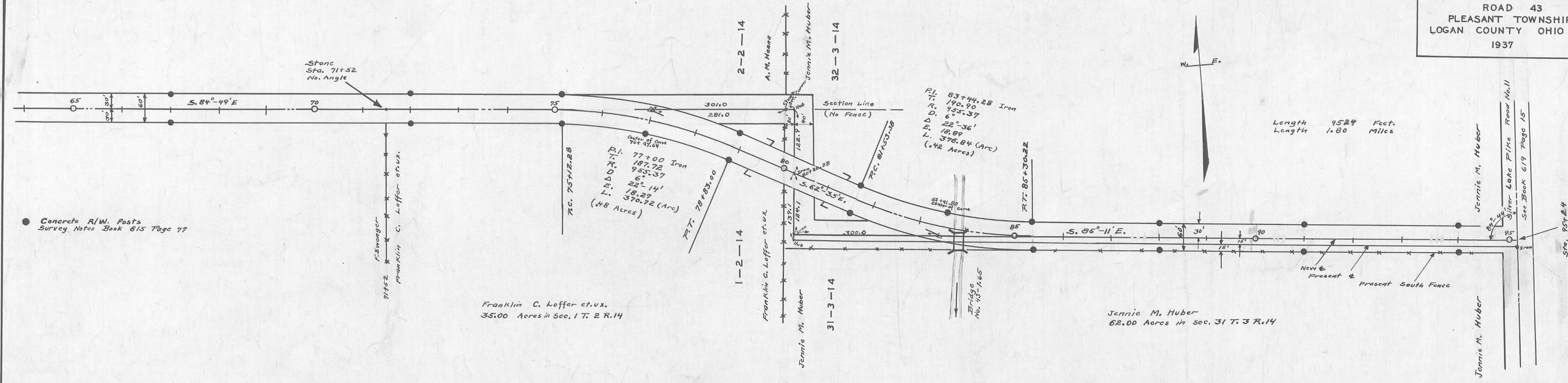
INDEXED ON MAP

ROAD 43

X-43

X-43

Surveyed by
Drawn by



Concrete R/W. Posts
Survey Notes Book 615 Page 77

Franklin C. Loffer et ux.
35.00 Acres in Sec. 1 T. 2 R. 14

Jennie M. Huber
62.00 Acres in Sec. 31 T. 3 R. 14

We the undersigned, owners of the above described property, dedicate the same to public purposes consistent therewith clear of all obstructions which interfere with the improvement and for maintenance of the highway at the time of improvement.

OWNERS
Franklin C. Loffer
Lulu Loffer
Jennie M. Huber

WITNESSES
James H. Ricks
James Brunker
Willard Loffer
Wilson S. Walter

Approved as to owners this 19 day of Nov. 1937
W. H. Wright
Tax map Draftsman

Office of the Logan County Commissioners.
This plat has been approved and accepted by us this 22 day of Nov. 1937

P. H. Mortimer
W. J. Hughes
R. A. Stout
Board of County Commissioners.

Approved and accepted by me this 19 day of Nov. 1937
W. H. Zruar
County Engineer.

County of Logan
State of Ohio, SS.
On this 19 day of Nov. 1937, Before me a County Engineer and for said County and State personally appeared Jennie M. Huber, Franklin C. Loffer, Lulu Loffer who acknowledged the signing of this plat to be their Voluntary act and deed for the purposes herein mentioned. Witness my hand and seal this 19 day of Nov. 1937.
W. H. Zruar
County Engineer

ROAD 43

X-43

Surveyed
Drawn
By
W. H. Wright

1793
INDEXED ON MAP

X-43