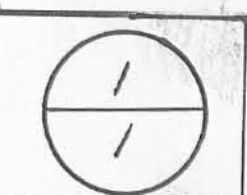


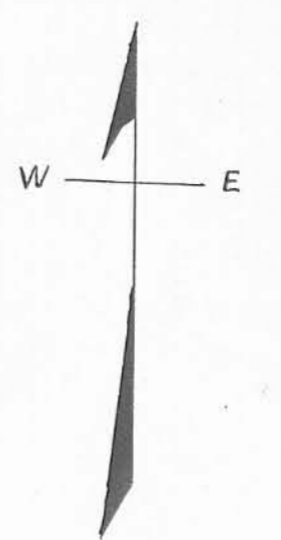
SECTION CORNERS No ROAD # 45
 UNION TOWNSHIP
 LOGAN COUNTY
 1930



See Book 516 PAGE 72-75
 " 558 " 57
 SURVEYORS RECORD BOOK C PAGE 54
 ROAD RECORD 1 PAGE 318
 " " 2 " 580

(1321)

INDEXED ON MAP

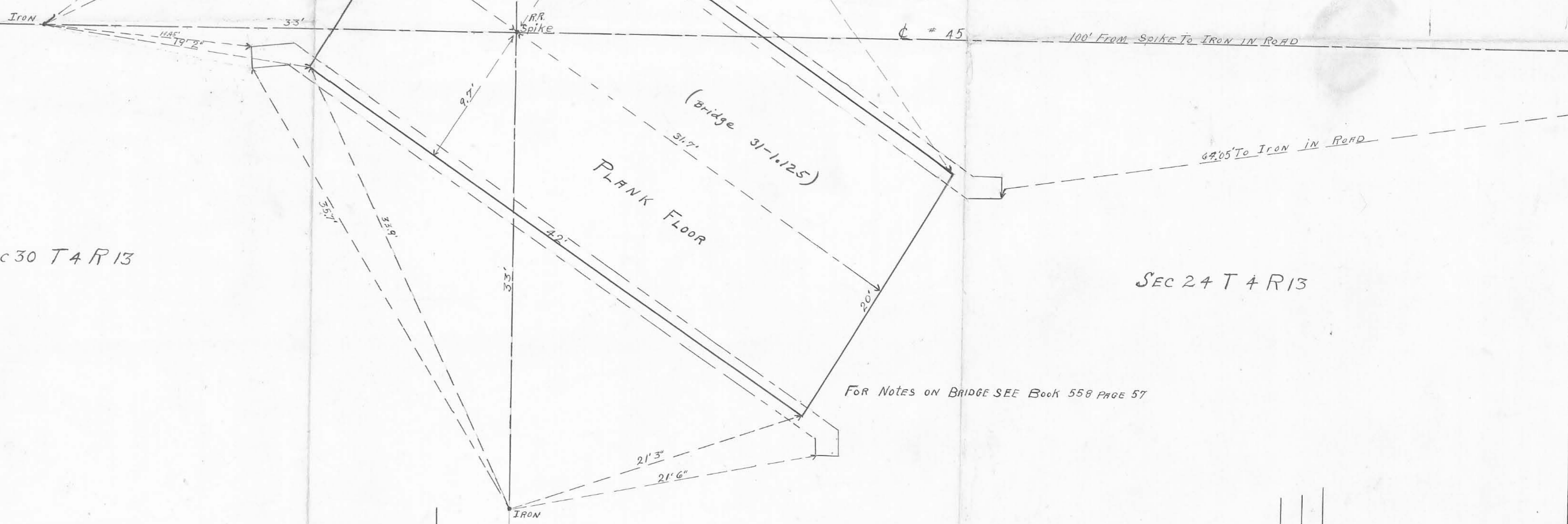


SEC 25 T 3 R 14

SEC 19 T 3 R 14

SEC 30 T 4 R 13

SEC 24 T 4 R 13

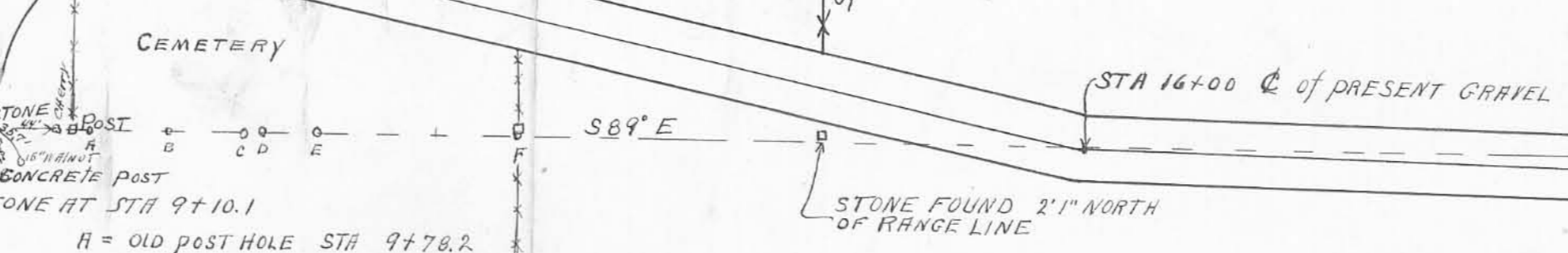
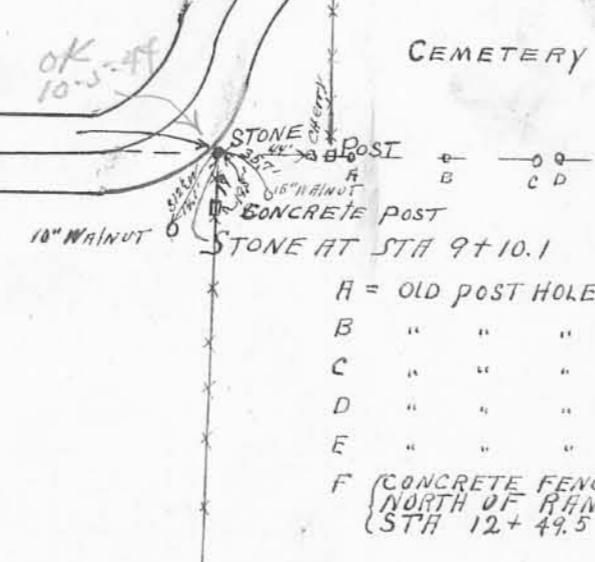
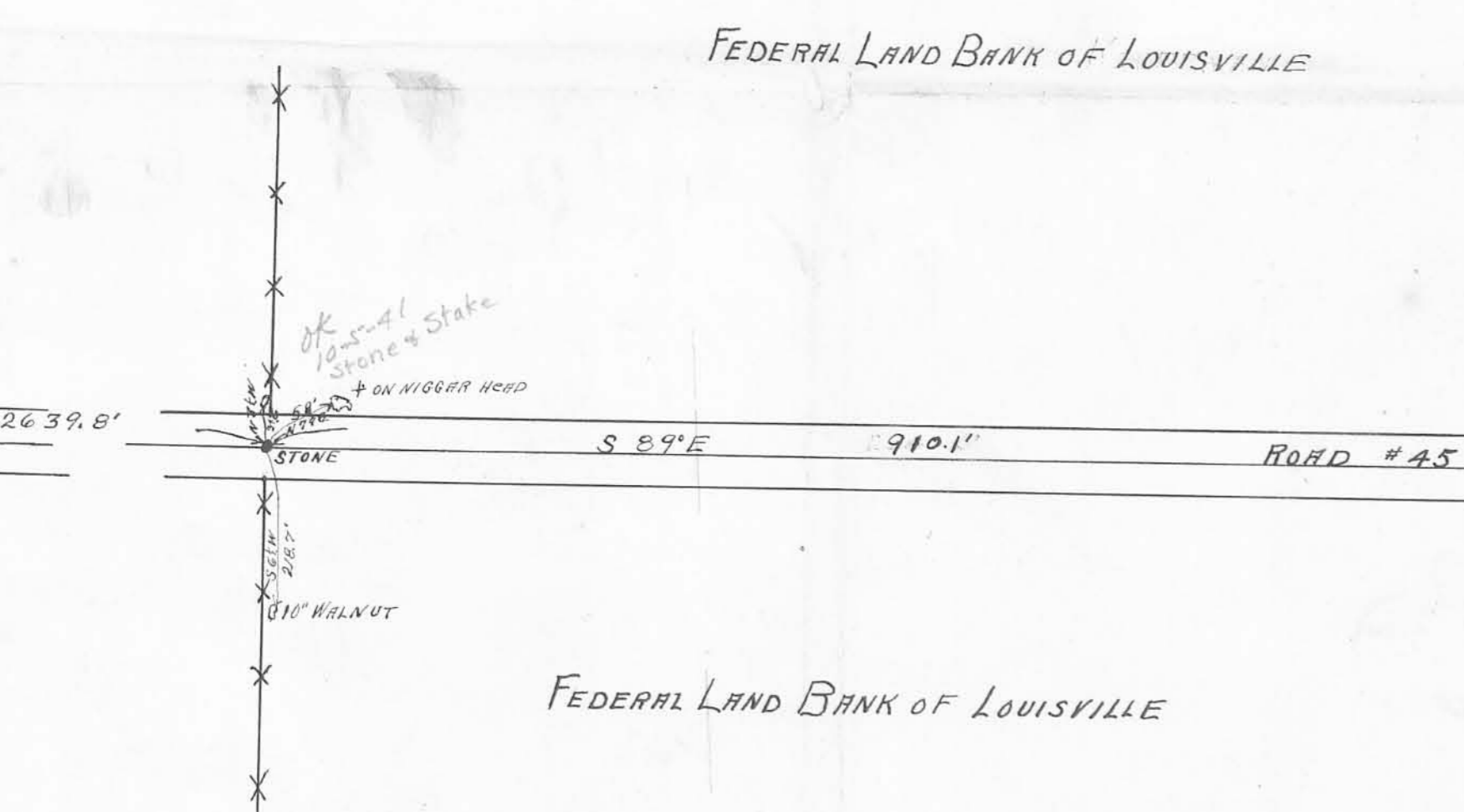


FOR NOTES ON BRIDGE SEE BOOK 558 PAGE 57

FEDERAL LAND BANK OF LOUISVILLE

LOTTIE ROBINSON

SEC 51 T 3 R 14
 ROAD # 33
 SEC 25 T 3 R 14
 SEC 36 T 4 R 13
 ROAD
 SEC 30 T 4 R 13



STA 23+22.0 S.W. of HOUSE AND NORTH SIDE of 30' ELM
 STA 23+67 S.E. of HOUSE
 STA 26+90.6 SPIKE ON BRIDGE AND SECTION LINE
 SEE DETAIL of BRIDGE FOR SEC CORNERS

WB MOFFIT ENY

WB MOFFIT

JESSIE A YODER

X-45

FILE WITH ROAD # 45
 DRAWN BY J.A.M.M.K.