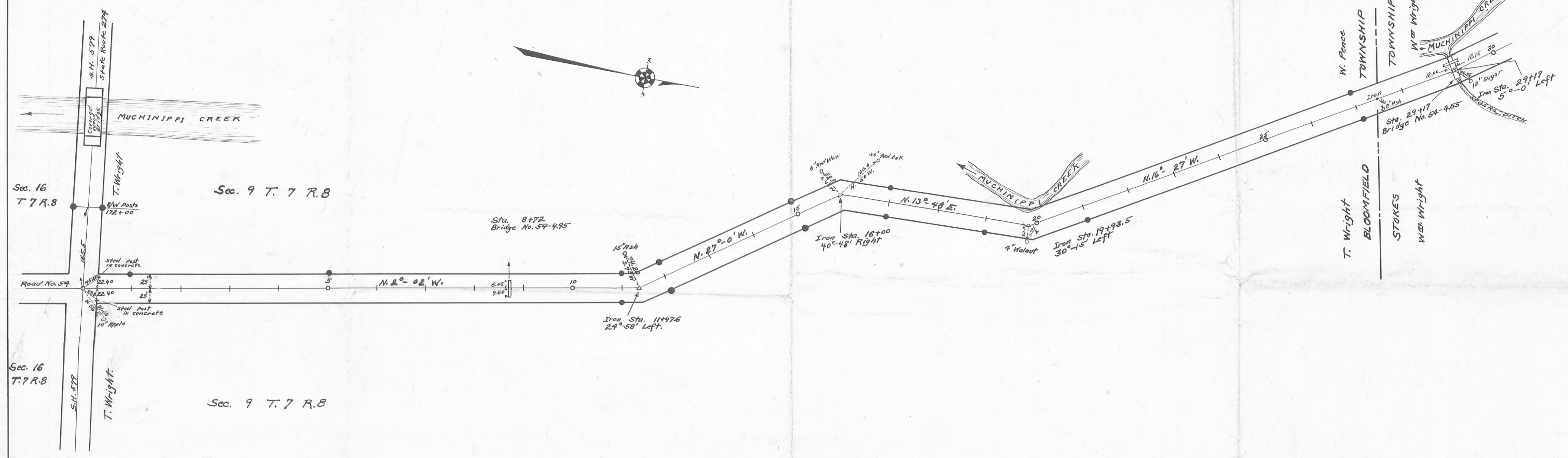
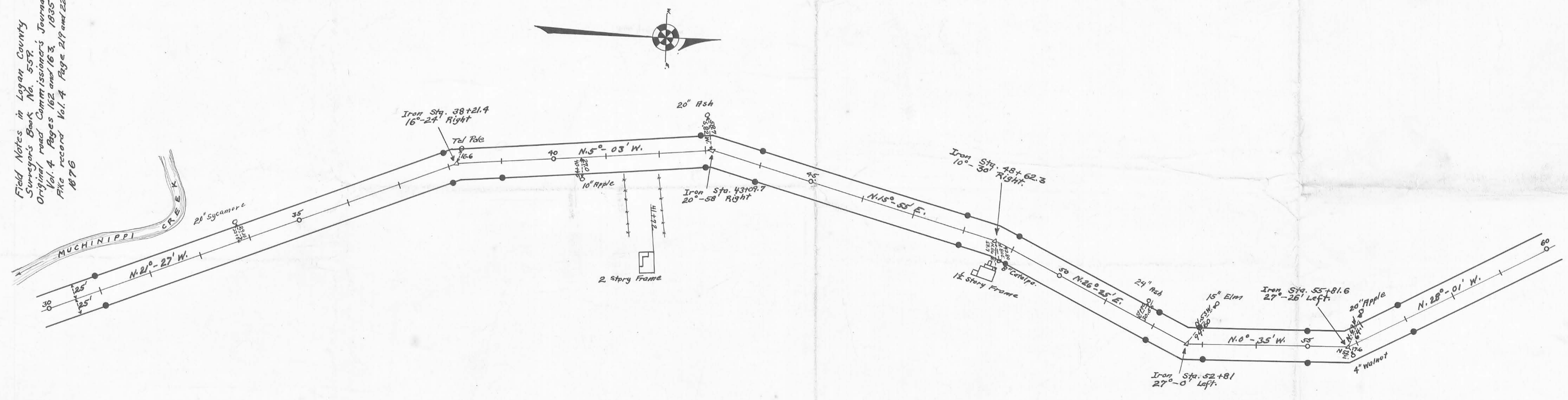


● INDICATES CONCRETE RIGHT OF WAY POSTS.

ROAD 54



Field Notes in Logan County
Surveyor's Book No. 557.
Original road Commissioner's Journal
Vol. 4 Pages 162 and 163, 1935
File record Vol. 4 Page 219 and 220
1876



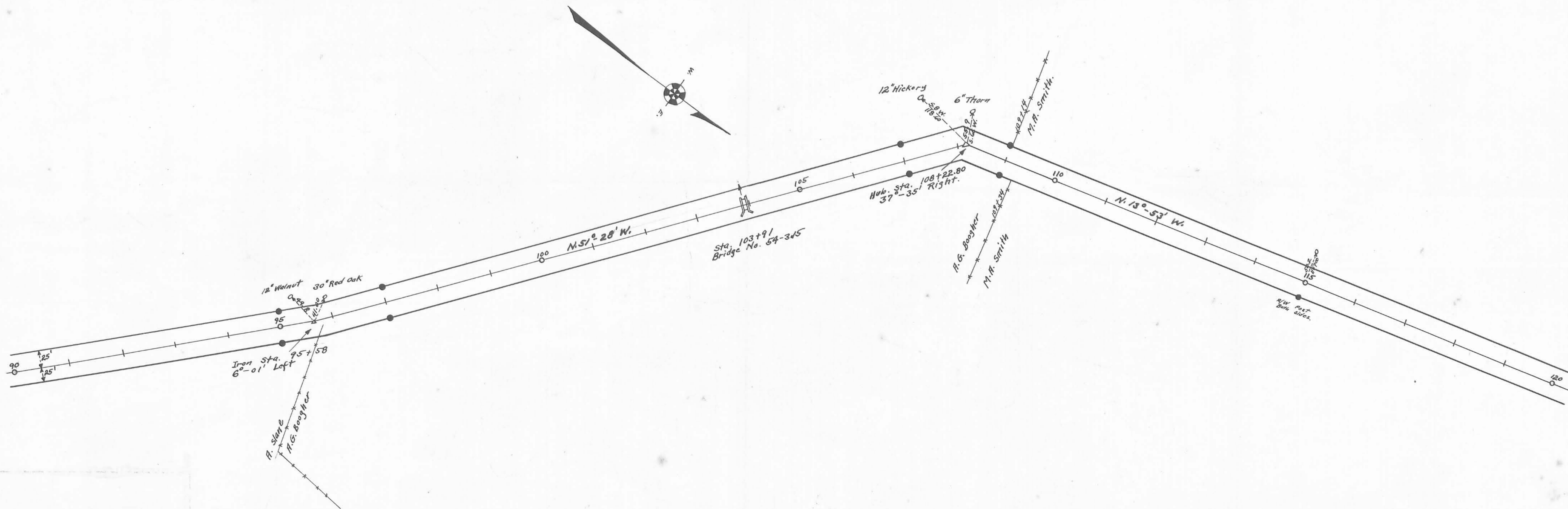
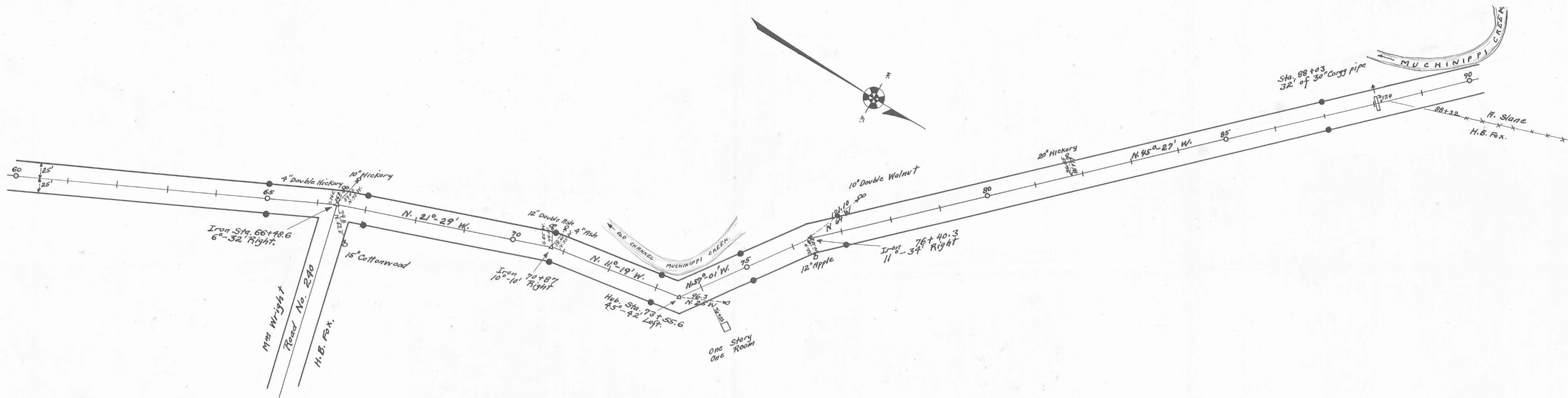
X-54

X-54

● INDICATES CONCRETE RIGHT OF WAY POSTS.

ROAD NO. 54
STOKES TOWNSHIP
LOGAN COUNTY

2
5

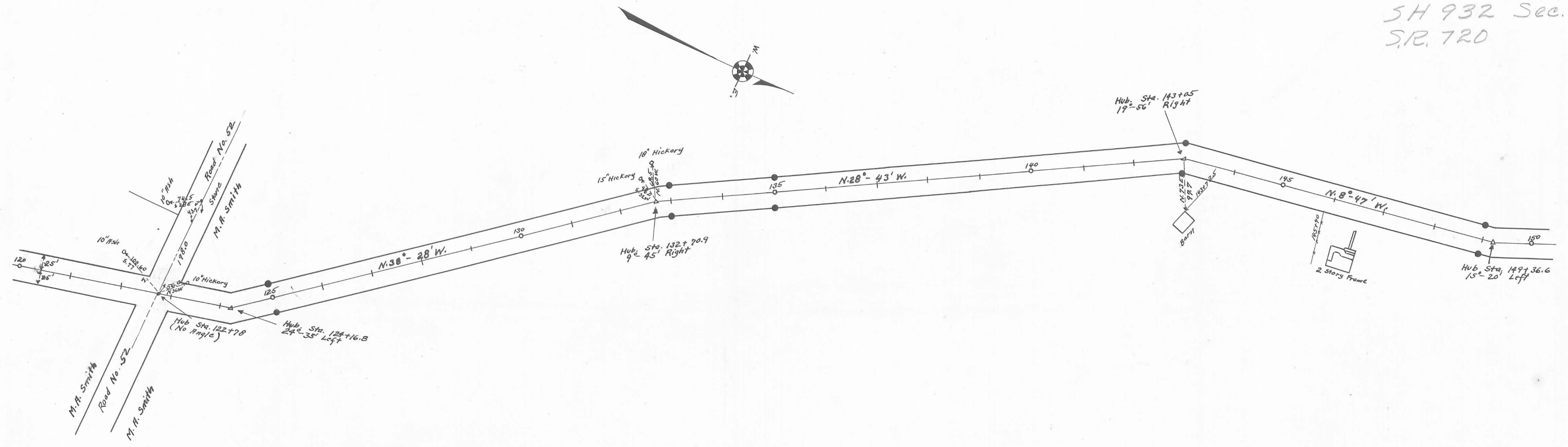


Field Notes in Logan County
Surveyors Book No. 559.

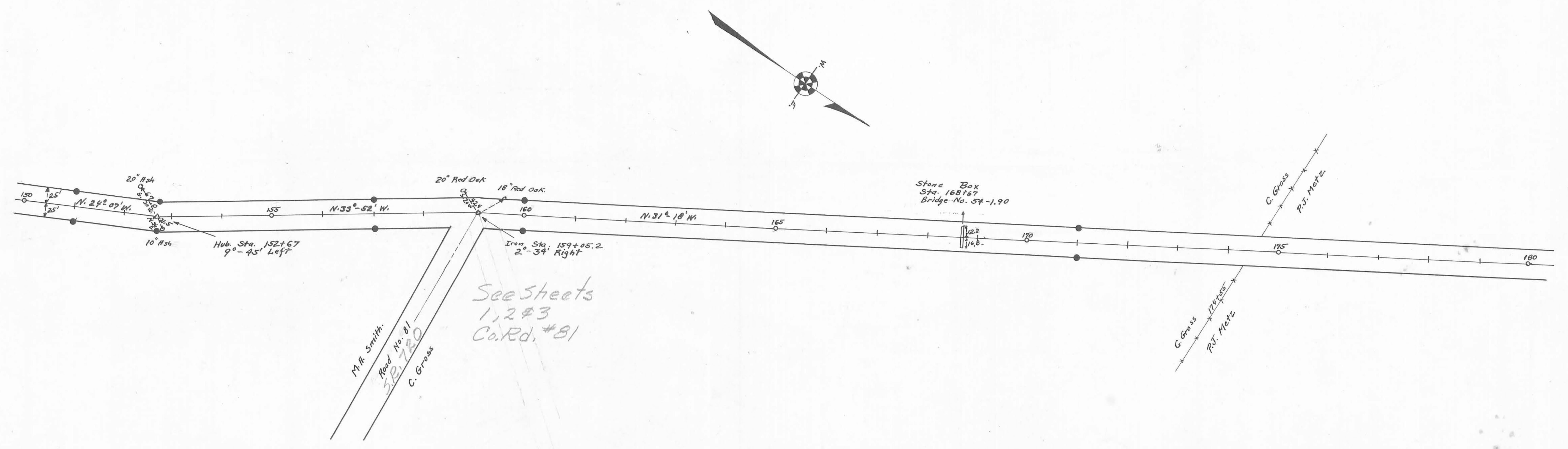
1367
ORDERED ON MAP

SH 932 Sec. 1
 S.R. 720

● INDICATES CONCRETE RIGHT OF WAY POSTS.



Field Notes in Logan County
 Surveyor's Book 559

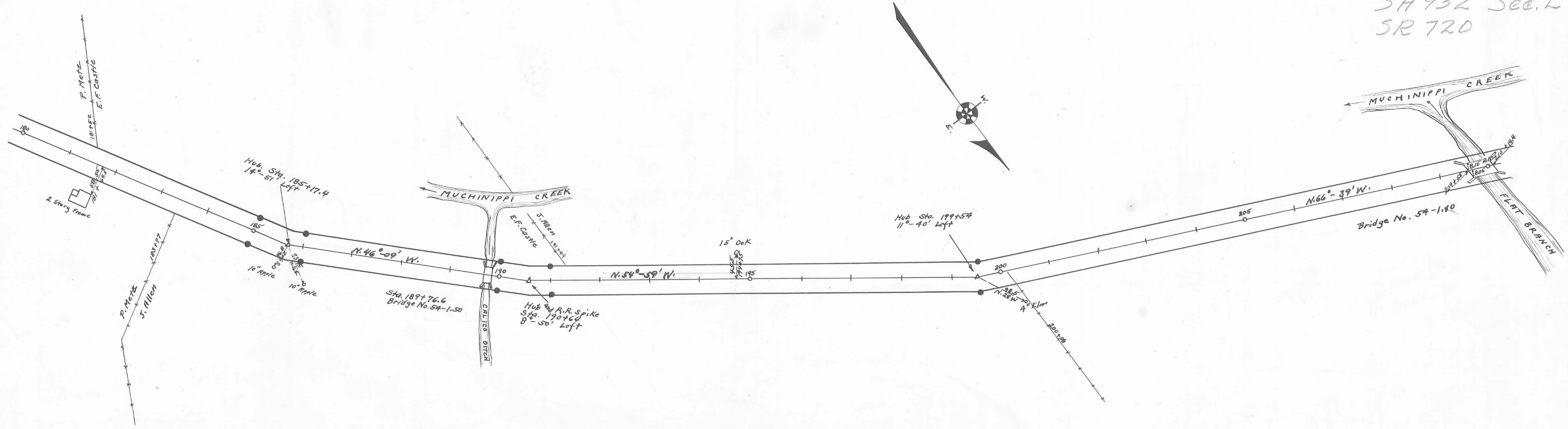


● INDICATES CONCRETE RIGHT OF WAY POSTS.

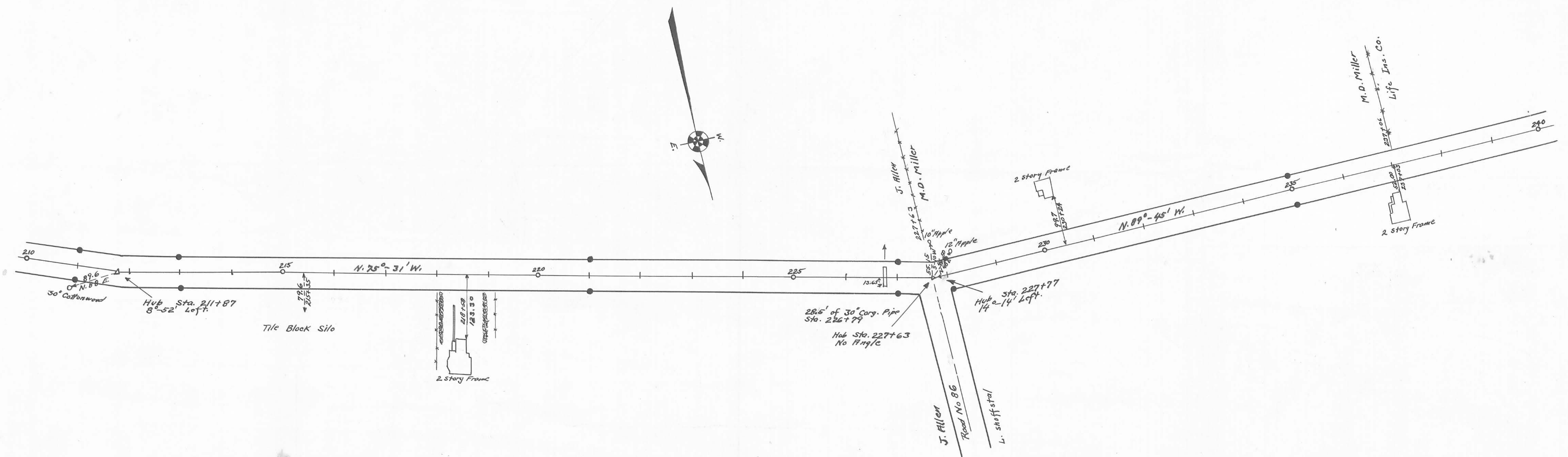
ROAD NO. 54
STOKES TOWNSHIP
LOGAN COUNTY

4
5

SH 932 Sec. L
SR 720



Field Notes in Logan County
Surreys Book 559

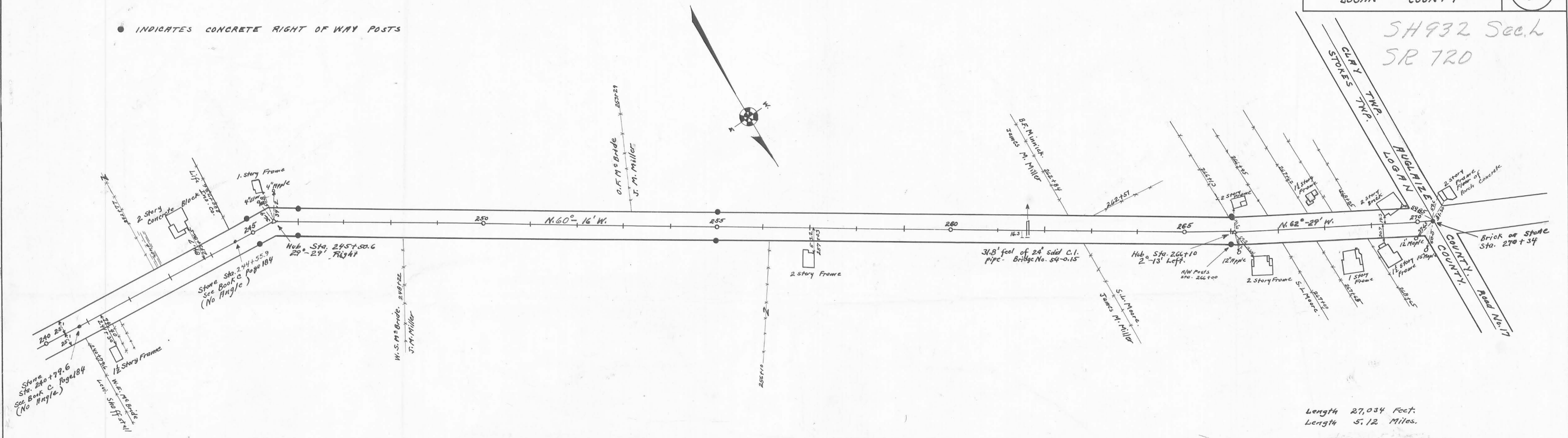


1932
P. Metz

INDEXED ON MAP

SH 932 Sec. 4
SR 720

● INDICATES CONCRETE RIGHT OF WAY POSTS



Length 27,034 Feet.
Length 5.12 Miles.

Field Notes in Logan County
Surveyors' Book No. 559