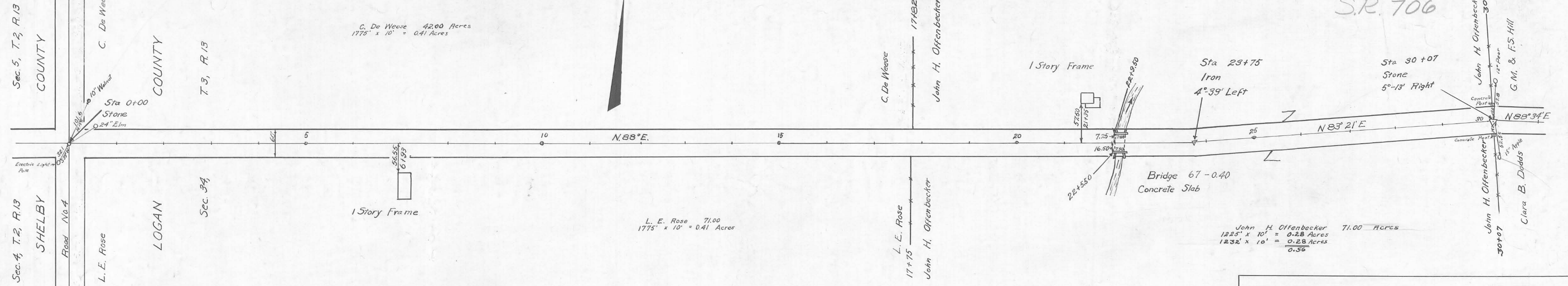
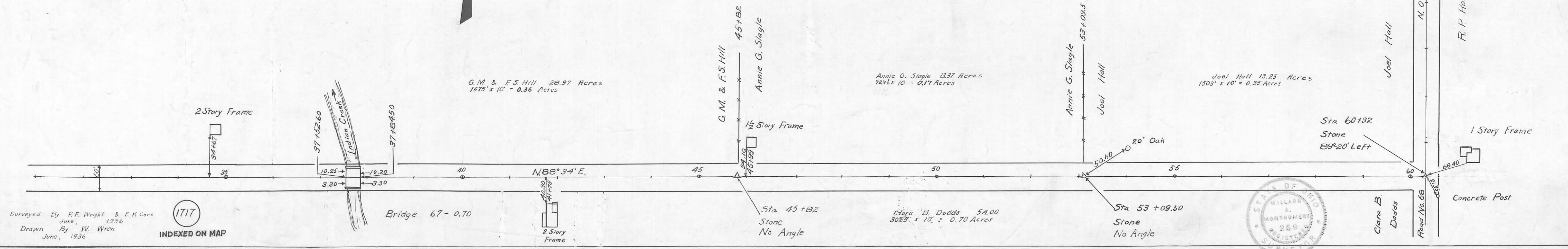
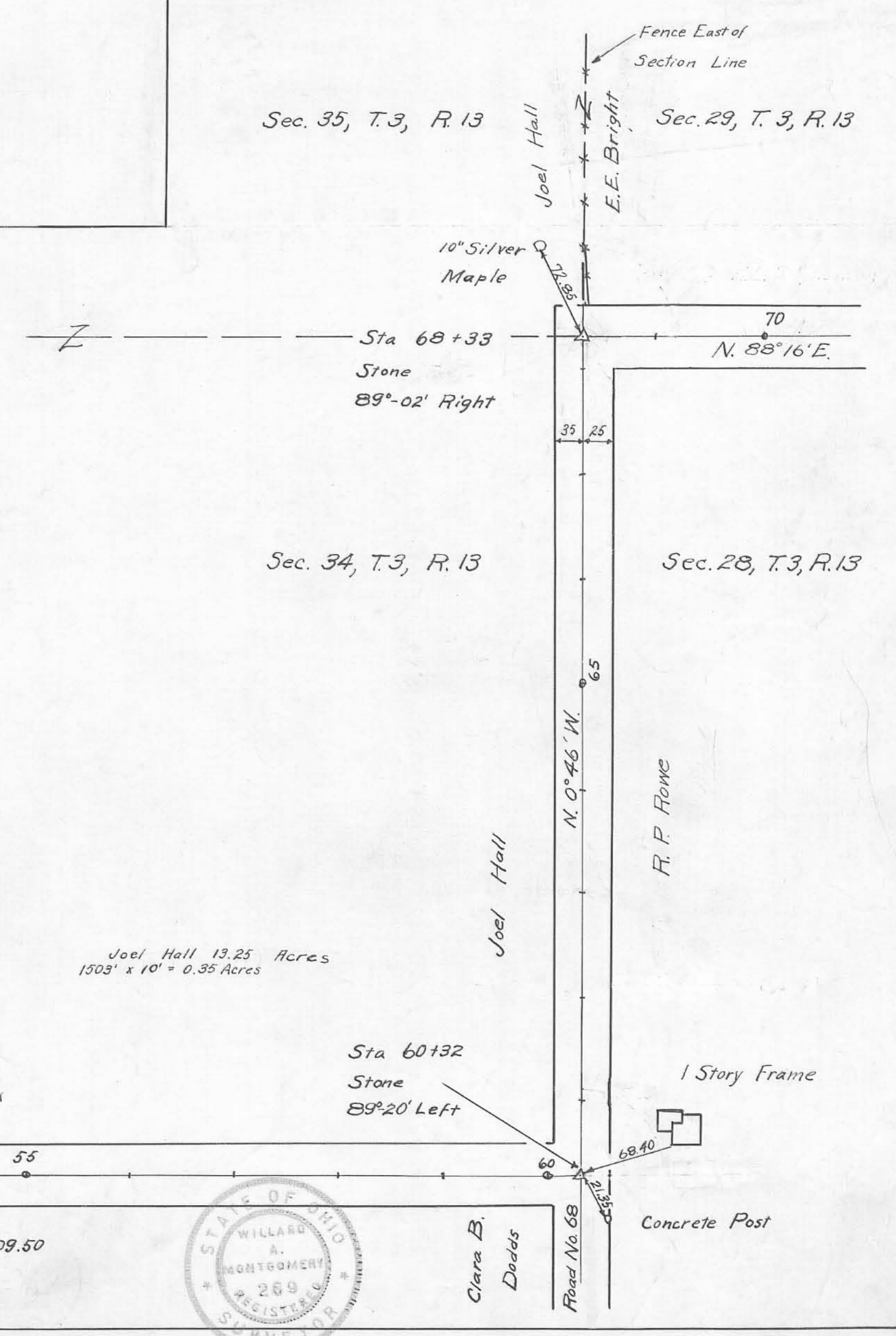


SH 865 Sec "B"  
S.R. 706



Present Right of Way 40' and 50' Proposed 60'  
To be obtained by Logan County Commissioners  
Commission View June, 20, 1936  
Commission Hearing June 27, 1936  
Commission Hearing on Damages July 27, 1936

Width 40' Commissioners Journal, Vol. 9, Page 151 and 294 (1850)  
Miami Twp. Pike Record No. 3 Page 51, No width given (1866)  
Sta 60+32 to 68+33 is part of Indian Creek Pike and is 50' wide.  
Pike Record 3, Page 507 (1874)  
Field Notes Logan County Surveyor's Book 596, Pages 45 to 56.



Surveyed By F.F. Wright & E.K. Core  
June, 1936  
Drawn By W. Wren  
June, 1936  
INDEXED ON MAP  
1717

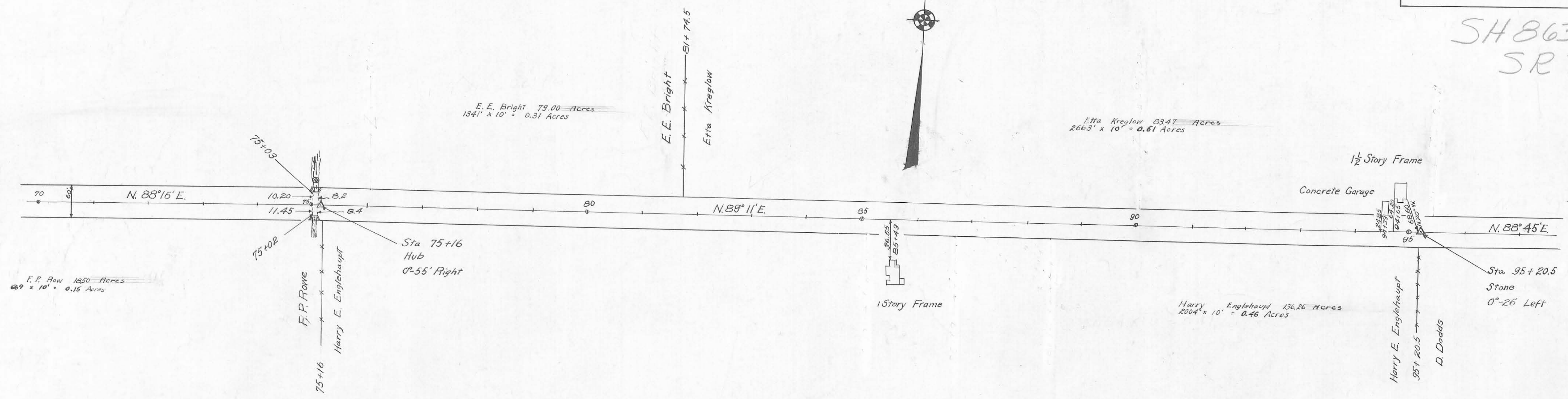


ROAD 67

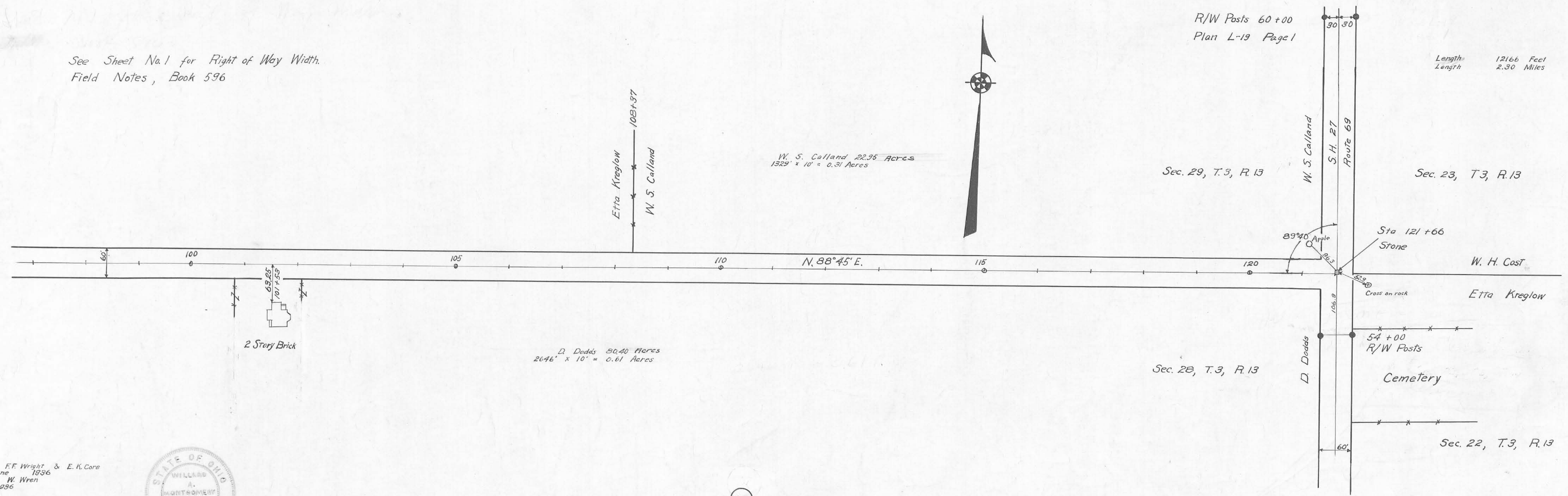
X-67

X-67

SH 863 Sec "B"  
SR 706



See Sheet No. 1 for Right of Way Width.  
Field Notes, Book 596



Surveyed By F.F. Wright & E.K. Core  
June 1936  
Drawn By W. Wren  
June 1936



1717  
INDEXED ON MAP

X-17

X-67