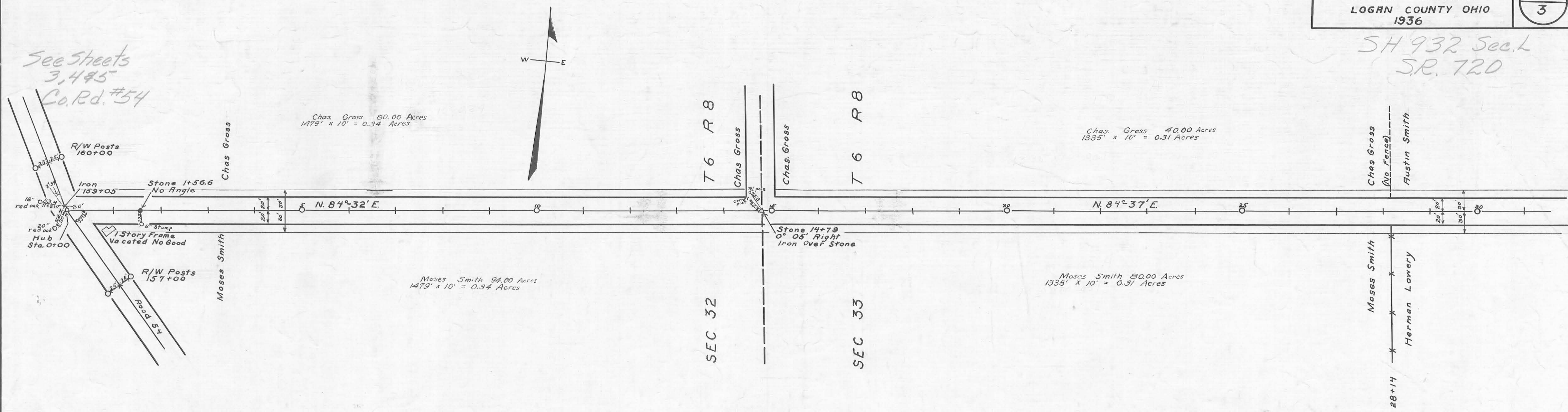
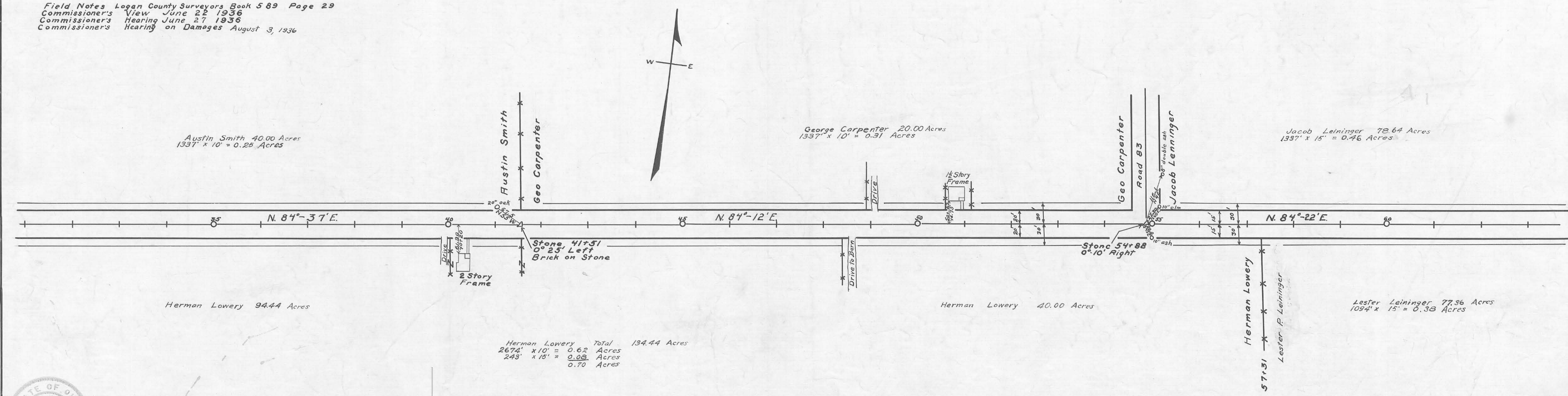


SH 932 Sec. 2
S.R. 720

See Sheets
3, 4 & 5
Co. Rd. #54



Field Notes Logan County Surveyors Book 5 89 Page 29
Commissioner's View June 22 1936
Commissioner's Hearing June 27 1936
Commissioner's Hearing on Damages August 3, 1936



Herman Lowery Total 134.44 Acres
2674' x 10' = 0.62 Acres
243' x 15' = 0.08 Acres
0.70 Acres

ROAD 81

X-81

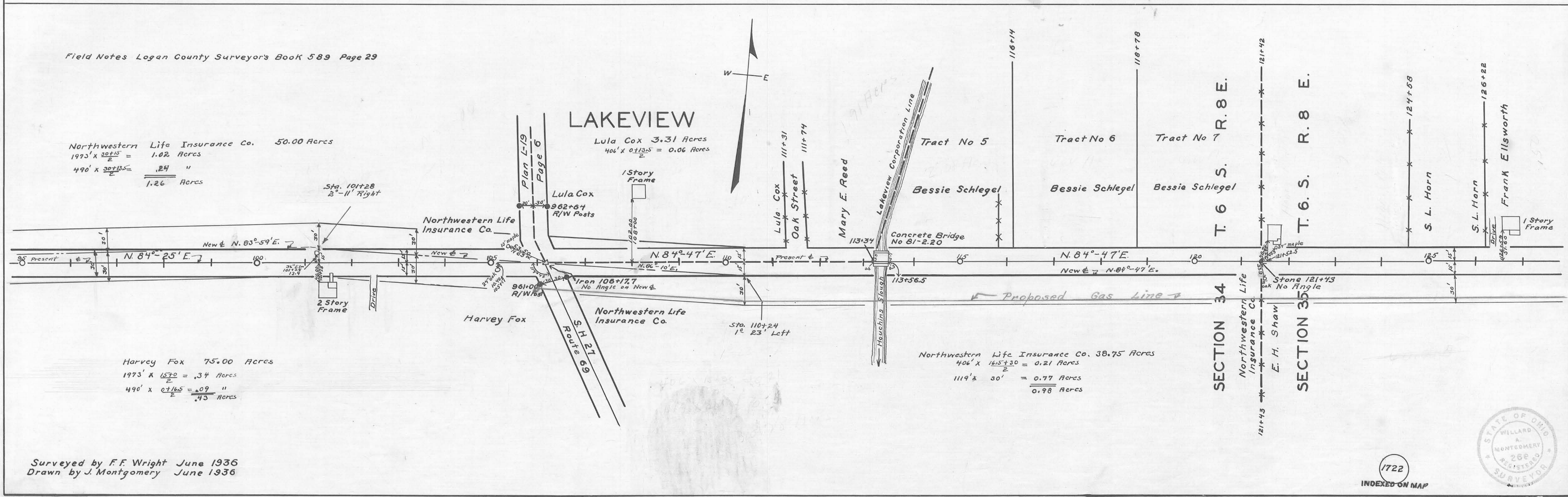
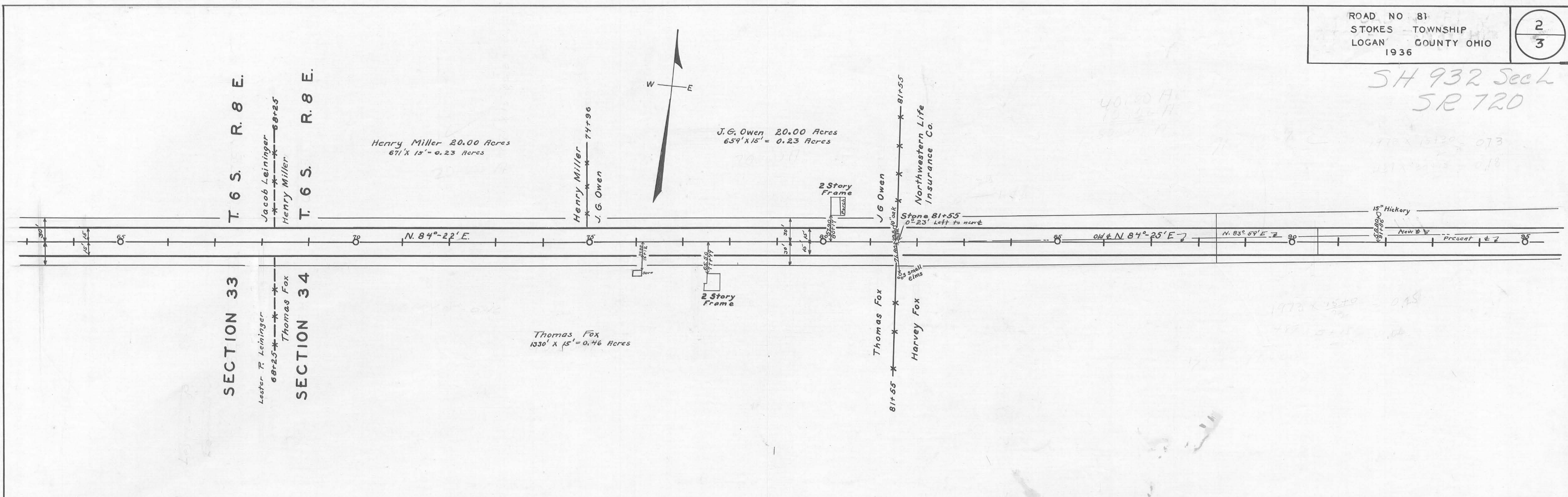


Surveyed by F.F. Wright June 1936
Drawn by J. Montgomery June 1936

1722
INDEXED ON MAP

X 81

SH 932 Sec 4
 SR 720

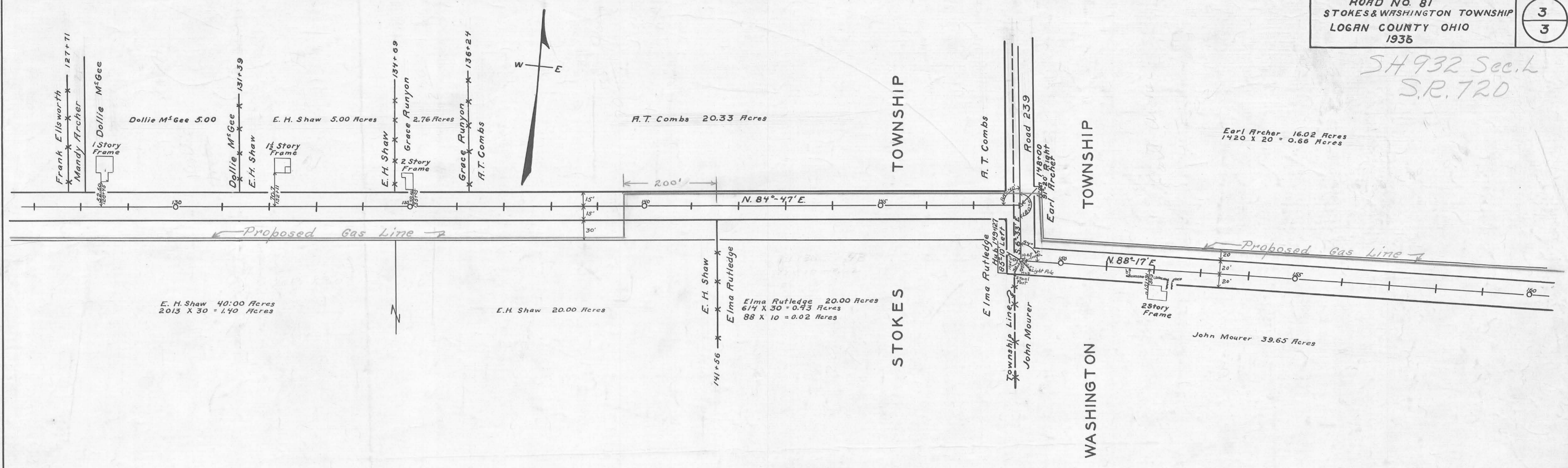


Surveyed by F.F. Wright June 1936
 Drawn by J. Montgomery June 1936

1722
 INDEXED ON MAP



SH 932 Sec. 1
S.R. 720

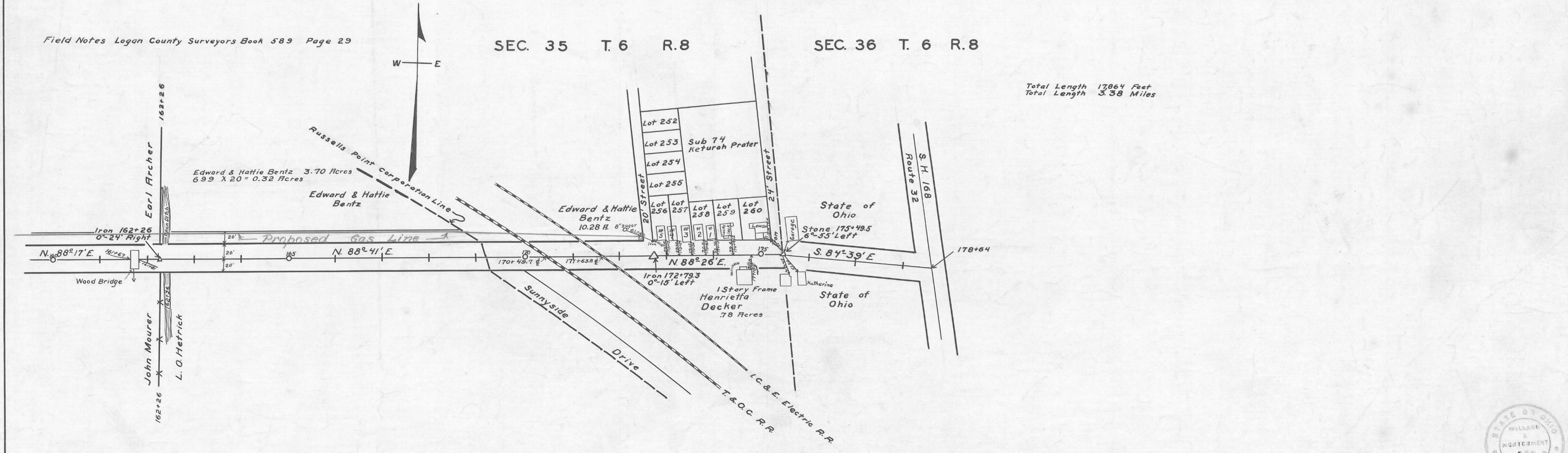


Field Notes Logan County Surveyors Book 589 Page 29

SEC. 35 T. 6 R. 8

SEC. 36 T. 6 R. 8

Total Length 17864 Feet
Total Length 3.38 Miles



Surveyed by F. F. Wright
Drawn by J. Montgomery

1722
INDEXED ON MAP

