

STATE OF OHIO DEPARTMENT OF TRANSPORTATION

LOG~T.R.143~0.00
UNI~C.R.253~0.00/C.R.179~0.00

PERRY TOWNSHIP
LOGAN COUNTY
LIBERTY TOWNSHIP
UNION COUNTY

LOGAN COUNTY LOG~T.R.143~0.00	07770(0)	OHIO	
UNION COUNTY UNI~C.R.253~0.00/C.R.179~0.00		FHWA REGION	5

NOTE: LOG~T.R.143~0.00 APPEARING THROUGH OUT THIS PLAN SHALL BE CONSIDERED TO READ LOG~T.R.143~0.00, UNI~C.R.253~0.00/C.R.~179~0.00

RIGHT-OF-WAY ONLY

100% STATE

1989 SPECIFICATIONS

The standard specifications of the State of Ohio, Department of Transportation, including changes and supplemental specifications listed in the proposal shall govern this improvement.

I hereby approve these plans and declare that the making of this improvement will require the closing to traffic of the highway and that provisions for the maintenance and safety of traffic will be as set forth on the plans and estimates.

ACQUIRING AGENCY: STATE OF OHIO

Approved _____
Date _____ District Deputy Director of Transportation

Approved _____
Date _____ Assistant Deputy Director, Real Estate

Approved _____
Date _____ Engineer, Bureau of Bridges and Structural Design

Approved _____
Date _____ Chief Engineer, Planning & Design

Approved _____
Date _____ Director, Department of Transportation

CONVENTIONAL SIGNS

County Line ————	Limited Access (only) ———— LA
Township Line ————	Right of Way (only) ———— RW
Section Line ————	Limited Access & Right of Way — LA&RW
Corporation Line ———— or ————	Existing Right of Way ————
Fence Line (existing) — x — (proposed) — x —	Property Line — (in existing fence) — x —
Center Line ————	Railroad ———— or ————
Trees (to be removed) — (to be removed) —	Guardrail (existing) — o — o — (proposed) — o — o —
Utility Poles: Telephone φ, Power φ, Light φ	

INDEX OF SHEETS

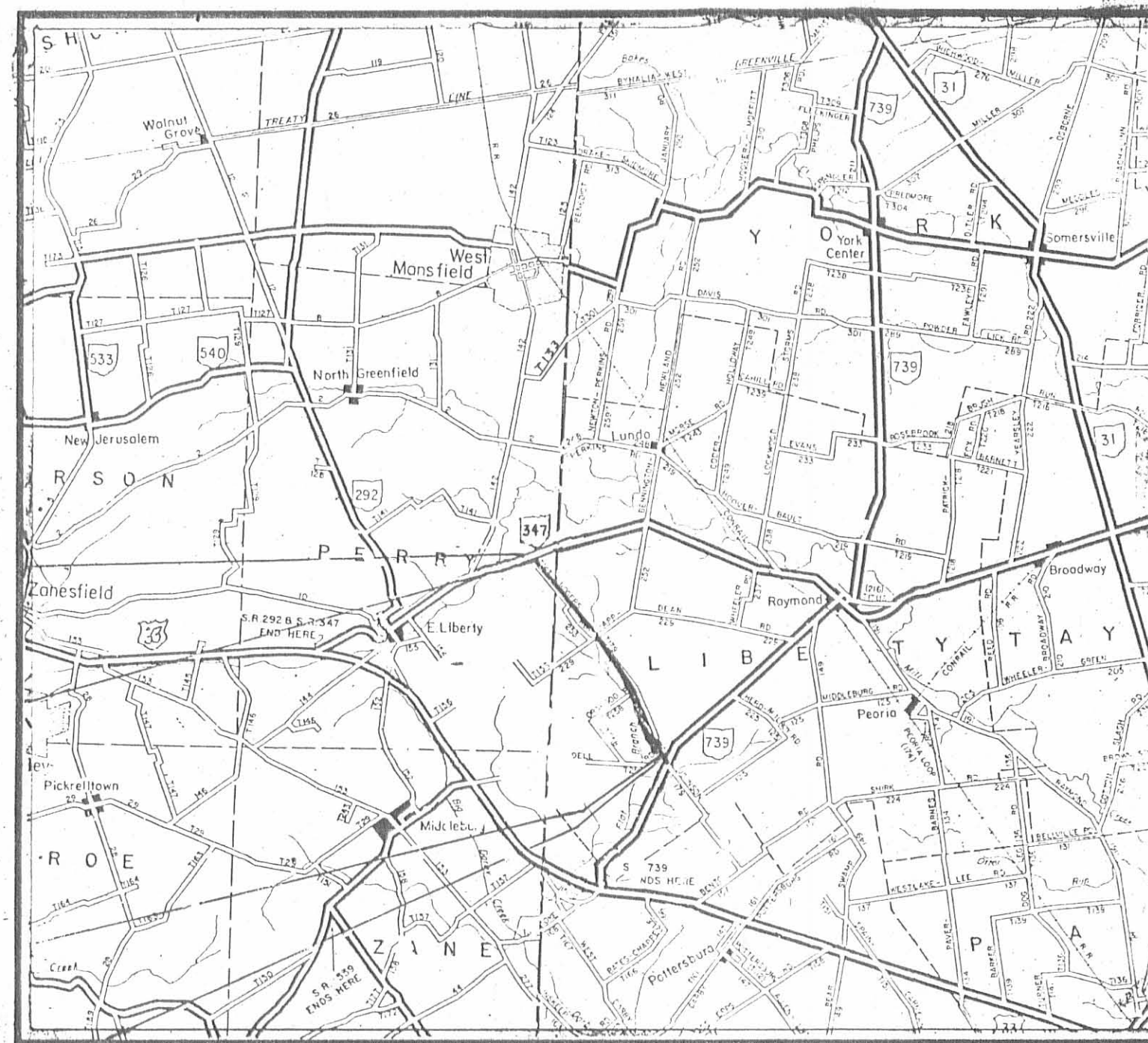
Title Sheet	1 THRU 4
Centerline Plat	5 AND 6
Property Map	7
Summary of Additional Right-Of-Way	8 THRU 16
Right-Of-Way Plan Sheets	

BEGIN WORK
STA. 68+93.88

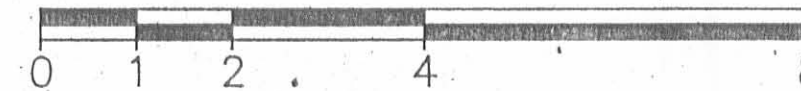
BEGIN PROJECT
STA. 69+17.77

END PROJECT
STA. 254+70.15

END WORK
STA. 255+00.00

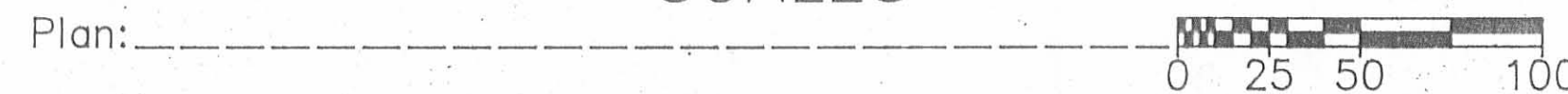


LOCATION MAP
SCALE IN MILES



Portion to be Improved	
State & Federal Routes	
Other Roads	

SCALES



Project: LOG~T.R.143~0.00
UNI~C.R.253~0.00/C.R.179~0.00
Date of Letting _____ 19__ Contract No. _____

Plan Prepared By:
DISTRICT NO. 7
OHIO DEPARTMENT OF
TRANSPORTATION

CENTERLINE PLAT UNION COUNTY LIBERTY TOWNSHIP

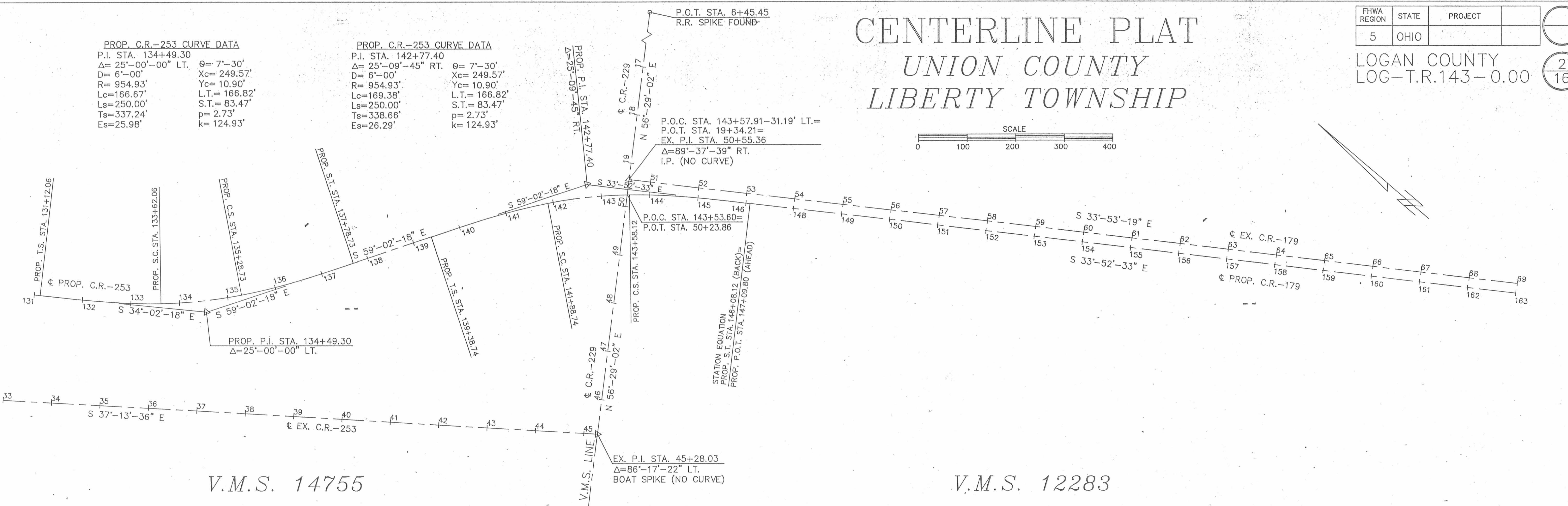
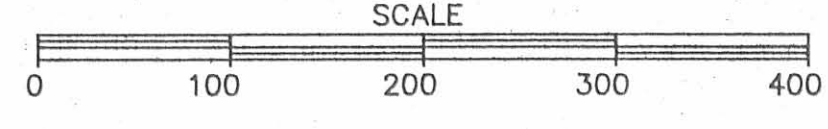
FHWA REGION	STATE	PROJECT	
5	OHIO		

LOGAN COUNTY	LOG-T.R.143-0.00	
		2 16

PROP. C.R.-253 CURVE DATA
 P.I. STA. 134+49.30
 $\Delta = 25^{\circ}-00'-00''$ LT.
 $\theta = 7^{\circ}-30'$
 $D = 6^{\circ}-00'$
 $R = 954.93'$
 $Lc = 166.67'$
 $Ls = 250.00'$
 $Ts = 337.24'$
 $Es = 25.98'$
 $Xc = 249.57'$
 $Yc = 10.90'$
 $L.T. = 166.82'$
 $S.T. = 83.47'$
 $p = 2.73'$
 $k = 124.93'$

PROP. C.R.-253 CURVE DATA
 P.I. STA. 142+77.40
 $\Delta = 25^{\circ}-09'-45''$ RT.
 $\theta = 7^{\circ}-30'$
 $D = 6^{\circ}-00'$
 $R = 954.93'$
 $Lc = 169.38'$
 $Ls = 250.00'$
 $Ts = 338.66'$
 $Es = 26.29'$
 $Xc = 249.57'$
 $Yc = 10.90'$
 $L.T. = 166.82'$
 $S.T. = 83.47'$
 $p = 2.73'$
 $k = 124.93'$

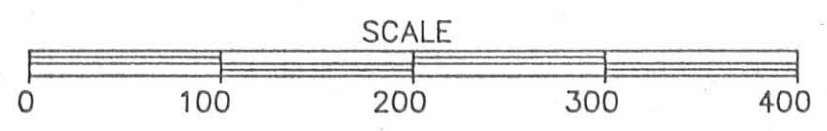
P.O.C. STA. 143+57.91-31.19' LT.=
 P.O.T. STA. 19+34.21=
 EX. P.I. STA. 50+55.36
 $\Delta = 89^{\circ}-37'-39''$ RT.
 I.P. (NO CURVE)



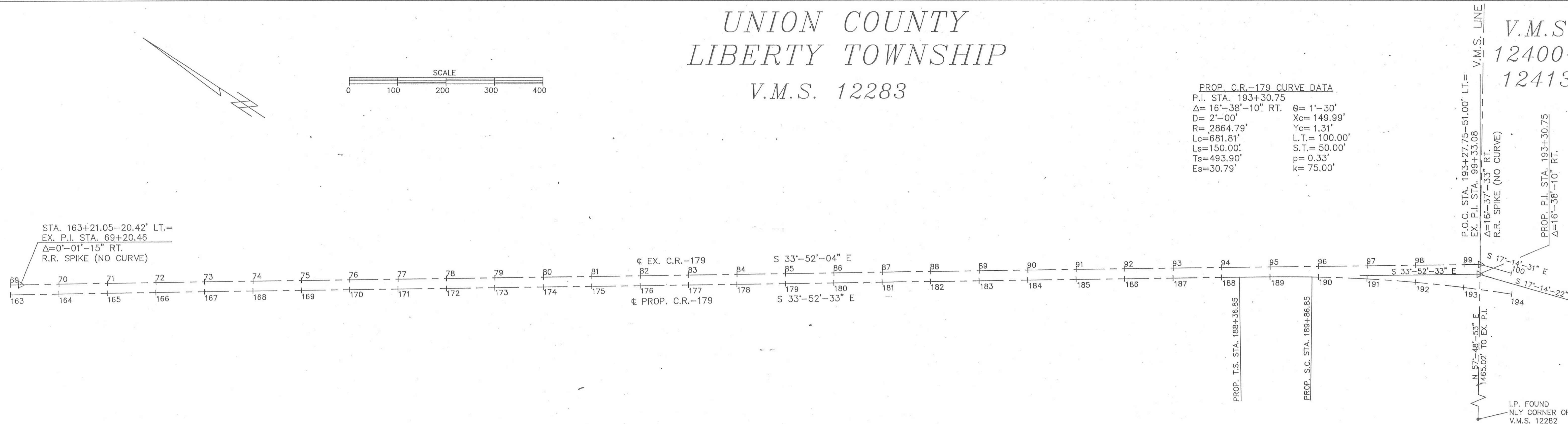
V.M.S. 14755

V.M.S. 12283

UNION COUNTY LIBERTY TOWNSHIP V.M.S. 12283



PROP. C.R.-179 CURVE DATA
 P.I. STA. 193+30.75
 $\Delta = 16^{\circ}-38'-10''$ RT.
 $\theta = 1^{\circ}-30'$
 $D = 2^{\circ}-00'$
 $R = 2864.79'$
 $Lc = 681.81'$
 $Ls = 150.00'$
 $Ts = 493.90'$
 $Es = 30.79'$
 $Xc = 149.99'$
 $Yc = 1.31'$
 $L.T. = 100.00'$
 $S.T. = 50.00'$
 $p = 0.33'$
 $k = 75.00'$



V.M.S. 12400-12413

RECORDED	I hereby certify that this plat is a true delineation of a survey made by the Ohio Department of Transportation in DATE <i>Richard R. Helmlinger</i> Richard R. Helmlinger - Registered Surveyor #5421	RECORDED
UNION COUNTY		COUNTY COUNTY
Date: _____		Date: _____
Vol. : _____		Vol. : _____
Page: _____		Page: _____

CENTERLINE PLAT

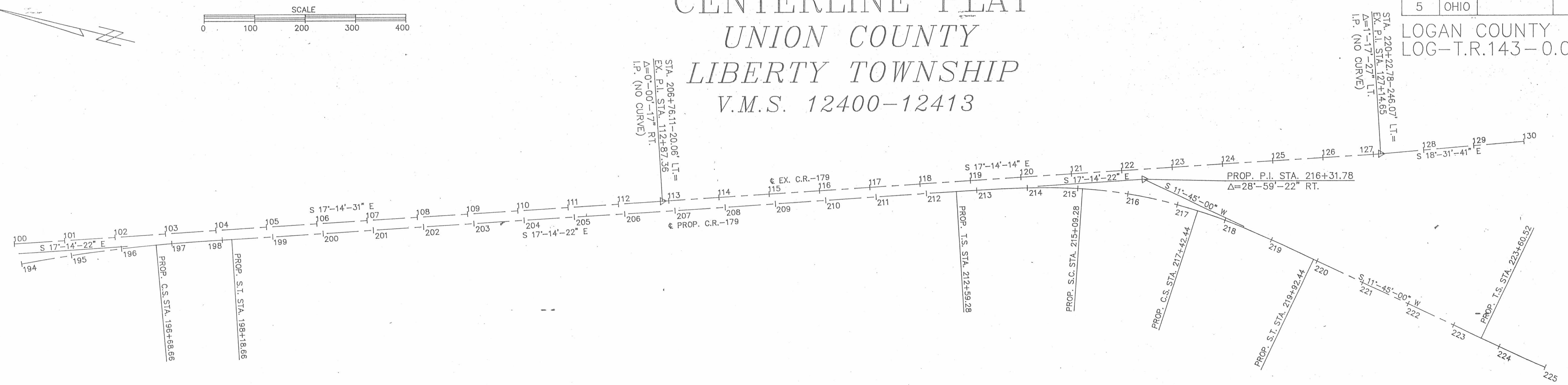
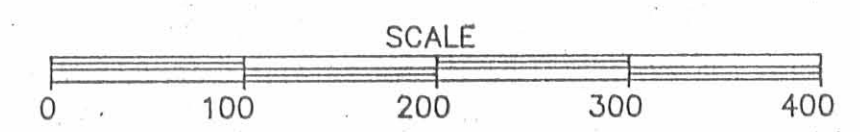
UNION COUNTY

LIBERTY TOWNSHIP

V.M.S. 12400-12413

FHWA REGION	STATE	PROJECT			
5	OHIO			3	16

LOGAN COUNTY
LOG-T.R.143-0.00



PROP. C.R.-179 CURVE DATA

P.I. STA. 193+30.75	θ = 1°-30'
Δ = 16°-38'-10" RT.	Xc = 149.99'
D = 2'-00'	Yc = 1.31'
R = 2864.79'	L.T. = 100.00'
Lc = 681.81'	S.T. = 50.00'
Ls = 150.00'	p = 0.33'
Ts = 493.90'	k = 75.00'
Es = 30.79'	

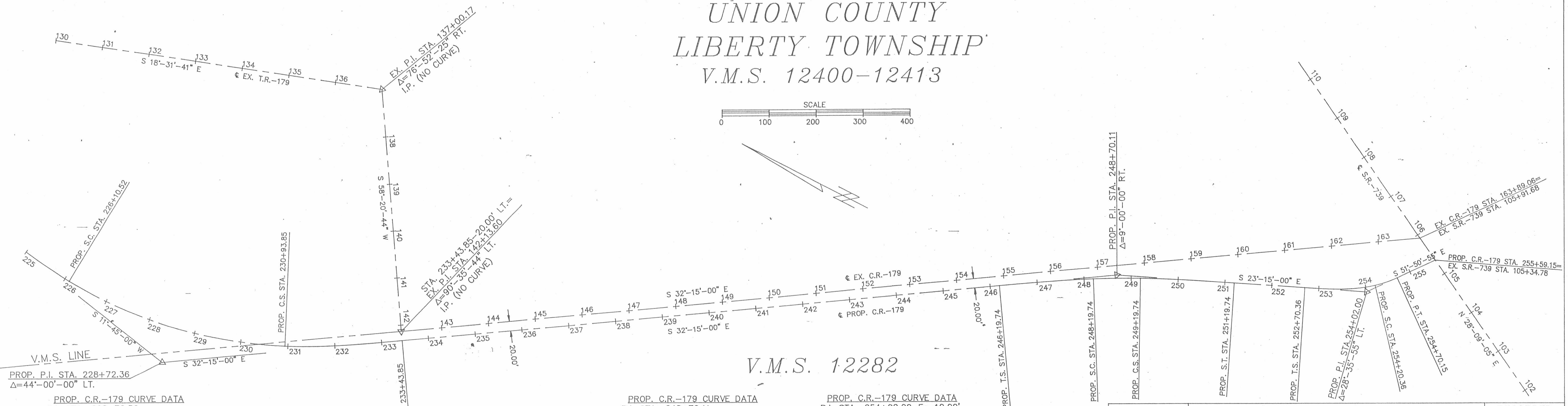
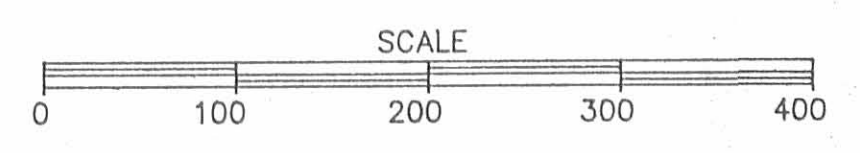
PROP. C.R.-179 CURVE DATA

P.I. STA. 216+31.78	θ = 7°-30'
Δ = 28°-59'-22" RT.	Xc = 249.57'
D = 6'-00'	Yc = 10.90'
R = 954.93'	L.T. = 166.82'
Lc = 233.16'	S.T. = 83.47'
Ls = 250.00'	p = 2.73'
Ts = 372.50'	k = 124.93'
Es = 34.21'	

UNION COUNTY

LIBERTY TOWNSHIP

V.M.S. 12282



PROP. C.R.-179 CURVE DATA

P.I. STA. 228+72.36	θ = 7°-30'
Δ = 44°-00'-00" LT.	Xc = 249.57'
D = 6'-00'	Yc = 10.90'
R = 954.93'	L.T. = 166.82'
Lc = 483.33'	S.T. = 83.47'
Ls = 250.00'	p = 2.73'
Ts = 511.85'	k = 124.93'
Es = 77.94'	

PROP. C.R.-179 CURVE DATA

P.I. STA. 248+70.11	θ = 3°-00'
Δ = 9°-00'-00" RT.	Xc = 199.95'
D = 3'-00'	Yc = 3.49'
R = 1909.86'	L.T. = 133.35'
Lc = 100.00'	S.T. = 66.68'
Ls = 200.00'	p = 0.87'
Ts = 250.37'	k = 99.99'
Es = 6.78'	

PROP. C.R.-179 CURVE DATA

P.I. STA. 254+02.00	Es = 10.00'
Δ = 28°-35'-55" LT.	θ = 17°-11'-19"
D = 22°-55'-06"	Xc = 148.66'
R = 250.00'	Yc = 14.90'
Lc = 49.79'	L.T. = 100.48'
Ls = 150.00' (BACK)	S.T. = 50.43'
Ts = 131.64" (BACK)	p = 3.74'
Ts = 71.53' (AHEAD)	k = 74.78'

RECORDED	I hereby certify that this plat is a true delineation of a survey made by the Ohio Department of Transportation in DATE <i>Richard R. Helmlinger</i> Richard R. Helmlinger - Registered Surveyor #5421	RECORDED
UNION COUNTY		COUNTY COUNTY
Date: _____ Vol. : _____ Page: _____		Date: _____ Vol. : _____ Page: _____

CENTERLINE PLAT

LOGAN & UNION COUNTIES

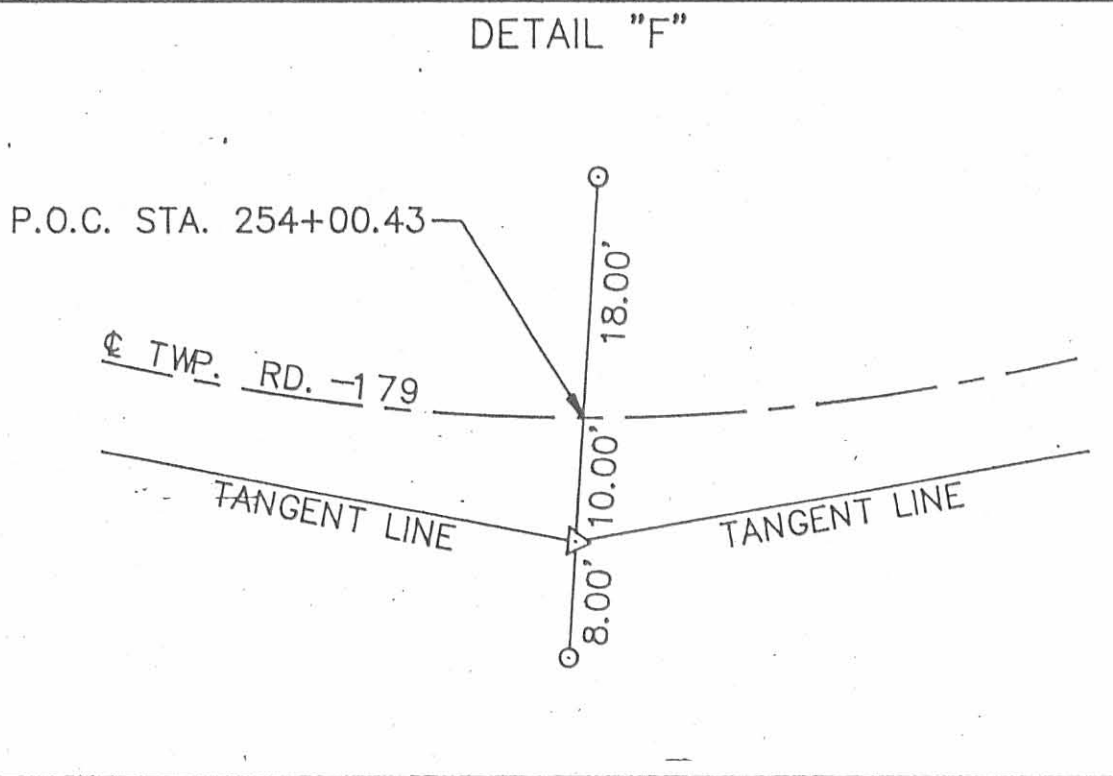
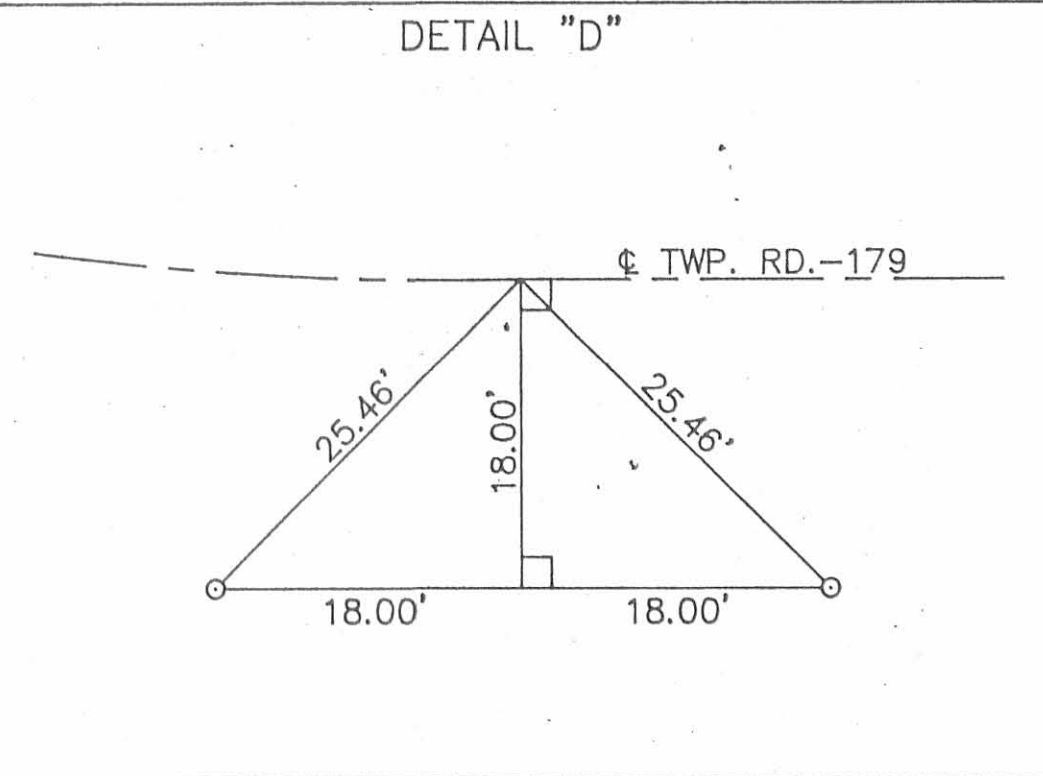
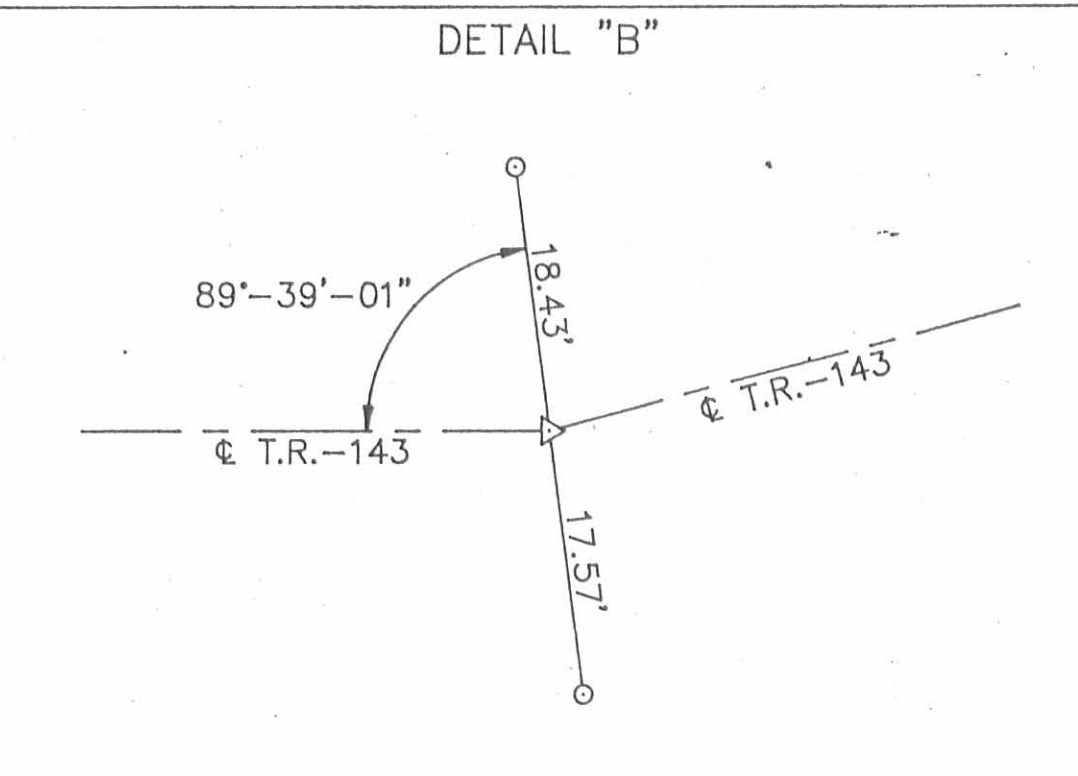
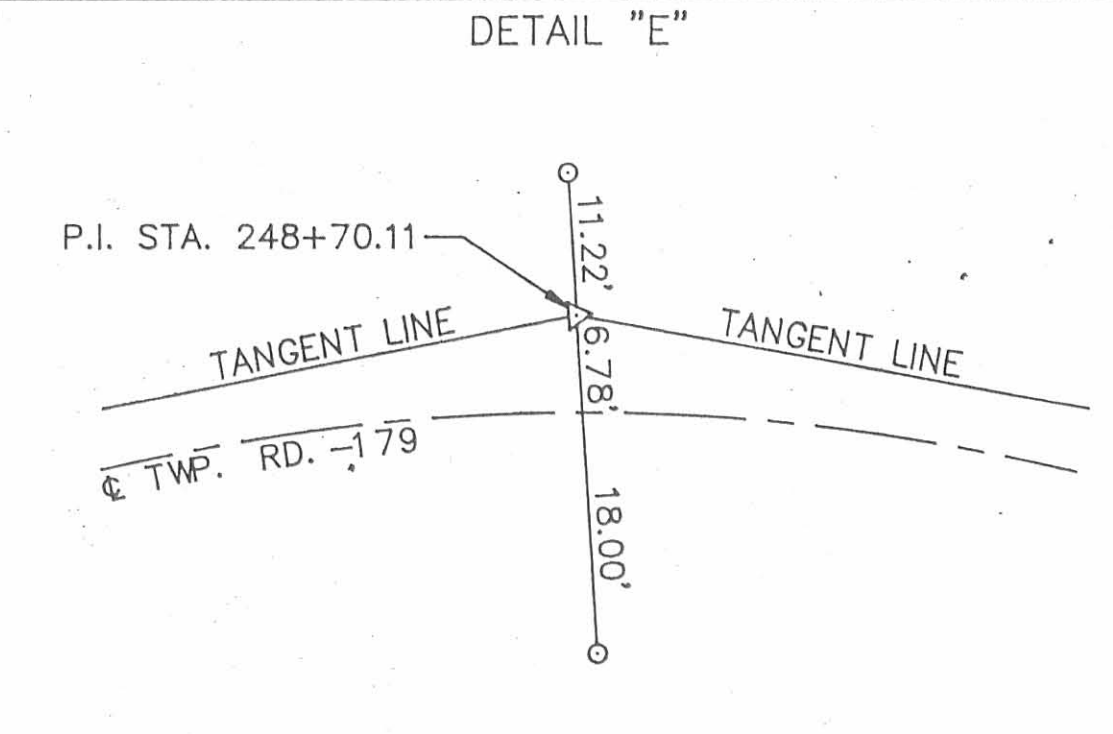
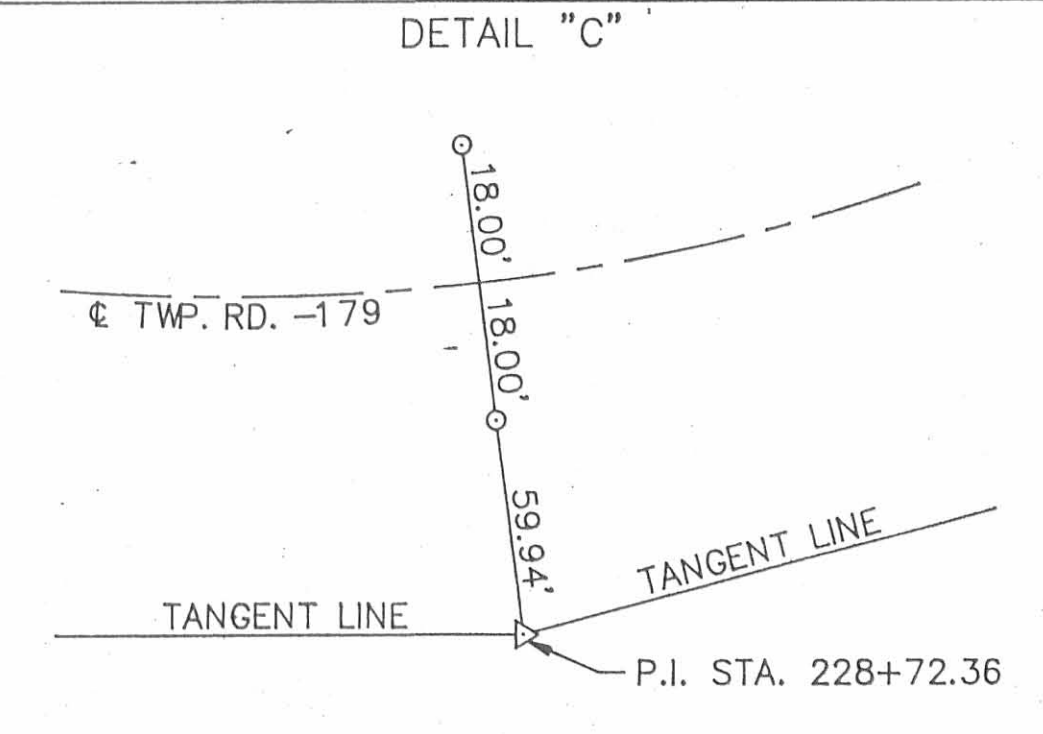
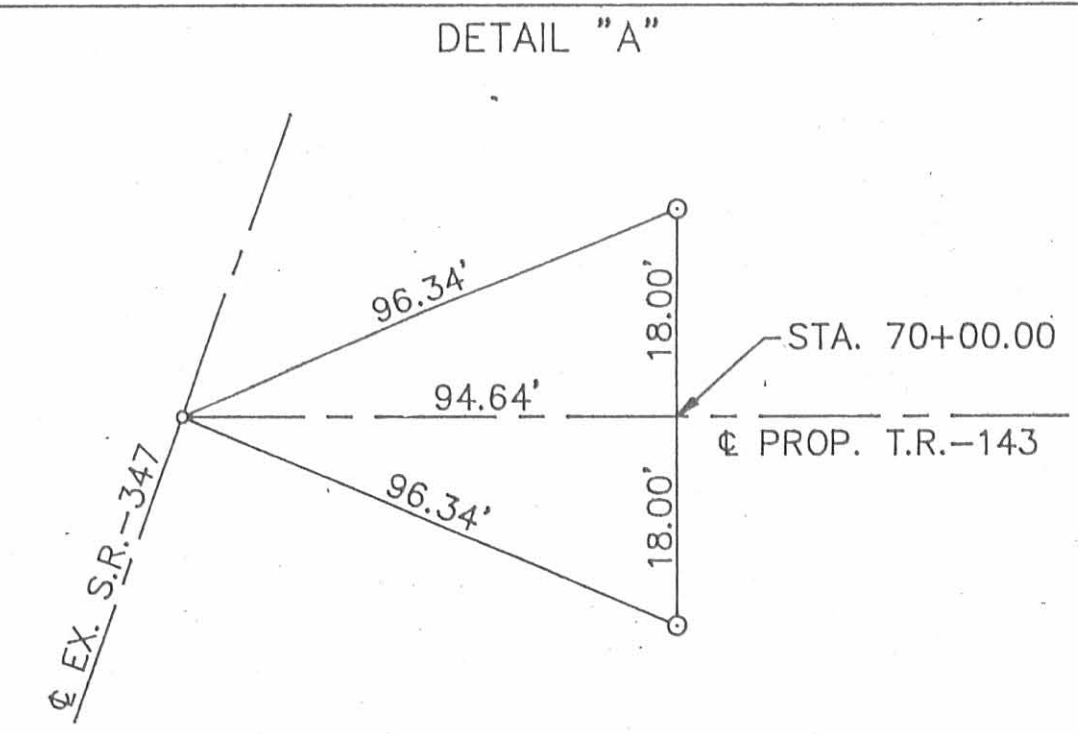
PERRY & LIBERTY TOWNSHIPS

FHWA REGION	STATE	PROJECT	
5	OHIO		LOGAN COUNTY LOG-T.R.143-0.00

4
16

THE SETTING OF MONUMENTS SHALL BE PERFORMED UNDER THE DIRECT SUPERVISION OF A REGISTERED PROFESSIONAL SURVEYOR. ALL MONUMENTS WHICH ARE SET, WHICH DIFFER FROM THOSE SHOWN ON THE CENTERLINE SURVEY PLAT, SHALL BE RECORDED BY FILING AN AMENDED PLAT OR BY AN AFFIDAVIT LISTING THE CHANGES.

☉ REFERENCE MONUMENTS TO BE SET BY CONTRACTOR			
See Standard Construction Drawing MC-1			
☉ REFERENCE MONUMENTS	LEFT	RIGHT	TYPICAL DETAIL FOR LOCATION OF ☉ REFERENCE MONUMENTS
☉ LOGAN CO. TWP. RD. 143			<p style="font-size: small;">MONUMENT NORMAL TO CURVE OR 90° TO ☉</p> <p style="font-size: small;">STATION</p> <p style="font-size: small;">MONUMENT</p> <p style="font-size: small;">DIST.</p> <p style="font-size: small;">☉ SURVEY</p>
P.O.T. STA. 69+05.36		SEE DETAIL "A"	
P.O.T. STA. 75+00.00	18.00'	18.00'	
P.O.T. STA. 80+00.00	18.00'	18.00'	
P.I. STA. 87+77.26		SEE DETAIL "B"	
P.O.T. STA. 95+00.00	18.00'	18.00'	
P.O.T. STA. 100+00.00	18.00'	18.00'	
☉ UNION CO. RD. 253			
P.O.T. STA. 105+00.00	18.00'	18.00'	
P.O.T. STA. 110+00.00	18.00'	18.00'	
P.O.T. STA. 115+00.00	18.00'	18.00'	
P.O.T. STA. 120+00.00	18.00'	18.00'	
P.O.T. STA. 125+10.00	18.00'	18.00'	
T.S. STA. 131+12.06	18.00'	18.00'	
P.I. STA. 134+49.30		SET ON P.I.	
T.S. STA. 139+38.74	18.00'	18.00'	
P.I. STA. 142+77.40		SET ON P.I.	
☉ UNION CO. TWP. RD. 179			
S.T. STA. 146+08.12	18.00'	18.00'	
P.O.T. STA. 155+50.00	18.00'	18.00'	
P.O.T. STA. 160+00.00	18.00'	18.00'	
P.O.T. STA. 165+00.00	18.00'	18.00'	
P.O.T. STA. 170+00.00	18.00'	18.00'	
P.O.T. STA. 175+00.00	18.00'	18.00'	
P.O.T. STA. 180+00.00	18.00'	18.00'	
T.S. STA. 188+36.85	18.00'	18.00'	
P.I. STA. 193+30.75 (IN DITCH)		SET ON P.I.	
S.T. STA. 198+18.66	18.00'	18.00'	
P.O.T. STA. 205+00.00	18.00'	18.00'	
T.S. STA. 212+59.28	18.00'	18.00'	
P.I. STA. 216+31.78 (IN DITCH)		SET ON P.I.	
S.T. STA. 219+92.44	18.00'	18.00'	
T.S. STA. 223+60.52	18.00'	18.00'	
M.P. STA. 228+52.18		SEE DETAIL "C"	
S.T. STA. 233+43.85		SEE DETAIL "D"	
P.O.T. STA. 240+00.00	18.00'	18.00'	
T.S. STA. 246+19.74	18.00'	18.00'	
M.P. STA. 248+69.74		SEE DETAIL "E"	
S.T. STA. 251+19.74	18.00'	18.00'	
T.S. STA. 252+70.36	18.00'	18.00'	
P.I. STA. 254+02.00		SEE DETAIL "F"	
P.T. STA. 254+70.15	18.00'	18.00'	



TOTAL OF 74 MONUMENTS TO BE SET.

RECORDED	I hereby certify that this plat is a true delineation of a survey made by the Ohio Department of Transportation in DATE	RECORDED
UNION COUNTY		COUNTY COUNTY
Date: _____	<p>Richard R. Helmlinger - Registered Surveyor #5421</p>	Date: _____
Vol. : _____		Vol. : _____
Page: _____		Page: _____