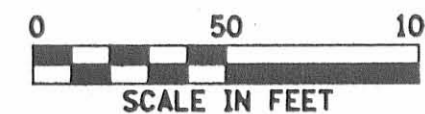
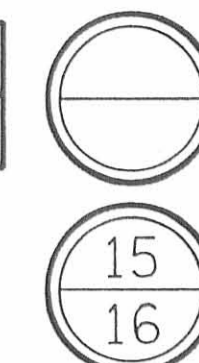


UNION COUNTY
LIBERTY TOWNSHIP
V.M.S. 12400 - 12413

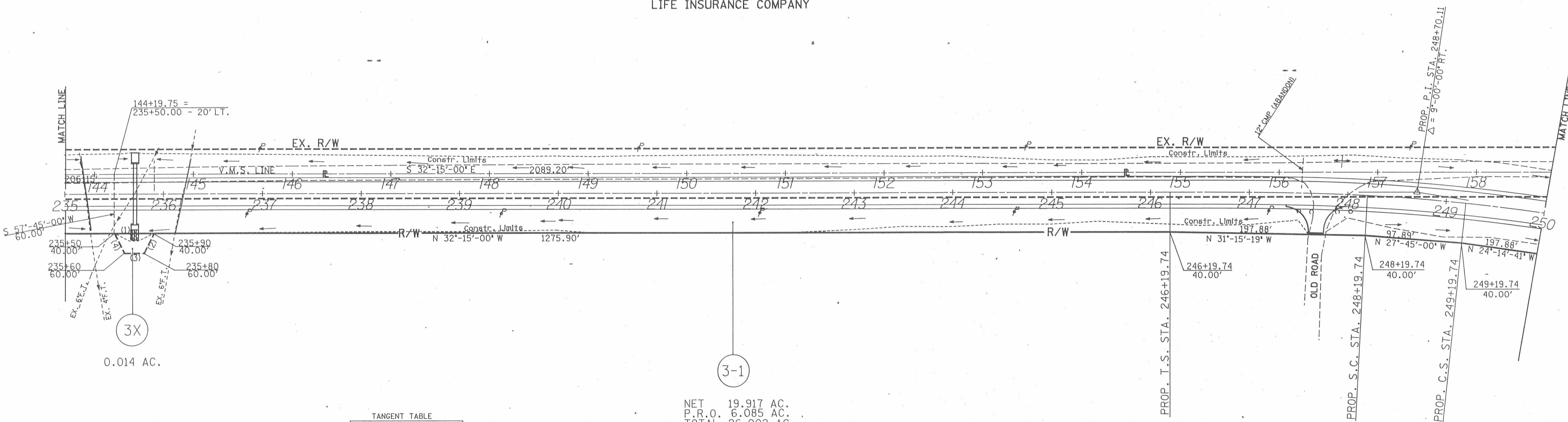


FHWA REGION	STATE	PROJECT
5	OHIO	

LOGAN COUNTY
LOG-T.R.143-0.00



THE LINCOLN NATIONAL
LIFE INSURANCE COMPANY



TANGENT TABLE

NO.	BEARING	DIST.
1	S 32°-15'-00" E	40.00'
2	S 84°-18'-54" W	22.36'
3	N 32°-15'-00" W	20.00'
4	N 31°-11'-06" E	22.36'

PROP. C.R.179 CURVE DATA
P.I. STA. 228+72.36
Δ = 44°-00'-00" LT. θ = 7°-30'
D = 6'-00' Xc = 249.57'
R = 954.93' Yc = 10.90'
Lc = 483.33' L.T. = 166.82'
Ls = 250.00' S.T. = 83.47'
Ts = 511.85' p = 2.73'
Es = 77.94' k = 124.93'

PROP. C.R.179 CURVE DATA
P.I. STA. 248+70.11
Δ = 9°-00'-00" RT. θ = 3°-00'
D = 3'-00' Xc = 199.95'
R = 1909.86' Yc = 3.49'
Lc = 100.00' L.T. = 133.35'
Ls = 200.00' S.T. = 66.68'
Ts = 250.37' p = 0.87'
Es = 6.78' k = 99.99'

HONDA OF AMERICA MFG., INC.

V.M.S. 12282
LIBERTY TOWNSHIP

Date	Revision Description
Completion Date : 12/09/88	

UNION COUNTY
LIBERTY TOWNSHIP

V.M.S. 12400 - 12413

FHWA REGION	STATE	PROJECT
5	OHIO	

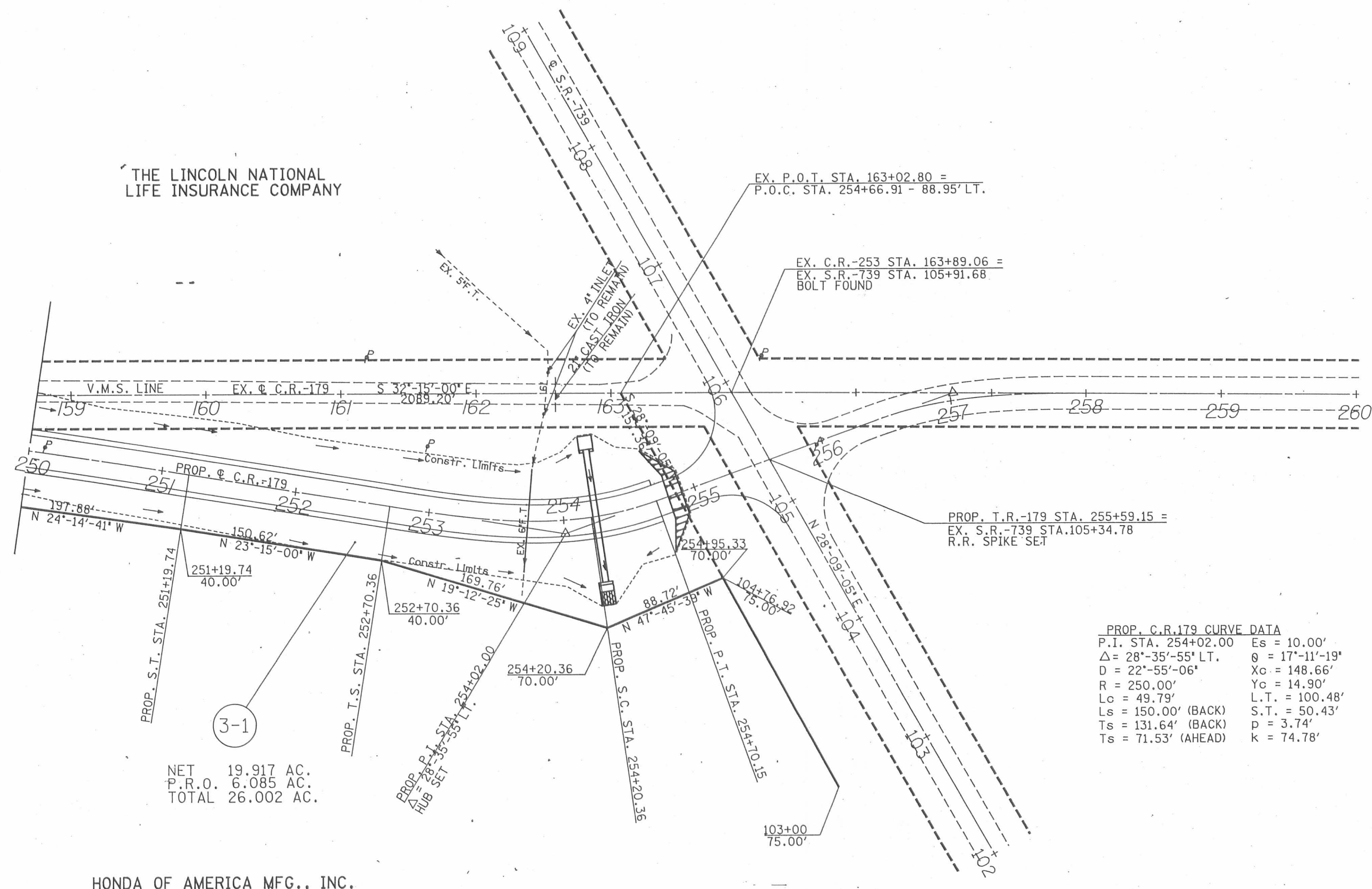


LOGAN COUNTY
LOG-T.R.143-0.00



0 50 100
SCALE IN FEET

8881 8 330



V.M.S. 12282
LIBERTY TOWNSHIP

Date	Revision Description
Completion Date : 12/09/88	