

We the undersigned, owners of the property described in the accompanying Plat, dedicate the same to public purposes, consistent therewith clear of all obstructions which interfere with the improvement and/or maintenance of the Highway at the time of improvement.

Office of the Logan County Commissioners
This Plat has been approved and accepted by us this 23 day of MAY 1937

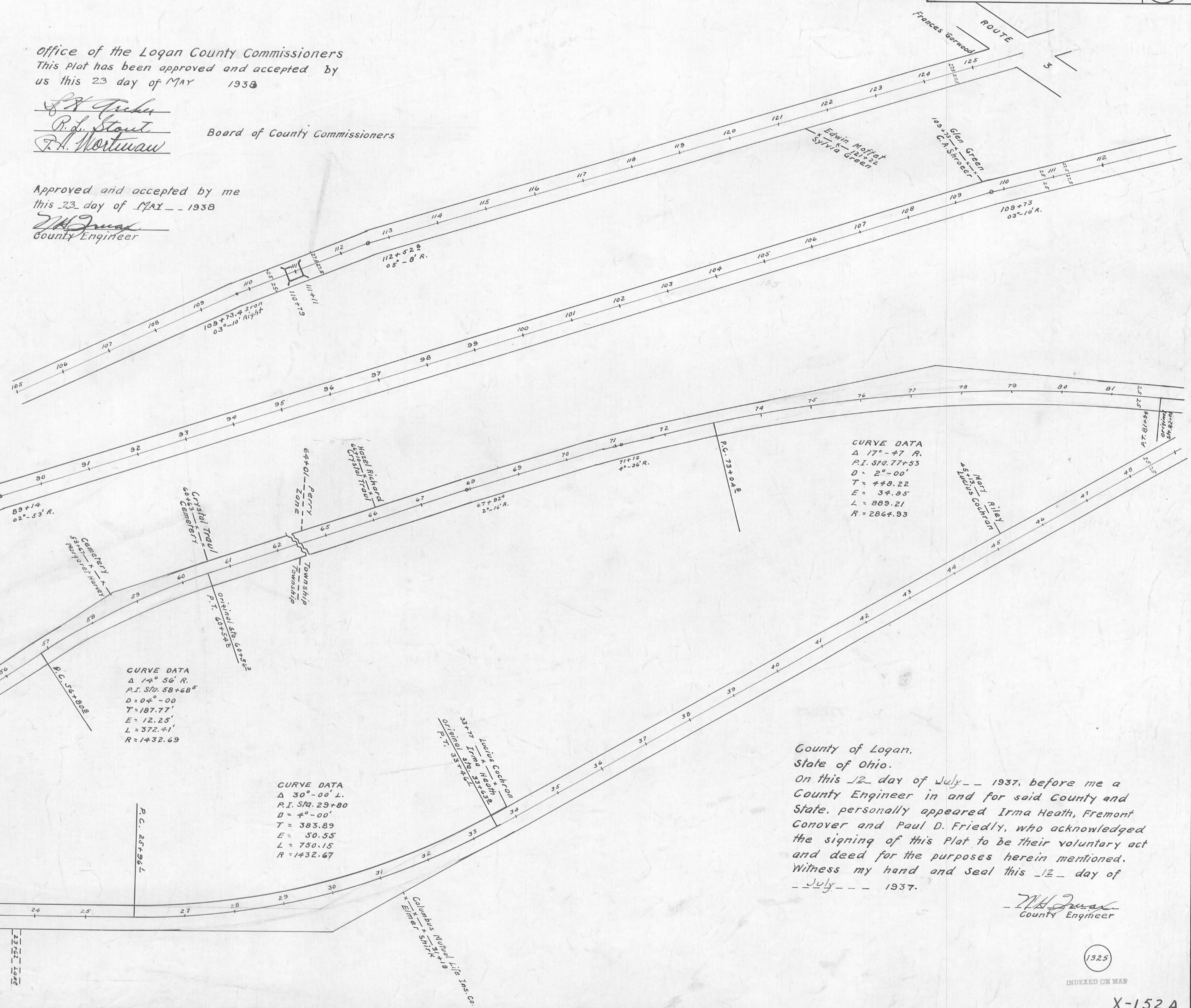
J. S. Crane
R. D. Stout
P. H. Mortman
Board of County Commissioners

Approved and accepted by me
this 23 day of MAY 1937
M. J. J. J.
County Engineer

OWNERS
1 *Irma Heath*
2 *Fremont Conover*
3 *Paul D. Friedly*

WITNESSES
H. F. Wright
J. S. Crane
Lain Montgomery
J. S. Crane
H. F. Wright
Chas. A. Inkef

Approved as to ownership, this 12 day of July 1937
J. S. Crane
Map Draftsman



CURVE DATA
Δ 17°-47' R.
P.I. Sta. 77+53
D = 2°-00'
T = 448.22
E = 34.85
L = 889.21
R = 2864.93

CURVE DATA
Δ 14° 56' R.
P.I. Sta. 58+68
D = 4°-00'
T = 187.77
E = 12.25
L = 372.41
R = 1432.69

CURVE DATA
Δ 30°-00' L.
P.I. Sta. 29+80
D = 4°-00'
T = 383.89
E = 50.55
L = 750.15
R = 1432.67

CURVE DATA
Δ 52°-25' L.
P.I. Sta. 17+00
D = 12°-00'
T = 235.46
E = 54.81
L = 437.61
R = 478.34

County of Logan,
State of Ohio.
On this 12 day of July 1937, before me a County Engineer in and for said County and State, personally appeared Irma Heath, Fremont Conover and Paul D. Friedly, who acknowledged the signing of this Plat to be their voluntary act and deed for the purposes herein mentioned. Witness my hand and seal this 12 day of July 1937.

M. J. J. J.
County Engineer

ROAD 152

X-152A