

References:
 Road Plan X-164
 F.B.710, pg. 37-40
 F.B.607, pg. 5-7
 F.B.492, pg. 68 & 69

- LEGEND:
- ▲ P.I. monument (specified in curve data)
 - Stone found
 - ⊙ Railroad spike found
 - 5/8" iron pin found (unless shown otherwise)
 - 3/4" iron pipe found (unless shown otherwise)
 - Pk. nail found
 - Magnetic nail found
 - Railroad spike set
 - Magnetic nail set

LOGAN COUNTY
 ENGINEER'S OFFICE

Logan County Engineer's Office
 Scott C. Coleman, P.E., P.S.
 1991 County Road 13, P.O. Box 427
 Bellefontaine, OH 43311
 Phone: (937) 592-2791
 Fax: (937) 599-2658
 Map Room (937) 599-7230

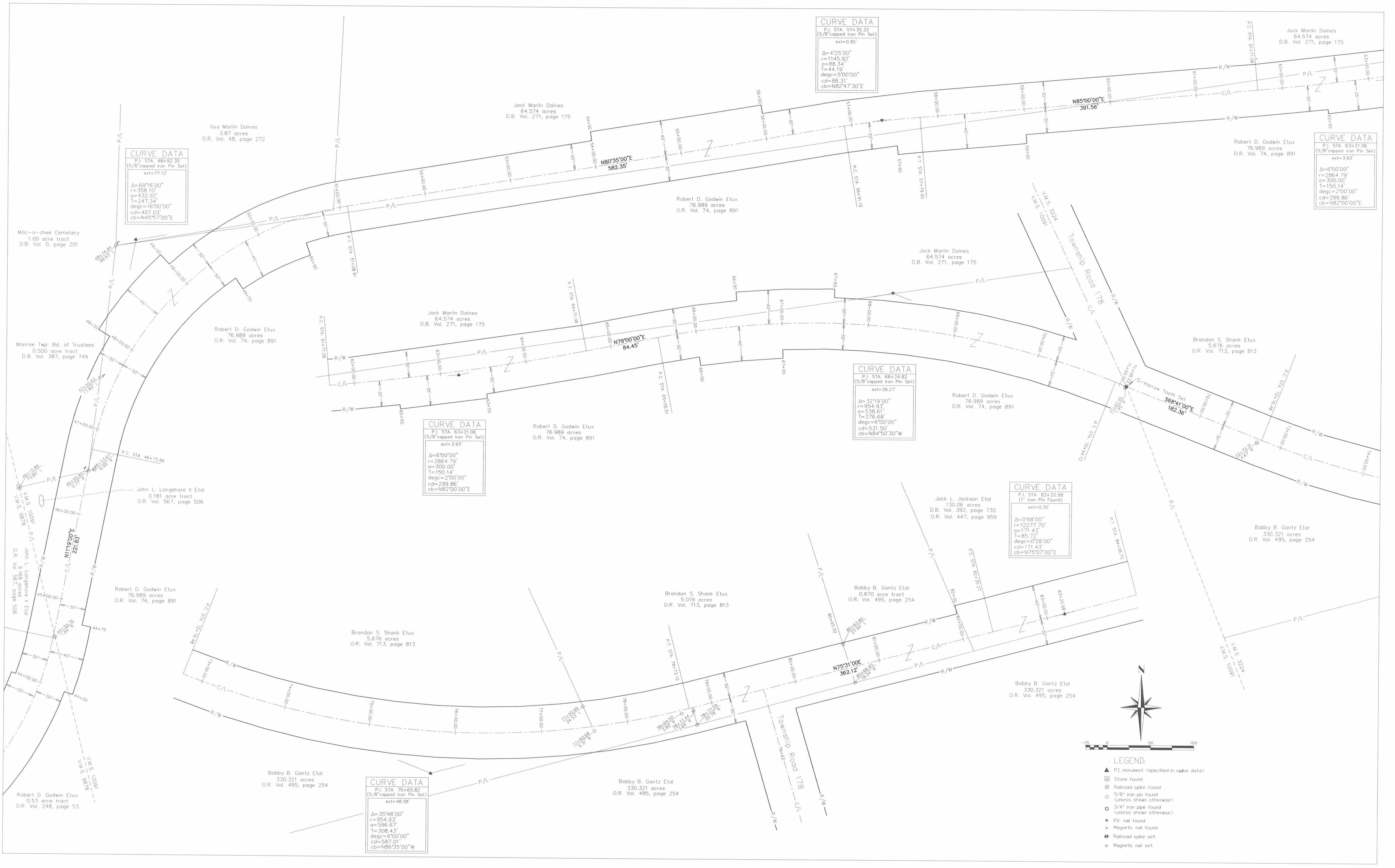
DATE :	9/07/2004	REVISIONS	DATE	BY
SCALE :	1" = 50'			
CHECKED BY:	CDD			
DRAFTED BY:	GTD			

RIGHT OF WAY PLAN FOR
 TOWNSHIP ROAD #164

WO.# 3225
 INDEX #

SHEET
 1
 2

X-164A



CURVE DATA
 P.I. STA. 48+92.35
 (5/8" capped Iron Pin Set)
 ext=77.12'
 Δ=69°16'00"
 r=358.10'
 q=432.92'
 T=247.34'
 degc=16°00'00"
 cd=407.03'
 cb=N45°57'00"E

CURVE DATA
 P.I. STA. 57+35.33
 (5/8" capped Iron Pin Set)
 ext=0.85'
 Δ=4°25'00"
 r=1145.92'
 q=88.34'
 T=44.19'
 degc=5°00'00"
 cd=88.31'
 cb=N82°47'30"E

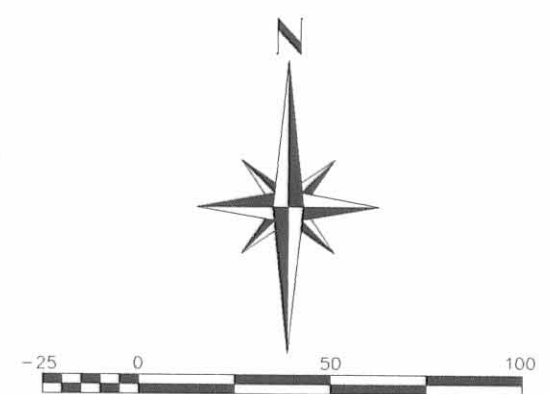
CURVE DATA
 P.I. STA. 63+21.06
 (5/8" capped Iron Pin Set)
 ext=3.93'
 Δ=6°00'00"
 r=2864.79'
 q=300.00'
 T=150.14'
 degc=2°00'00"
 cd=299.86'
 cb=N82°00'00"E

CURVE DATA
 P.I. STA. 63+21.06
 (5/8" capped Iron Pin Set)
 ext=3.93'
 Δ=6°00'00"
 r=2864.79'
 q=300.00'
 T=150.14'
 degc=2°00'00"
 cd=299.86'
 cb=N82°00'00"E

CURVE DATA
 P.I. STA. 68+24.82
 (5/8" capped Iron Pin Set)
 ext=39.27'
 Δ=32°19'00"
 r=954.93'
 q=538.61'
 T=276.68'
 degc=6°00'00"
 cd=531.50'
 cb=N84°50'30"W

CURVE DATA
 P.I. STA. 83+20.98
 (1" Iron Pin Found)
 ext=0.30'
 Δ=0°48'00"
 r=12277.70'
 q=171.43'
 T=85.72'
 degc=0°28'00"
 cd=171.43'
 cb=N75°07'00"E

CURVE DATA
 P.I. STA. 75+65.82
 (5/8" capped Iron Pin Set)
 ext=48.58'
 Δ=35°48'00"
 r=954.93'
 q=596.67'
 T=308.43'
 degc=6°00'00"
 cd=587.01'
 cb=N86°35'00"W



- LEGEND:**
- ▲ P.I. monument (specified in curve data)
 - ⊠ Stone found
 - ⊙ Railroad spike found
 - 5/8" iron pin found (unless shown otherwise)
 - 2/4" iron pipe found (unless shown otherwise)
 - P.K. nail found
 - Magnetic nail found
 - ⊙ Railroad spike set
 - Magnetic nail set

LOGAN COUNTY
 ENGINEER'S OFFICE
 Logan County Engineer's Office
 Scott C. Coleman, P.E., P.S.
 1991 County Road 13, P.O. Box 427
 Bellefontaine, OH 43311
 Phone: (937) 592-2791
 Fax: (937) 599-2658
 Map Room (937) 599-7230

DATE : 9/07/2004
 SCALE : 1" = 50'

REVISIONS	DATE	BY

CHECKED BY: CDD
 DRAFTED BY: GTD

RIGHT OF WAY PLAN FOR
 TOWNSHIP ROAD #164

WO.# 3225
 INDEX #
 SHEET 2/2

X-164A