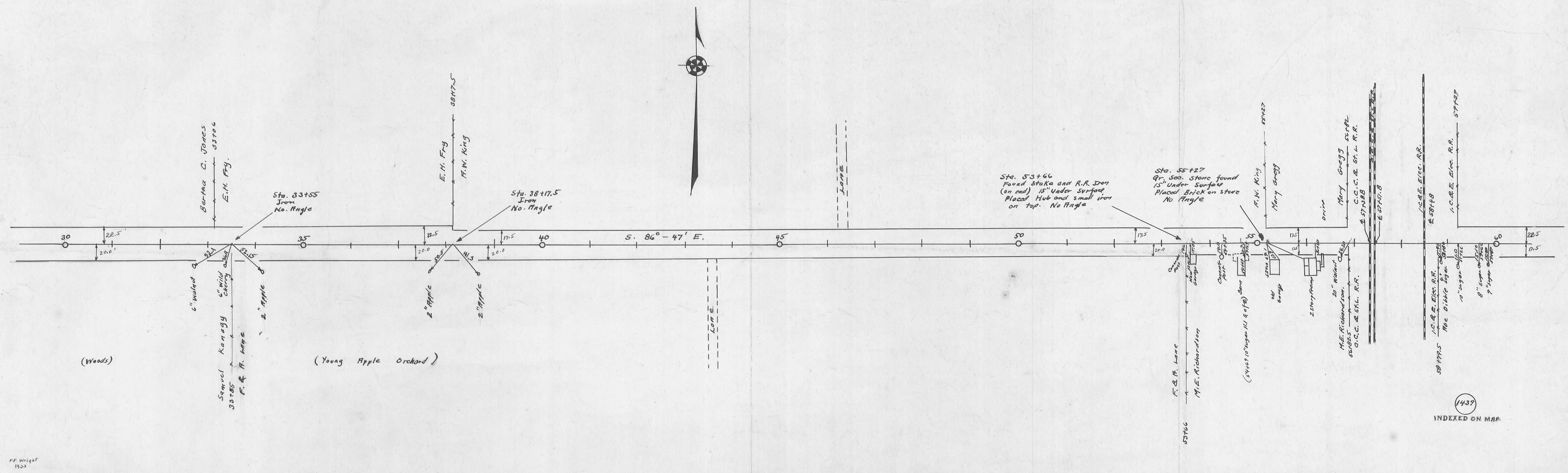
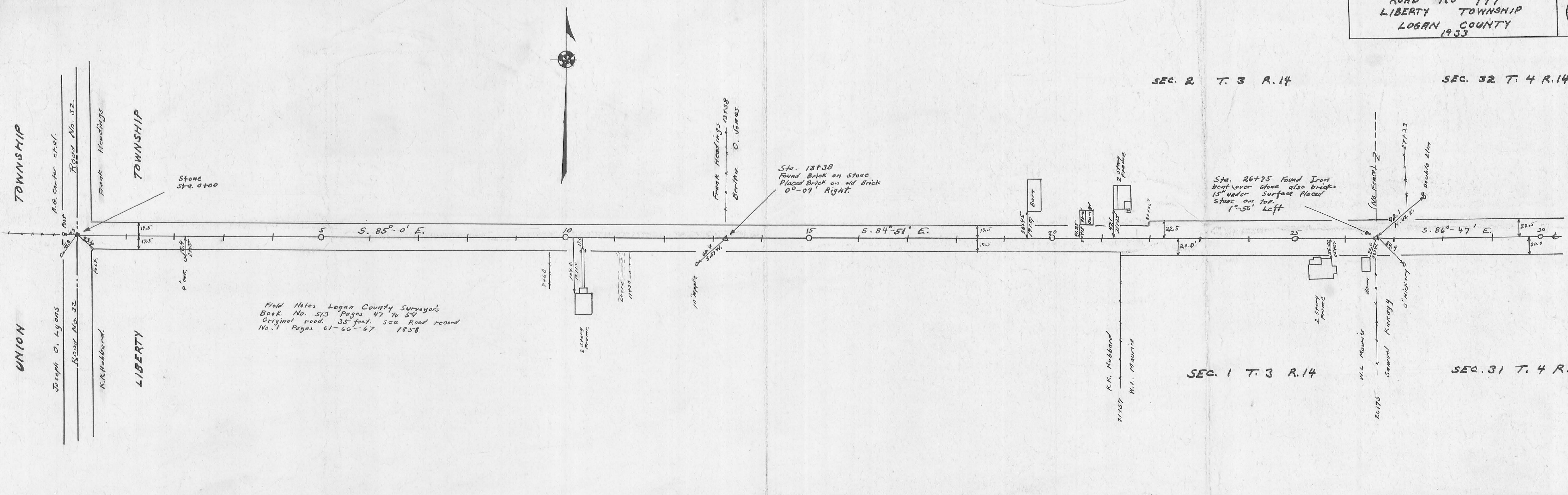


SEC. 2 T. 3 R. 14

SEC. 32 T. 4 R. 14

SEC. 1 T. 3 R. 14

SEC. 31 T. 4 R. 14



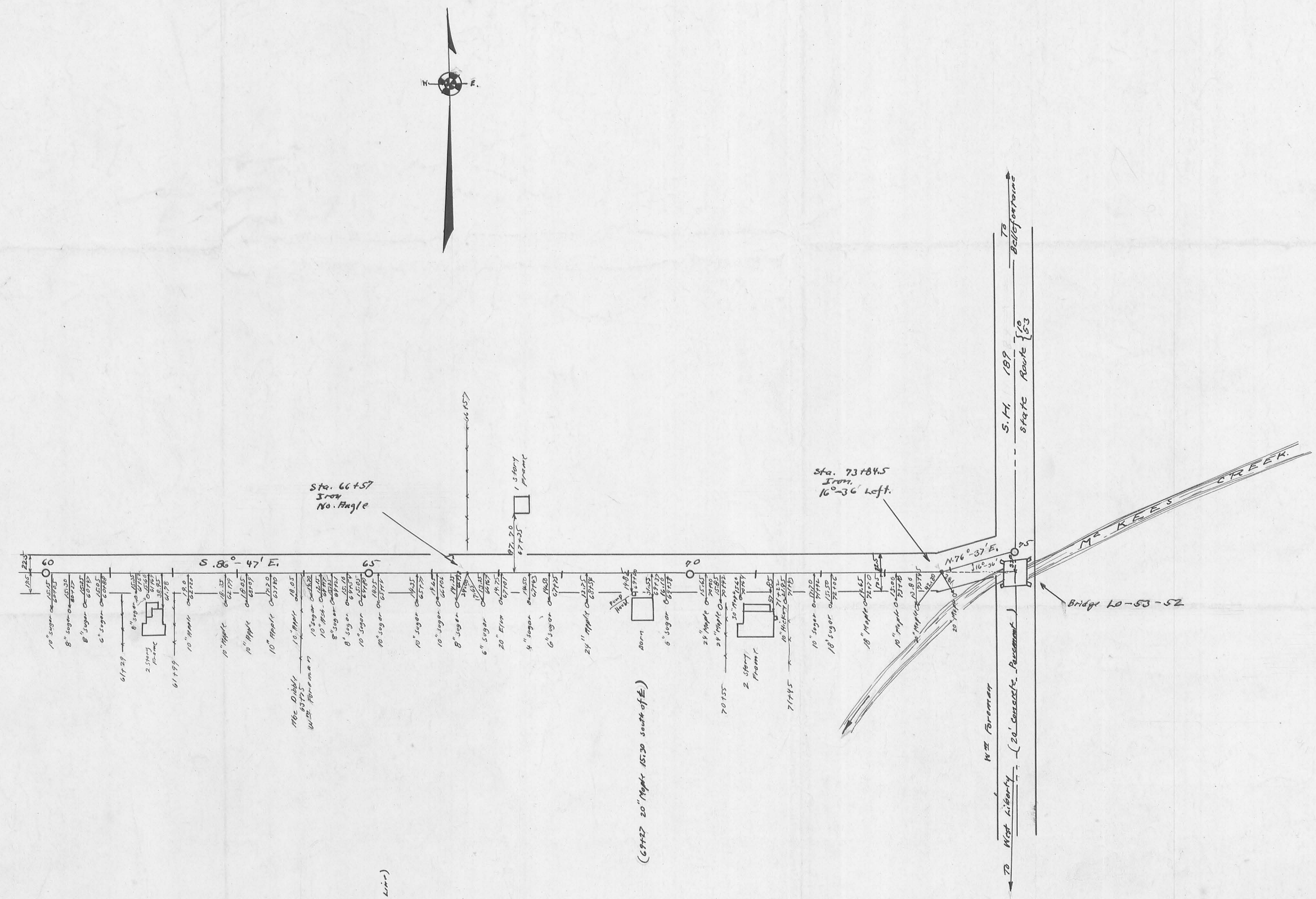
ROAD 199

661-X

X-199

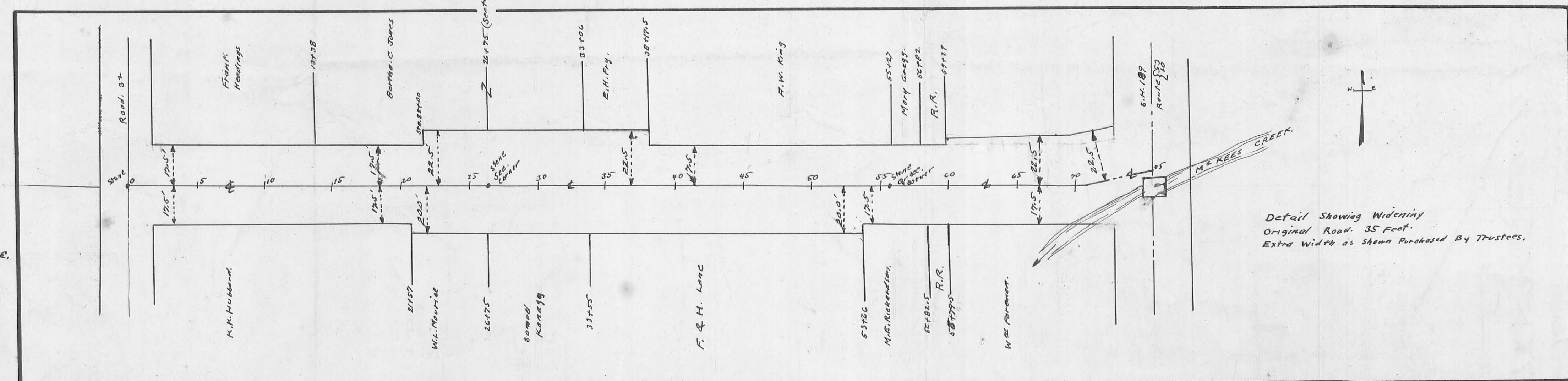
INDEXED ON MAP

Length 7500.00 Feet.
 Length 0.4204 Miles.



Note:-
 See Road Record No. 1 Page 68
 for description of Angle at Sta.
 73+84.5

Drawn By
 G. B. Wiggan, C.E.
 1933



Detail Showing Widening
 Original Road 35 Feet.
 Extra Width as Shown Purchased by Trustees.

INDEXED ON MAP.